

# HI-TACAN A

TACAN DHK Chan <b>36</b>	APCH CRS <b>144°</b>	Rwy ldg TDZE Arpt Elev <b>N/A</b> <b>N/A</b> <b>761</b>
-----------------------------	-------------------------	--

[USAF]

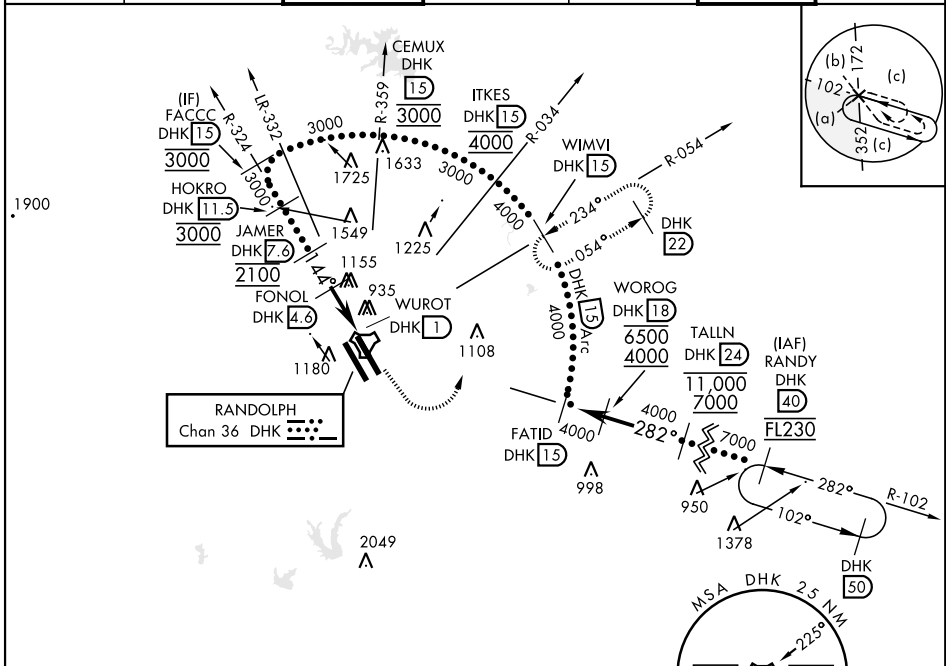
RANDOLPH AFB (KRND)

RADAR required for missed approach monitoring

\* Circling not authorized SW of Rwy 15L-33R.

MISSED APPROACH: Track heading 145° to 1500. Then climbing left turn heading 024° to 3000. Intercept DHK TACAN R-054 to WIMVI and hold.

ATIS ★ <b>290.525</b>	SAN ANTONIO APP CON <b>128.05 318.1</b>	TOWER ★ <b>128.25 294.7</b>	GND CON <b>119.65 275.8</b>	HANGOVER ATIS ★ <b>327.8</b>	HANGOVER TOWER ★ <b>120.5 291.1</b>	HANGOVER GND CON <b>124.75</b> <b>353.75</b>
--------------------------	---	--------------------------------	--------------------------------	------------------------------------	---	---



EMERG SAFE ALT 100 NM 4100

