

UNIVERSAL CITY, TEXAS

# ILS or LOC RWY 15R

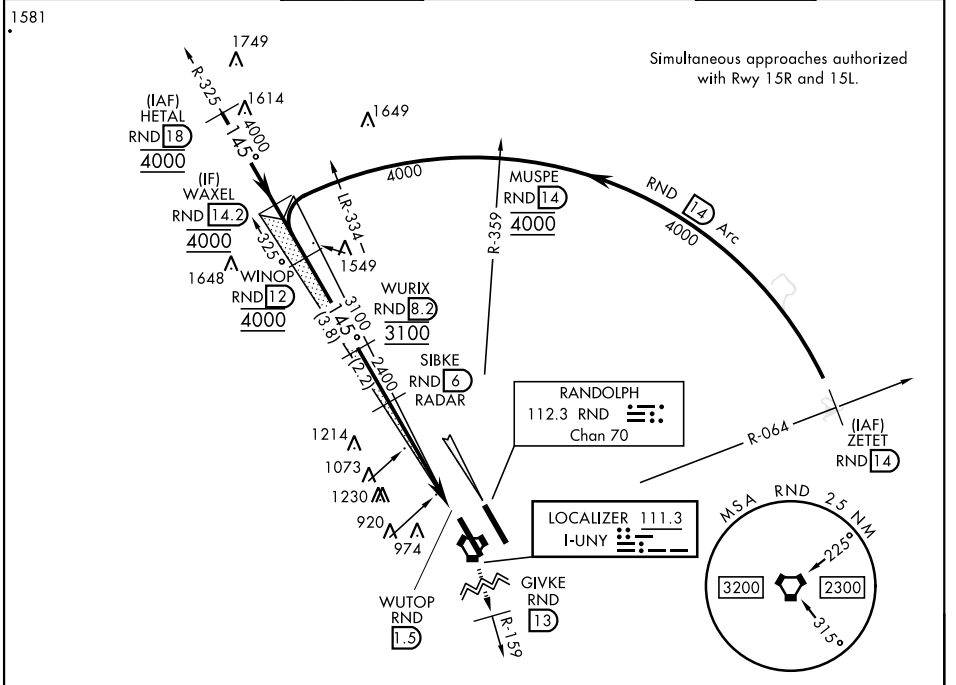
LOC I-UNY <b>111.3</b>	APCH CRS <b>145°</b>	Rwy Idg TDZE <b>761</b> Arpt Elev <b>761</b>	[USAF]	RANDOLPH AFB (KRND)
---------------------------	-------------------------	---	--------	---------------------

RADAR or DME required

\* Circling not authorized NE of Rwy 15R-33L.

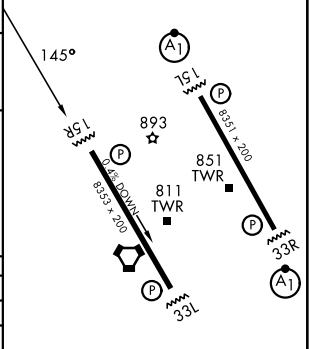
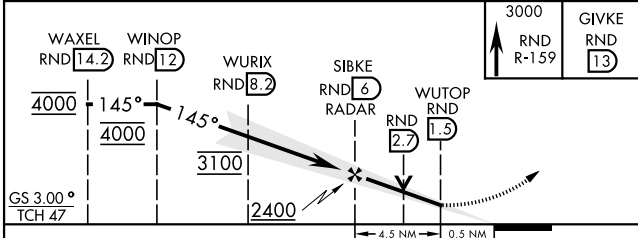
MISSED APPROACH: Climb to 3000 on RND VORTAC R-159 to 13 DME (GIVKE). Expect ATC instructions.

ATIS ★ <b>290.525</b>	SAN ANTONIO APP CON <b>128.05 318.1</b>	TOWER ★ <b>128.25 294.7</b>	GND CON <b>119.65 275.8</b>	HANGOVER ATIS ★ <b>327.8</b>	HANGOVER TOWER ★ <b>120.5 291.1</b>	HANGOVER GND CON <b>124.75 353.75</b>
--------------------------	--	--------------------------------	--------------------------------	---------------------------------	--	--



ELEV	761	TDZE	761
------	-----	------	-----

EMERG SAFE ALT 100 NM 4100



CATEGORY	A	B	C	D	E
S-ILS 15R	961/40		200	(200-3/4)	
S-LOC 15R	1340/55 579 (600-1)		1340-1 5/8	579 (600-1 5/8)	
CIRCLING *	1340-1 579 (600-1)		1500-2 739 (800-2)	2000-3	1239 (1300-3)

HIRL all rwys  
ALS Rwy 15L nstd len 2100'

UNIVERSAL CITY, TEXAS 29°32'N-98°17'W RANDOLPH AFB (KRND)

Amtd 3 17APR25

# ILS or LOC RWY 15R

SC-3, 14 MAY 2026 to 11 JUN 2026

SC-3, 14 MAY 2026 to 11 JUN 2026