

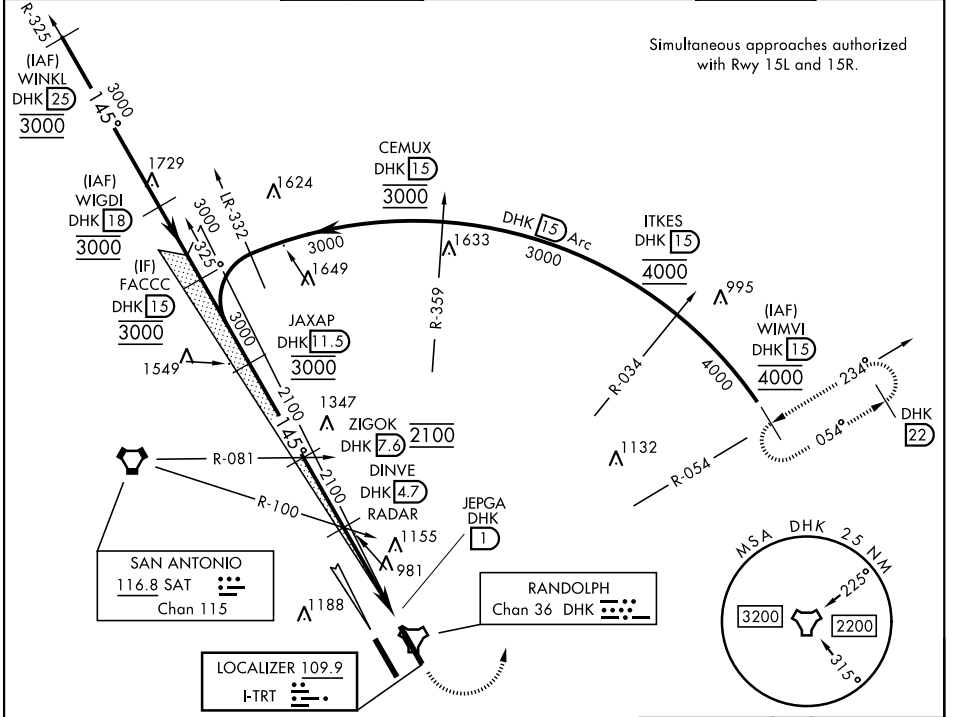
UNIVERSAL CITY, TEXAS

ILS or LOC Y RWY 15L

LOC I-TRT 109.9	APCH CRS 145°	Rwy Idg TDZE Arpt Elev 8351 742 761	[USAF]	RANDOLPH AFB (KRND)		
---------------------------	-------------------------	---	--------	---------------------	--	--

RADAR or DME required		ALS-F1 		MISSED APPROACH: Climb to 1500, then climbing left turn heading 024° to 3000. Intercept DHK TACAN R-054 to WIMVI and hold.		
* When ALS inop, increase CAT AB RVR to 55, vis to 1 mile; CAT CDE to 1 1/2 miles.						
** Circling not authorized SW of Rwy 15L-33R.						
ATIS ★ 290.525	SAN ANTONIO APP CON 128.05 318.1	TOWER ★ 128.25 294.7	GND CON 119.65 275.8	HANGOVER ATIS ★ 327.8	HANGOVER TOWER ★ 120.5 291.1	HANGOVER GND CON 124.75 353.75

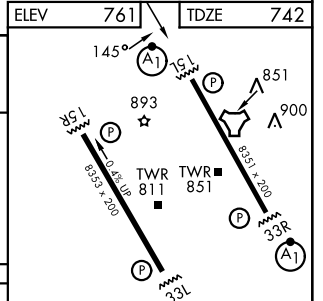
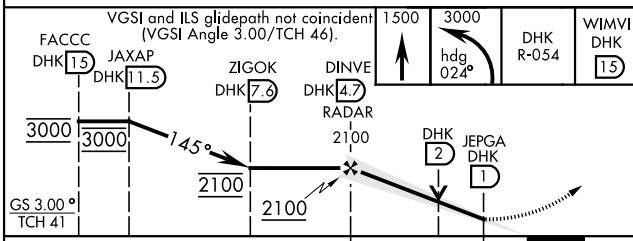
Simultaneous approaches authorized with Rwy 15L and 15R.



SC-3, 14 MAY 2026 to 11 JUN 2026

SC-3, 14 MAY 2026 to 11 JUN 2026

EMERG SAFE ALT 100 NM 4100



CATEGORY	A	B	C	D	E
S-ILS 15L	942/40		200	(200-34)	
S-LOC 15L *	1260/40	518 (500-3/4)	1260-1 1/4	518	(500-1 1/4)
CIRCLING **	1260-1	499 (500-1)	1260-1 1/2 499 (500-1 1/2)	1900-3	1139 (1200-3)

HIRL all rwys					
ALS Rwy 15L nstd len 2100'					
FAF to MAP 3.7 NM					
Knots	60	90	120	150	180
Min:Sec	3:42	2:28	1:51	1:29	1:14

UNIVERSAL CITY, TEXAS
Amdt 3 20FEB25

29°32'N-98°17'W

RANDOLPH AFB (KRND)

ILS or LOC Y RWY 15L