

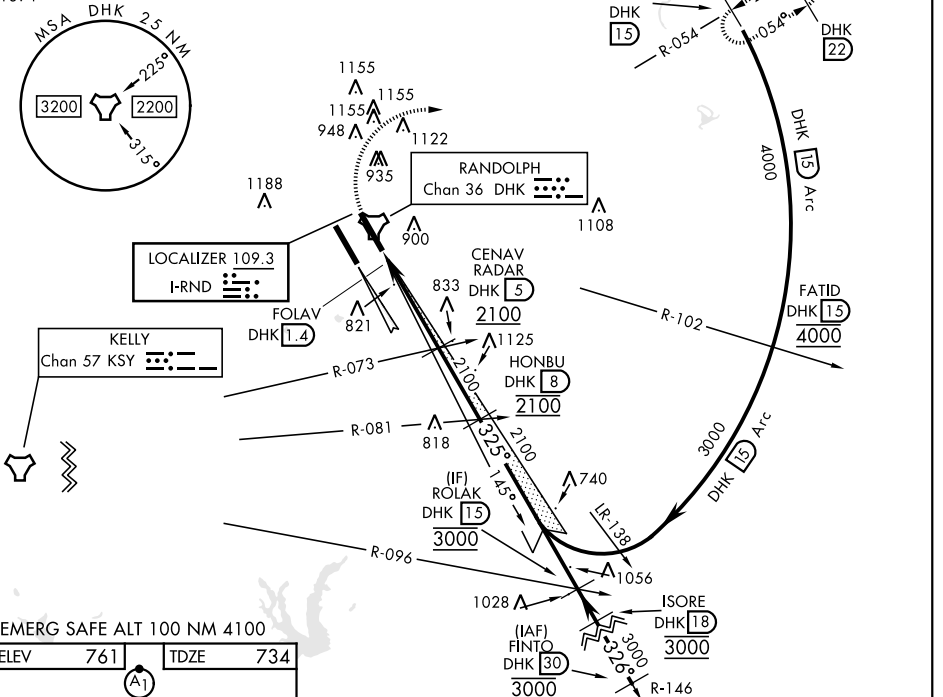
ILS or LOC Y RWY 33R

LOC I-RND 109.3	APCH CRS 325°	Rwy Idg TDZE Arprt Elev 8351 734 761	[USAF]	RANDOLPH AFB (KRND)
---------------------------	-------------------------	--	--------	---------------------

RADAR or DME required		ALS-1 A1	MISSED APPROACH: Climb to 1500, then climbing right turn hdg 084° to 3000. Intercept DHK R-054 to WIMVI and hold.			
* When ALS inop, increase RVR to 40 and vis to ¼ mile. ** When ALS inop, increase CAT AB RVR to 55, vis to 1 mile; CAT CDE vis to 1½ miles. *** Circling not authorized SW of Rwy 15L-33R.						
ATIS ★ 290.525	SAN ANTONIO APP CON 128.05 318.1	TOWER ★ 128.25 294.7	GND CON 119.65 275.8	HANGOVER ATIS ★ 327.8	HANGOVER TOWER ★ 120.5 291.1	HANGOVER GND CON 124.75 353.75

Simultaneous approaches authorized with Rwy 33R and 33L.

1394



EMERG SAFE ALT 100 NM 4100

ELEV 761	TDZE 734							
		1500	3000	DHK R-054	WIMVI DHK 15	CENAV DHK 5	HONBU DHK 8	ROLAK DHK 15
				DHK 2.2	RADAR 2100	VGSI and ILS glidepath not coincident (VGSI Angle 3.00°/TCH 42). GP 3.00° TCH 53		
HIRL all rwys ALS Rwy 15L nstd len 2100' 821' FAF to MAP 3.6 NM		0.5 NM		3.6 NM				
		CATEGORY	A	B	C	D	E	
		S-ILS 33R *	933/24		200	(200-½)		
		S-LOC 33R **	1180/24	447 (500-½)	1180/45	447 (500-¾)		
		CIRCLING ***	1240-1	479 (500-1)	1260-1½ 499 (500-1½)	1900-3	1139 (1200-3)	
Knots	60	90	120	150	180			
Min:Sec	3:36	2:24	1:48	1:26	1:12			

ILS or LOC Y RWY 33R

SC-3, 14 MAY 2026 to 11 JUN 2026

SC-3, 14 MAY 2026 to 11 JUN 2026