

UNIVERSAL CITY, TEXAS

RNAV (GPS) RWY 15L

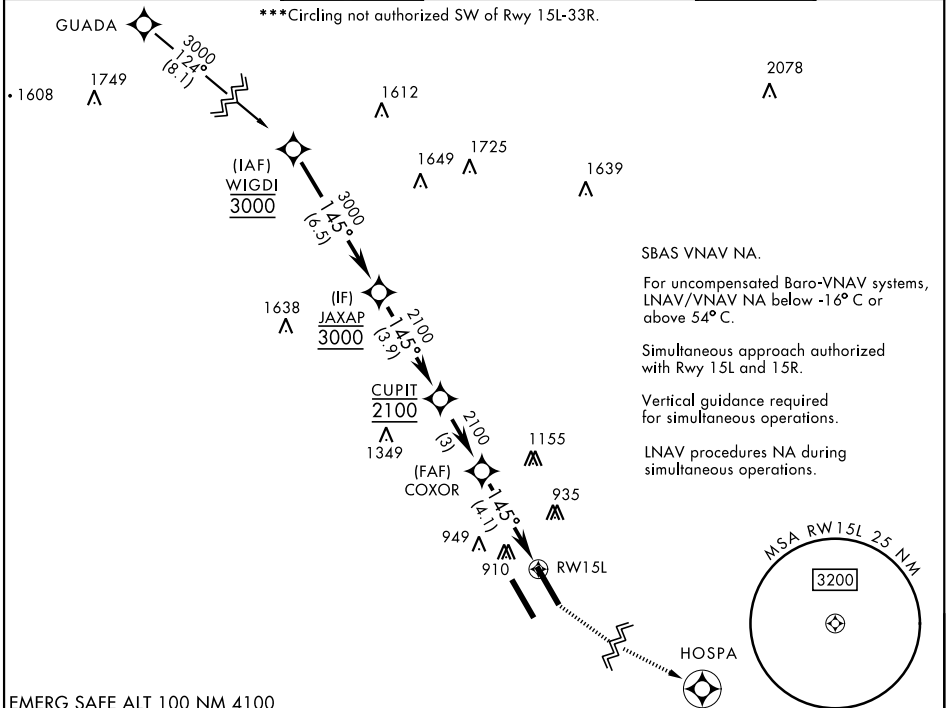
APCH CRS 145°	Rwy Idg TDZE Arpt Elev 8351 742 761
-------------------------	---

[USAF]

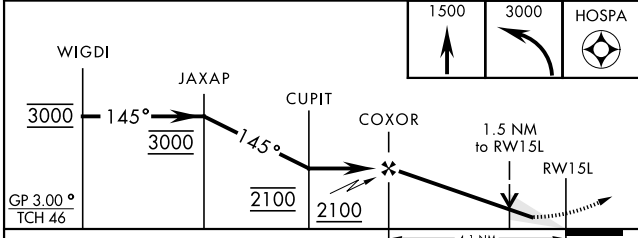
RANDOLPH AFB (KRND)

RNP APCH - GPS		ALSF-1 	MISSED APPROACH: Climb to 1500, then climbing left turn to 3000 direct HOSPA. Expect ATC instructions.
*When ALS inop, increase CAT ABC RVR to 45, vis to 7/8 mile, CAT DE RVR to 50, vis to 1 mile. **When ALS inop, increase CAT AB RVR to 55, vis to 1 mile; CAT CDE vis to 1 1/8 miles.			

ATIS ★ 290.525	SAN ANTONIO APP CON 128.05 318.1	TOWER ★ 128.25 294.7	GND CON 119.65 275.8	HANGOVER ATIS ★ 327.8	HANGOVER TOWER ★ 120.5 291.1	HANGOVER GND CON 124.75 353.75
--------------------------	--	--------------------------------	--------------------------------	---------------------------------	--	--

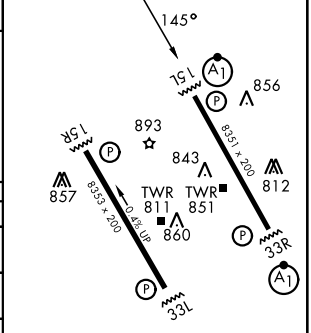


EMERG SAFE ALT 100 NM 4100



ELEV	761	TDZE	742
------	-----	------	-----

CATEGORY	A	B	C	D	E
LNAV/VNAV DA *	1043/40 301 (300-3/4)	1054/40 312 (300-3/4)	1062/40 320 (400-3/4)	1073/40 331 (400-3/4)	
LNAV MDA **	1260/40 518 (500-3/4)		1260-1/4	518	(500-1/4)
CIRCLING ***	1260-1	499 (500-1)	1260-1 1/2 499 (500-1 1/2)	1900-3	1139 (1200-3)



HIRL all rwys
ALS Rwy 15L nstd len 2100'

UNIVERSAL CITY, TEXAS

29°32'N-98°17'W

RANDOLPH AFB (KRND)

Amdt 4 20FEB25

RNAV (GPS) RWY 15L

SC-3, 14 MAY 2026 to 11 JUN 2026

SC-3, 14 MAY 2026 to 11 JUN 2026