

SNIDR TWO DEPARTURE (RNAV)

SC-3, 14 MAY 2026 to 11 JUN 2026

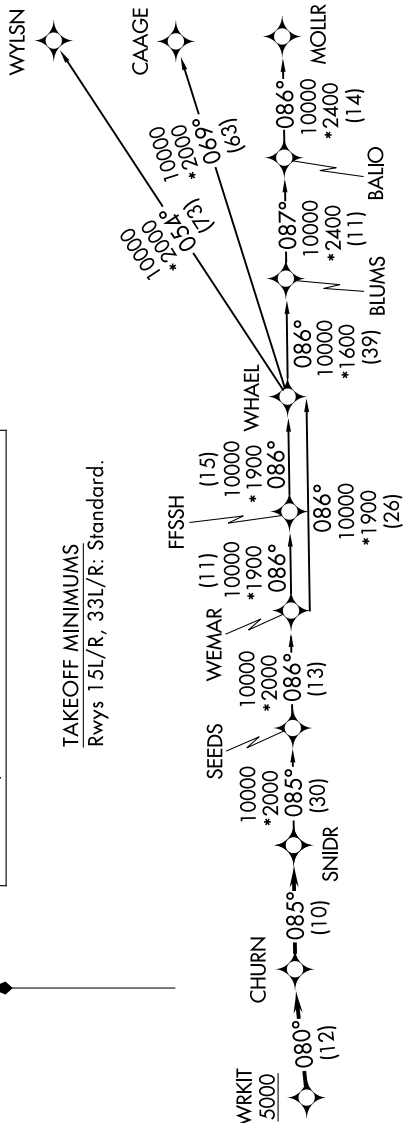
SAN ANTONIO DEP CON
127.1 290.225
ATIS ★
290.525
ATIS (HANGOVER) ★
327.8
CLNC DEL (15L-33R)
338.35
GND CON
119.65 275.8
GND CON (HANGOVER)
124.75 353.75
TOWER ★
128.25 294.7
HANGOVER TOWER ★
120.5 291.1

RNAV 1 - DME/DME/IRU or GPS.
RADAR required for non-GPS equipped aircraft.
RADAR required.

**TOP ALTITUDE:
ASSIGNED BY ATC**

TAKEOFF MINIMUMS
Rwys 15L/R, 33L/R: Standard.

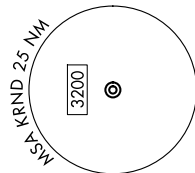
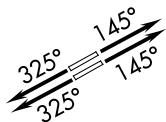
N



DEPARTURE ROUTE DESCRIPTION

TAKEOFF RUNWAYS 15L/R: Climb on heading 145° or as assigned by ATC, for vectors to WRKIT, thence. . .
TAKEOFF RUNWAYS 33L/R: Climb on heading 325° or as assigned by ATC, for vectors to WRKIT, thence. . .
 . . . on track 080° to CHURN, then on track 085° to SNIDR. Expect filed altitude 10 minutes after departure.

- BLUMS TRANSITION (SNIDR2.BLUMS)
- CAAGE TRANSITION (SNIDR2.CAAGE)
- FFSSH TRANSITION (SNIDR2.FFSSH)
- MOLLR TRANSITION (SNIDR2.MOLLR)
- SEEDS TRANSITION (SNIDR2.SEEDS)
- WEMAR TRANSITION (SNIDR2.WEMAR)
- WHAEL TRANSITION (SNIDR2.WHAEL)
- WYLSN TRANSITION (SNIDR2.WYLSN)



NOTE: Chart not to scale.

SNIDR TWO DEPARTURE (RNAV)

(SNIDR2.SNIDR) 07AUG25

SC-3, 14 MAY 2026 to 11 JUN 2026