

# YODUH TWO DEPARTURE (RNAV)

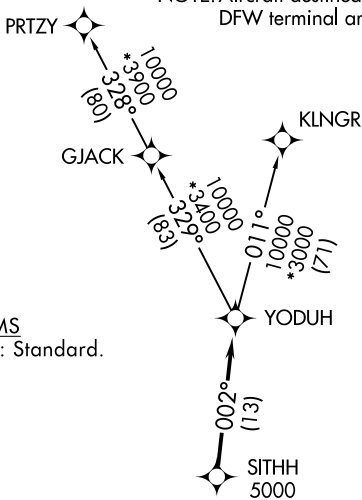
SAN ANTONIO DEP CON  
 127.1 290.225  
 ATIS ★  
 290.525  
 ATIS (HANGOVER) ★  
 327.8  
 CLNC DEL (15L-33R)  
 338.35  
 GND CON  
 119.65 275.8  
 GND CON (HANGOVER)  
 124.75 353.75  
 TOWER ★  
 128.25 294.7  
 HANGOVER TOWER ★  
 120.5 291.1

RNAV 1 - DME/DME IRU or GPS.

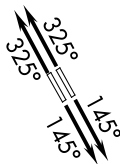
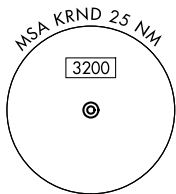
RADAR required for non-GPS equipped aircraft.  
RADAR required.

**TOP ALTITUDE:  
ASSIGNED BY ATC**

NOTE: Aircraft destined for airports north/northeast of DFW terminal area must file the KLNGR Transition.



TAKEOFF MINIMUMS  
Rwys 15L/R, 33L/R: Standard.



NOTE: Chart not to scale.

## DEPARTURE ROUTE DESCRIPTION

TAKEOFF RUNWAYS 15L/R: Climb on heading 145° or as assigned by ATC, for vectors to SITHH, thence. . .

TAKEOFF RUNWAYS 33L/R: Climb on heading 325° or as assigned by ATC, for vectors to SITHH, thence. . .

. . . on track 002° to YODUH, then on transition. Maintain ATC assigned altitude. Expect filed altitude 10 minutes after departure.

KLNGR TRANSITION (YODUH2.KLNGR)  
PRTZY TRANSITION (YODUH2.PRTZY)