

LOC I-RCA 110.3	APCH CRS 310°	Rwy ldg 13,497 TDZE 3192 Arprt Elev 3276	[USAF]	ELLSWORTH AFB (KRCA)
---------------------------	-------------------------	---	--------	----------------------

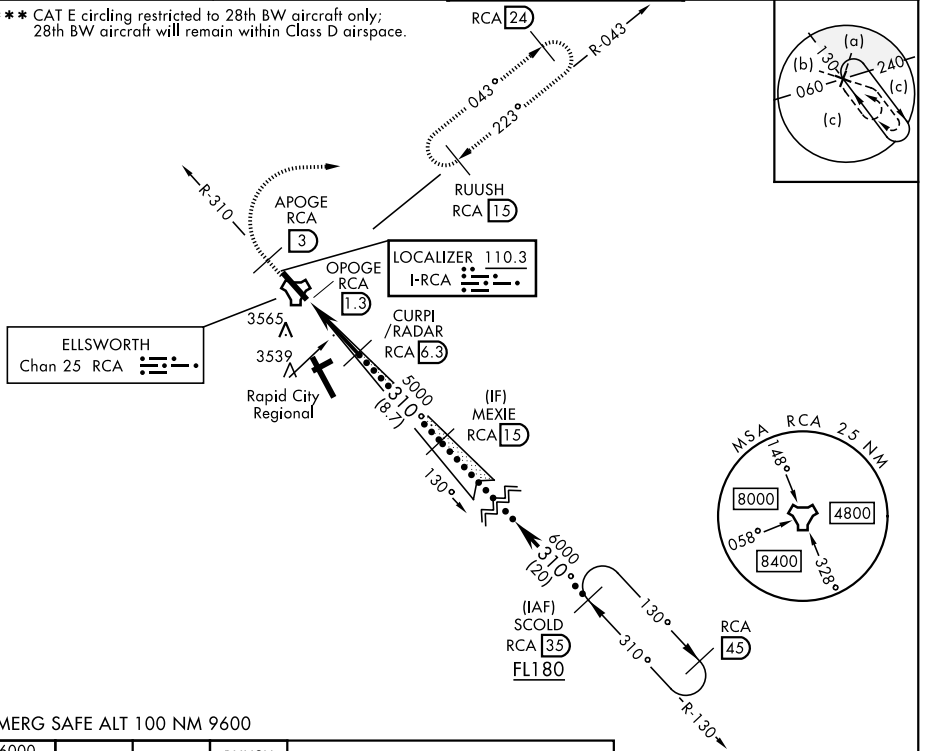
RADAR or DME required.

ALSF-1 MISSED APPROACH: Track outbound RCA R-310 to 3 DME (APOGE), then turn right to join RCA R-043 to 15 DME (RUUSH), then turn right to join RCA R-043 to 15 DME (RUUSH) and hold. Maintain 6000.

* When ALS inop, increase RVR to 40, vis to 3/4 mile.
 ** When ALS inop, increase vis to 1 3/4 miles.

ATIS ★ 120.625 269.9	APP CON 119.5 259.1	TOWER ★ 126.05 253.5	GND CON 121.8 275.8
--------------------------------	-------------------------------	--------------------------------	-------------------------------

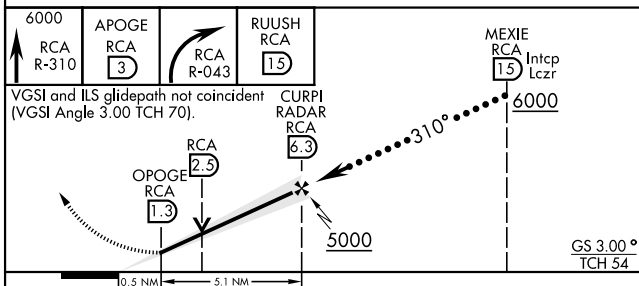
*** CAT E circling restricted to 28th BW aircraft only; 28th BW aircraft will remain within Class D airspace.



NC-1, 14 MAY 2026 to 11 JUN 2026

NC-1, 14 MAY 2026 to 11 JUN 2026

EMERG SAFE ALT 100 NM 9600



ELEV	3276	TDZE	3192		
HIRL Rwy 13-31					
FAF to MAP 5.1 NM					
Knots	120	140	160	180	200
Min:Sec	2:33	2:11	1:55	1:42	1:32

CATEGORY	C	D	E
S-ILS 31*	3392/24	200	(200-1/2)
S-LOC 31**	3800-1 3/8	608	(600-1 3/8)
CIRCLING***	3880-1 3/4 604 (700-1 3/4)	4040-2 1/2 764 (800-2 1/2)	4100-3 824 (900-3)