

# HI-TACAN Z RWY 13

TACAN RCA Chan <b>25</b>	APCH CRS <b>136°</b>	Rwy ldg <b>13,497</b> TDZE <b>3276</b> Arprt Elev <b>3276</b>
-----------------------------	-------------------------	---

[USAF]

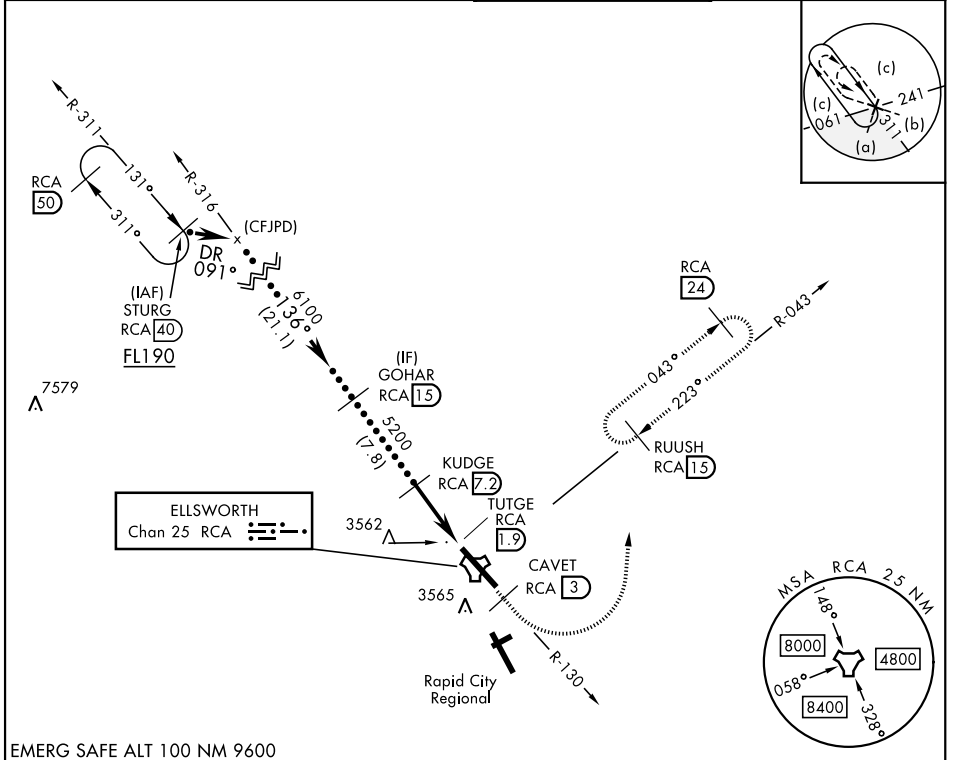
ELLSWORTH AFB (KRCA)

★ When ALS inop, increase CAT CDE vis to 1½ mile.  
 \*\* CAT E circling restricted to 28th BW aircraft only; 28th BW aircraft will remain within Class D airspace.



MISSED APPROACH: Track outbound RCA R-130 to 3 DME (CAVET), then turn left to join RCA R-043 to 15 DME (RUUSH) and hold. Maintain 6000.

ATIS ★ <b>120.625 269.9</b>	APP CON <b>119.5 259.1</b>	TOWER ★ <b>126.05 253.5</b>	GND CON <b>121.8 275.8</b>
--------------------------------	-------------------------------	--------------------------------	-------------------------------



NC-1, 14 MAY 2026 to 11 JUN 2026

NC-1, 14 MAY 2026 to 11 JUN 2026

EMERG SAFE ALT 100 NM 9600

	6000 RCA R-130	CAVET RCA 3	RUUSH RCA 15	ELEV 3276	TDZE 3276
	GOHAR RCA 15	KUDGE RCA 7.2	TUTGE RCA 1.9		
CATEGORY	C	D	E		
S-13 *	3820/60	544 (600-1½)			
CIRCLING **	3880-1¾ 604 (700-1¾)	4040-2½ 764 (800-2½)	4100-3 824 (900-3)	HIRL Rwy 13-31	

# HI-TACAN Z RWY 13