

RAPID CITY, SOUTH DAKOTA

ILS or LOC Y RWY 31

LOC I-RCA 110.3	APCH CRS 310°	Rwy Idg 13,497 TDZE 3192 Arprt Elev 3276
---------------------------	-------------------------	---

[USAF]

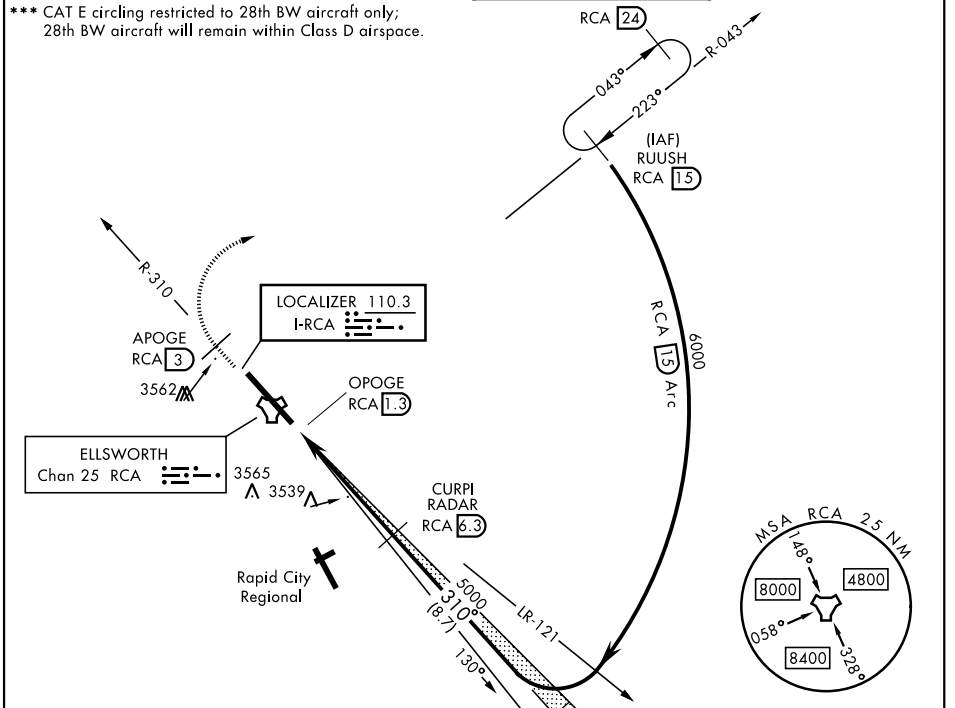
ELLSWORTH AFB (KRCA)

RADAR or DME required.
 * When ALS inop, increase RVR to 40 and vis to ¼ mile.
 ** When ALS inop, increase CAT AB RVR to 55 and vis to 1 mile, CAT CDE vis to 1¼ miles.

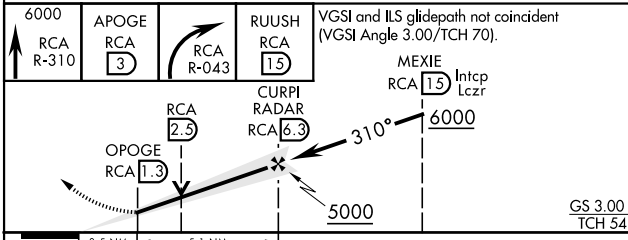
ALSF-1
 MISSED APPROACH: Track outbound RCA R-310 to 3 DME (APOGE), then turn right to join RCA R-043 outbound to RCA 15 DME (RUUSH) and hold. Maintain 6000.

ATIS★ 120.625 269.9	APP CON 119.5 259.1	TOWER★ 126.05 253.5	GND CON 121.8 275.8
-------------------------------	-------------------------------	-------------------------------	-------------------------------

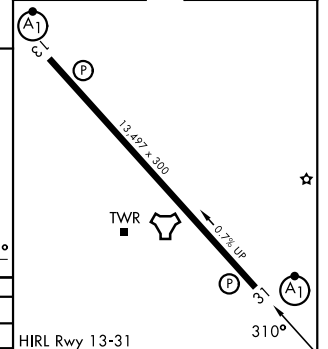
*** CAT E circling restricted to 28th BW aircraft only;
 28th BW aircraft will remain within Class D airspace.



EMERG SAFE ALT 100 NM 9600



ELEV	3276	TDZE	3192
------	------	------	------



CATEGORY	A	B	C	D	E
S-ILS 31*	3392/24		200	(200-½)	
S-LOC 31**	3800/24	608 (600-½)	3800-1¾	608 (600-1¾)	
CIRCLING***	3860-1 584 (600-1)	3880-1 604 (700-1)	3880-1¾ 604 (700-1¾)	4040-2½ 764 (800-2½)	4100-3 824 (900-3)

FAF to MAP 5.1 NM					
Knots	60	90	120	150	180
Min:Sec	5:06	3:24	2:33	2:02	1:42

RAPID CITY, SOUTH DAKOTA

44°09'N-103°06'W

ELLSWORTH AFB (KRCA)

Amdt 2 14MAY26

ILS or LOC Y RWY 31

NC-1, 14 MAY 2026 to 11 JUN 2026

NC-1, 14 MAY 2026 to 11 JUN 2026