

RAPID CITY, SOUTH DAKOTA

TACAN-A

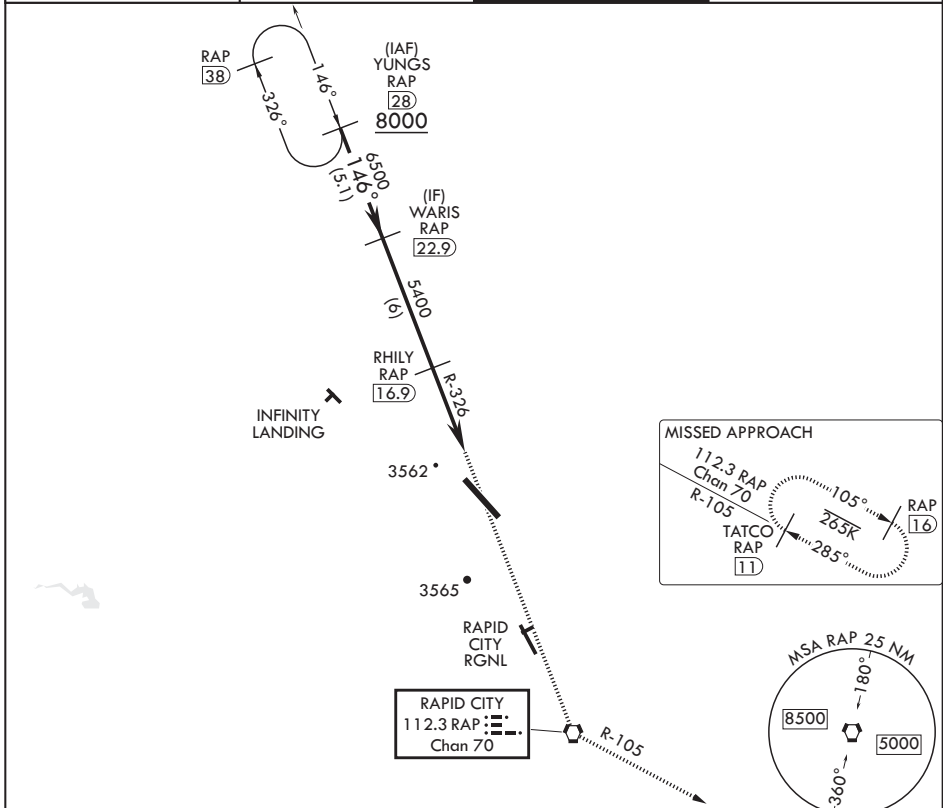
VORTAC RAP 112.3 Chan 70	APCH CRS 146°	Rwy Idg TDZE Arprt Elev N/A N/A 3276
--------------------------------	------------------	---

(USAF)

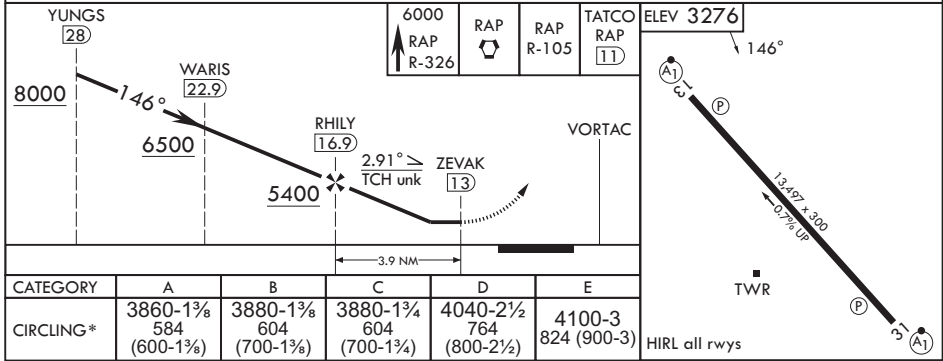
ELLSWORTH AFB (KRCA)

▼ * CAT E circling restricted to 28th BW aircraft only; 28th BW aircraft will remain within Class D airspace. MISSED APPROACH: Track inbound RAP R-326 to RAP VORTAC then turn left to join RAP R-105 outbound to 11 DME and hold. Maintain 6000.

ATIS* 120.625 269.9	APP CON 119.5 259.1	TOWER* 126.05 253.5	GND CON 121.8 275.8
------------------------	------------------------	------------------------	------------------------



EMERG SAFE ALT 100 NM 9600



RAPID CITY, SOUTH DAKOTA 44°09'N - 103°06'W ELLSWORTH AFB (KRCA)

NC-1, 14 MAY 2026 to 11 JUN 2026

NC-1, 14 MAY 2026 to 11 JUN 2026