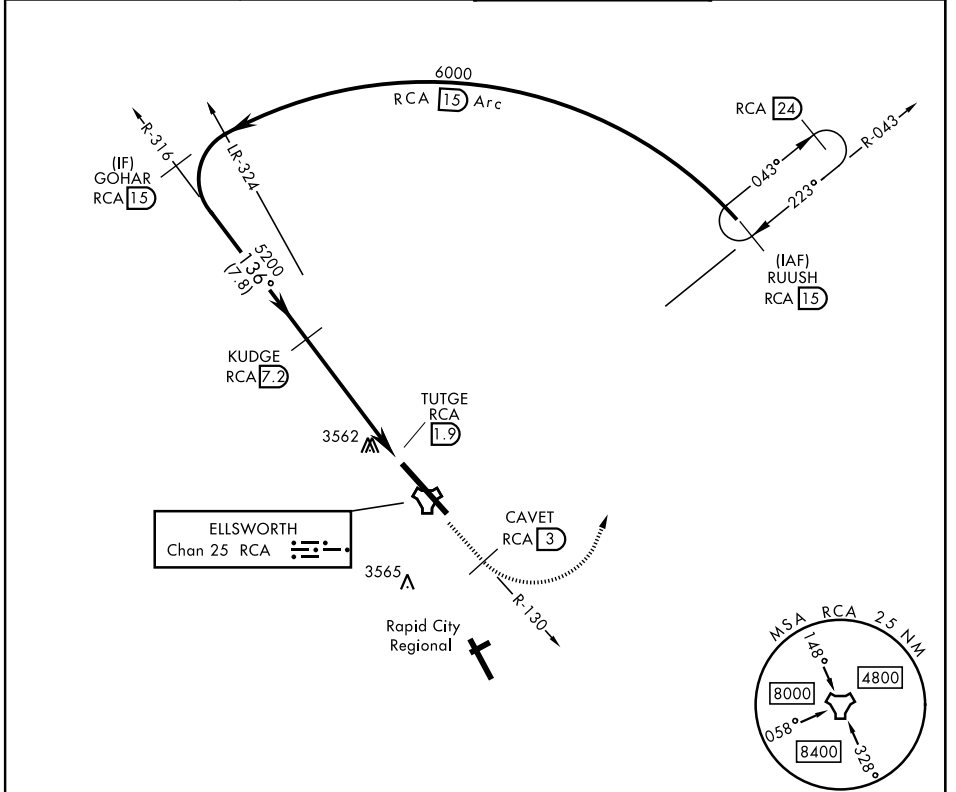


TACAN Y RWY 13

TACAN RCA Chan 25	APCH CRS 136°	Rwy Idg 13,497 TDZE 3276 Arprt Elev 3276	[USAF]	ELLSWORTH AFB (KRCA)
*When ALS inop, increase CAT AB RVR to 55 and vis to 1 mile, CAT CDE vis to 1½ miles. **CAT E circling restricted to 28th BW aircraft only; 28th BW aircraft will remain within Class D airspace.		ALSF-1 	MISSED APPROACH: Track outbound RCA R-130 to 3 DME (CAVET), then turn left to join RCA R-043 to RCA 15 DME (RUUSH) and hold. Maintain 6000.	

ATIS * 120.625 269.9	APP CON 119.5 259.1	TOWER * 126.05 253.5	GND CON 121.8 275.8
--------------------------------	-------------------------------	--------------------------------	-------------------------------



EMERG SAFE ALT 100 NM 9600

GOHAR RCA 15	6000	CAVET RCA 3	R-130	RUUSH RCA 15	ELEV 3276	TDZE 3276
6000	136°	KUDGE RCA 7.2	RCA 3	TUTGE RCA 1.9	A1	136°
5200	3.05°	TCH 60	5.3 NM	0.5	13,497-300	0.2% DOWN
CATEGORY	A	B	C	D	E	
S-13 *	3820/24	544 (600-½)	3820/60	544 (600-1½)		
CIRCLING **	3860-1 584 (600-1)	3880-1 604 (700-1)	3880-1¾ 604 (700-1¾)	4040-2½ 764 (800-2½)	4100-3 824 (900-3)	HIRL Rwy 13-31

TACAN Y RWY 13

NC-1, 14 MAY 2026 to 11 JUN 2026

NC-1, 14 MAY 2026 to 11 JUN 2026