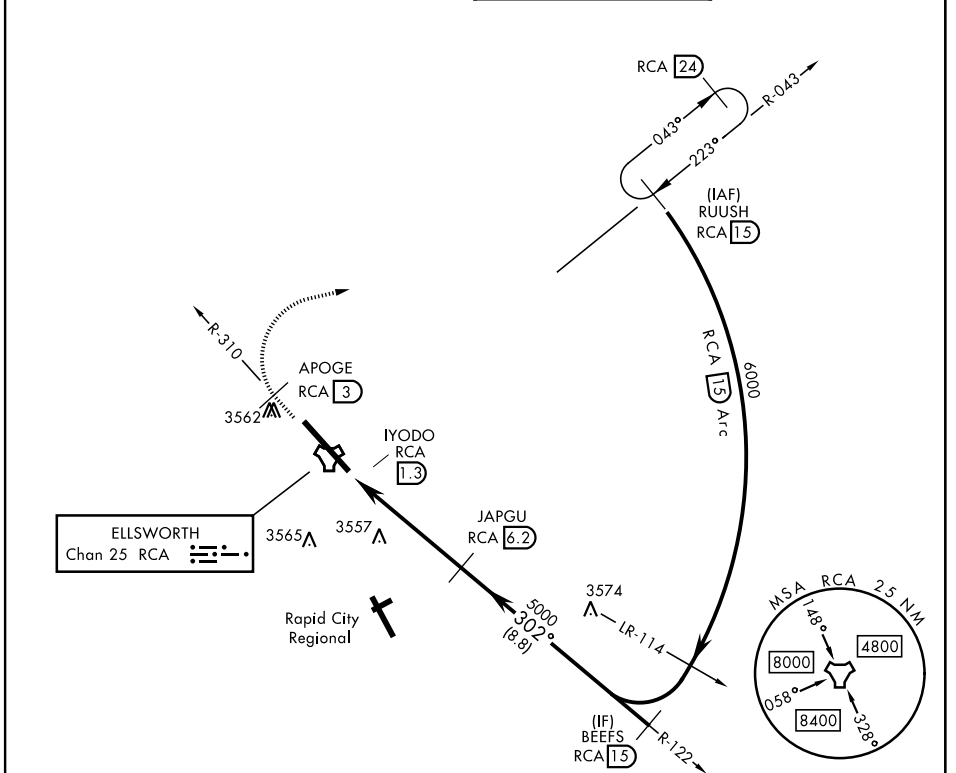


# TACAN Y RWY 31

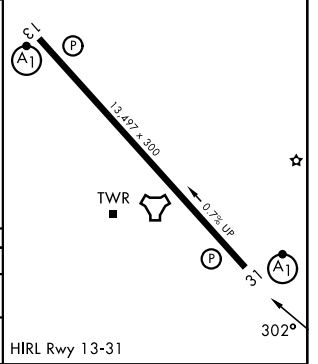
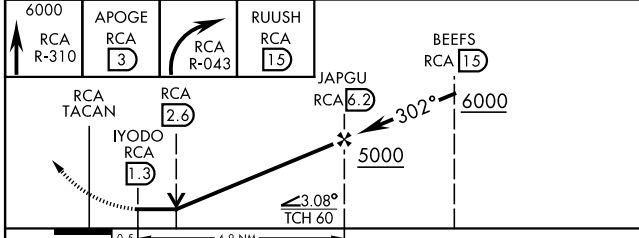
TACAN RCA Chan <b>25</b>	APCH CRS <b>302°</b>	Rwy ldg <b>13,497</b> TDZE <b>3192</b> Arprt Elev <b>3276</b>	[USAF]	ELLSWORTH AFB (KRCA)
-----------------------------	-------------------------	---	--------	----------------------

▼ \* When ALS inop, increase CAT AB RVR to 55 and vis to 1 mile, increase CAT CDE vis to 1¾ miles.  
 \*\* CAT E circling restricted to 28th BW aircraft only; 28th BW aircraft will remain within Class D airspace.

ATIS ★ <b>120.625 269.9</b>	APP CON <b>119.5 259.1</b>	TOWER ★ <b>126.05 253.5</b>	GND CON <b>121.8 275.8</b>
--------------------------------	-------------------------------	--------------------------------	-------------------------------



EMERG SAFE ALT 100 NM 9600	ELEV 3276	TDZE 3192
----------------------------	-----------	-----------



CATEGORY	A	B	C	D	E
S-31*	3820/24	628 (600-½)	3820-1¾	628 (600-1¾)	
CIRCLING**	3860-1 584 (600-1)	3880-1 604 (700-1)	3880-1¾ 604 (700-1¾)	4040-2½ 764 (800-2½)	4100-3 824 (900-3)

HIRL Rwy 13-31

# TACAN Y RWY 31

NC-1, 14 MAY 2026 to 11 JUN 2026

NC-1, 14 MAY 2026 to 11 JUN 2026