

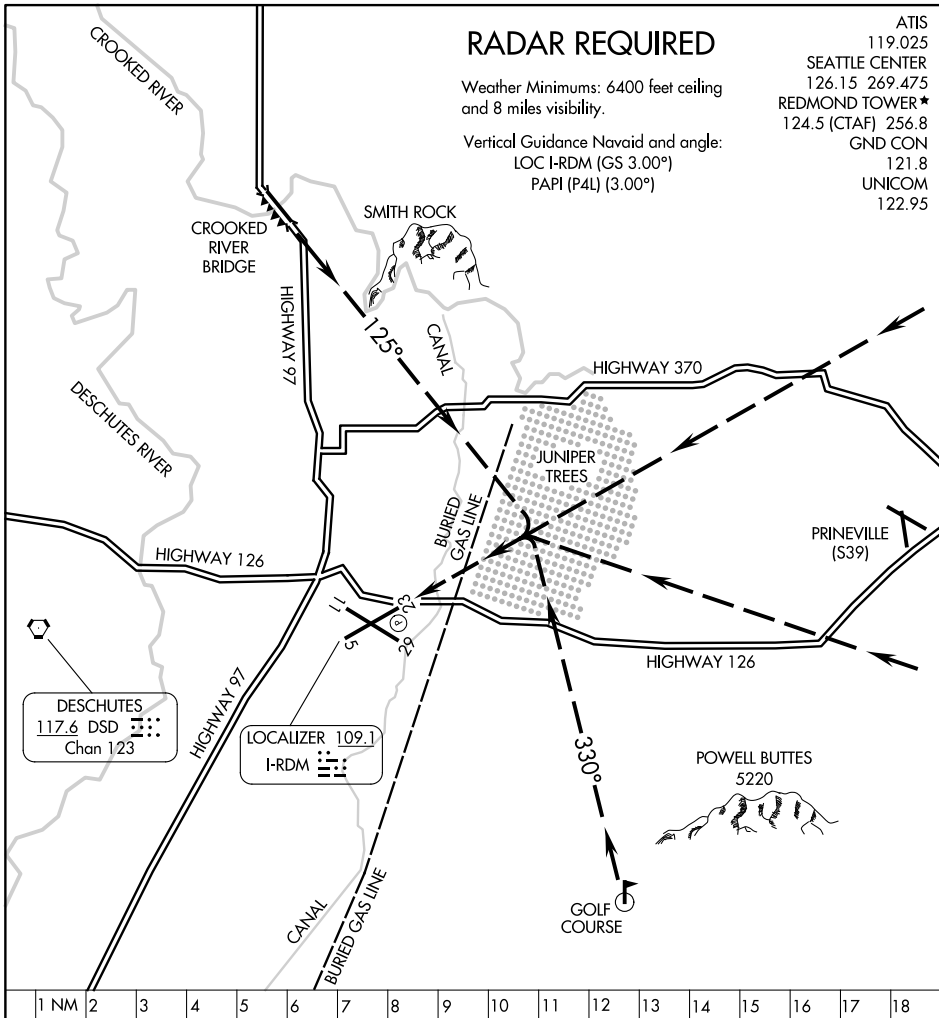
JUNIPER VISUAL RWY 23

RADAR REQUIRED

Weather Minimums: 6400 feet ceiling and 8 miles visibility.

Vertical Guidance Navaid and angle:
LOC I-RDM (GS 3.00°)
PAPI (P4L) (3.00°)

ATIS	119.025
SEATTLE CENTER	126.15 269.475
REDMOND TOWER *	124.5 (CTAF) 256.8
GND CON	121.8
UNICOM	122.95



NW-1, 14 MAY 2026 to 11 JUN 2026

NW-1, 14 MAY 2026 to 11 JUN 2026

JUNIPER VISUAL APPROACH RWY 23

PROCEDURE NOT AUTHORIZED AT NIGHT

JUNIPER VISUAL RWY 23