

WAAS CH 90214 W29A	APP CRS 288°	Rwy Ldg TDZE Apt Elev	7006 3082 3082
--	------------------------	-----------------------------	---

RNAV (GPS) Z RWY 29

ROBERTS FLD (RDM)

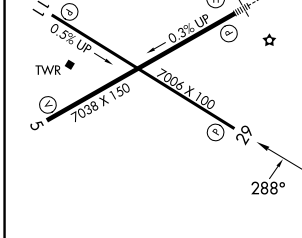
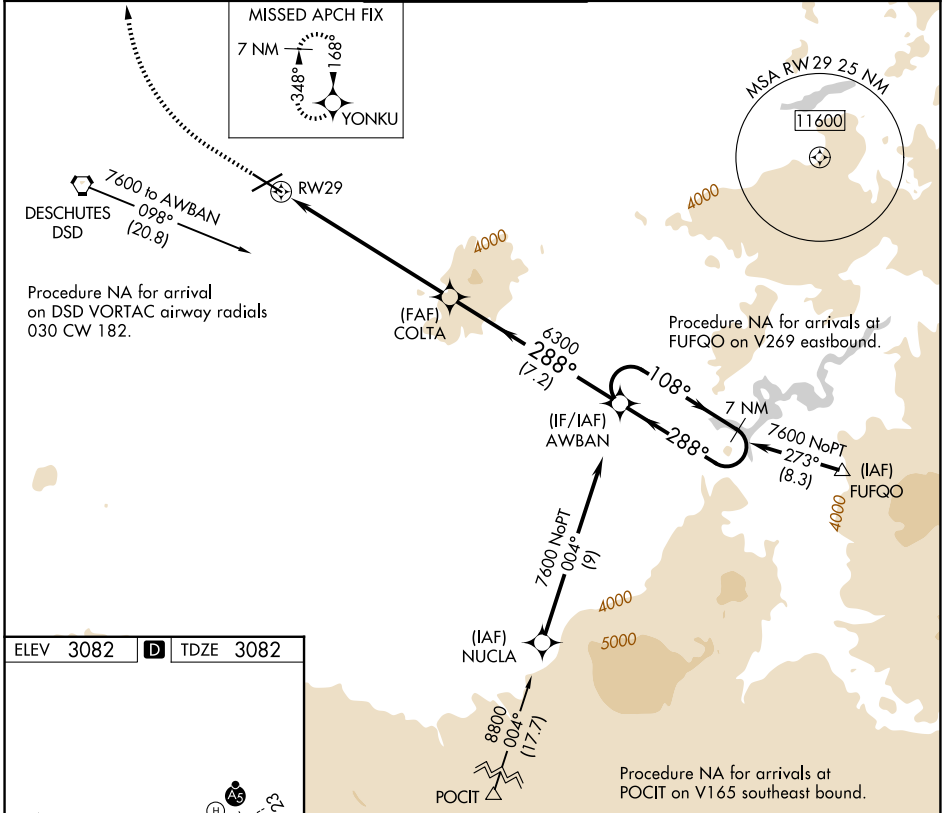
RNP APCH-GPS.

⚠ For uncompensated Baro-VNAV systems, LNAV/VNAV NA below -18°C or above 43°C.

❄ -16°C

MISSED APPROACH: Climb to 4000 then climbing right turn to 7000 direct YONKU and hold, continue climb-in-hold to 7000.

ATIS 119.025	SEATTLE CENTER 126.15 269.475	REDMOND TOWER★ 124.5 (CTAF) 0 256.8	GND CON 121.8	UNICOM 122.95
------------------------	---	---	-------------------------	-------------------------



Procedure NA for arrivals at POCIT on V165 southeast bound.

4000 7000 YONKU VGSi and RNAV glidepath not coincident (VGSi Angle 3.00/TCH 50).

7 NM Holding Pattern

AWBAN

COLTA

6300

288°

108°

7600

288°

GP 4.20°

TCH 43

7.1 NM

7.2 NM

RW29

7006 X 100

7038 X 150

0.5% UP

0.3% UP

288°

CATEGORY	A	B	C	D
LPV DA	3368-1	286 (300-1)		NA
LNAV/VNAV DA	3368-1	286 (300-1)		NA

REIL Rwy 5, 11, and 29 **Ⓛ**

HIRL Rwy 5-23 **Ⓛ**

MIRL Rwy 11-29 **Ⓛ**

NW-1, 14 MAY 2026 to 11 JUN 2026

NW-1, 14 MAY 2026 to 11 JUN 2026