

(DPUTY.DNGLE1) 26078

DNGLE ONE ARRIVAL (RNAV)

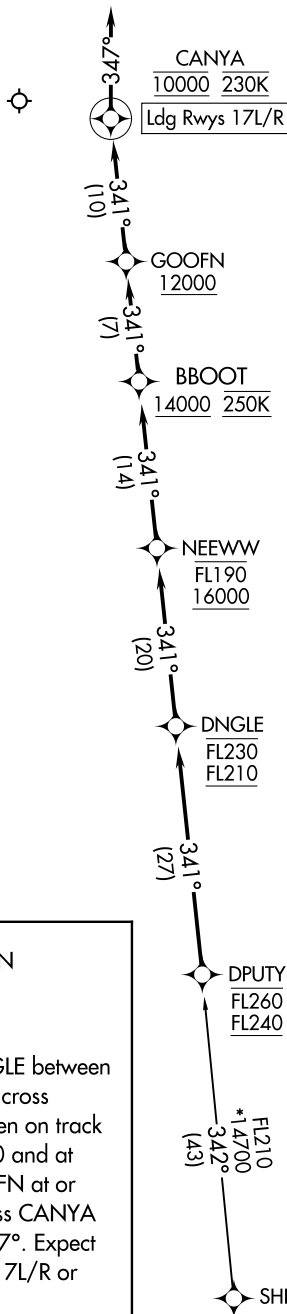
AL-346 (FAA)

RENO/TAHOE INTL (RNO)
RENO, NEVADA

RNAV 1 - DME/DME/IRU or GPS.

RADAR required.

NORCAL APP CON
119.2 279.55
D-ATIS
135.8 363.0
RENO TOWER
118.7 257.8



NOTE: Intense glider activity to FL180.

NOTE: Chart not to scale.

ARRIVAL ROUTE DESCRIPTION

SHERF TRANSITION (SHERF.DNGLE1)

From DPUTY on track 341° to cross DNGLE between FL210 and FL230, then on track 341° to cross NEEWW between 16000 and FL190, then on track 341° to cross BBOOT at or above 14000 and at 250K, then on track 341° to cross GOOFN at or above 12000, then on track 341° to cross CANYA at 10000 and at 230K, then on track 347°. Expect assigned instrument approach for Rwys 17L/R or RADAR vectors to final approach course.

SW-4, 14 MAY 2026 to 11 JUN 2026

SW-4, 14 MAY 2026 to 11 JUN 2026

DNGLE ONE ARRIVAL (RNAV)

(DPUTY.DNGLE1) 19MAR26

RENO, NEVADA
RENO/TAHOE INTL (RNO)