

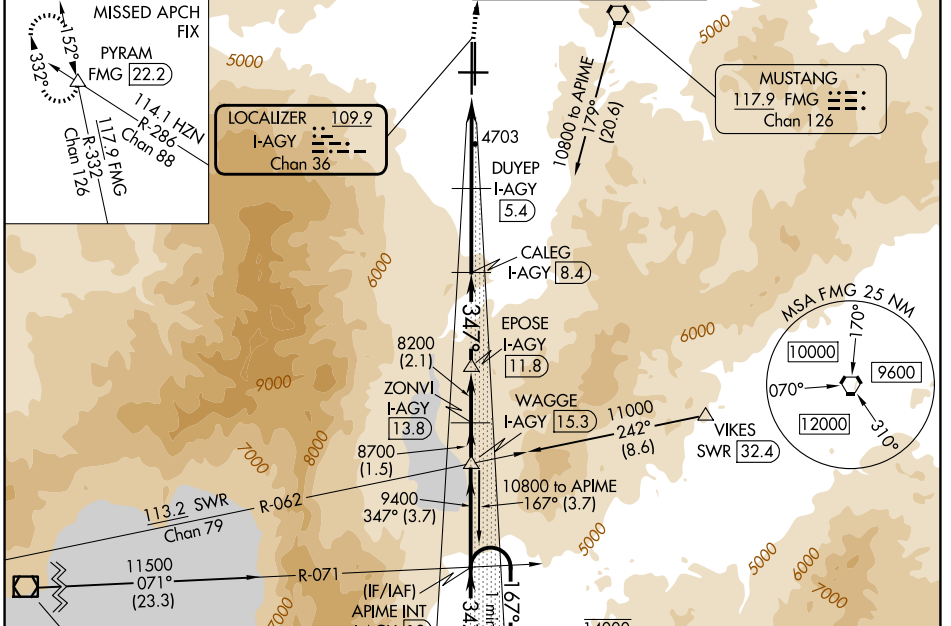
LOC/DME I-AGY 109.9 Chan 36	APP CRS 347°	Rwy Ldg 10011 TDZE 4410 Apt Elev 4415
---	------------------------	--

ILS or LOC RWY 35L

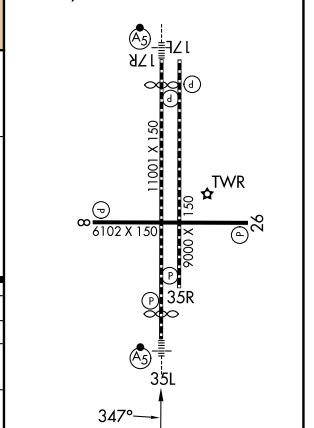
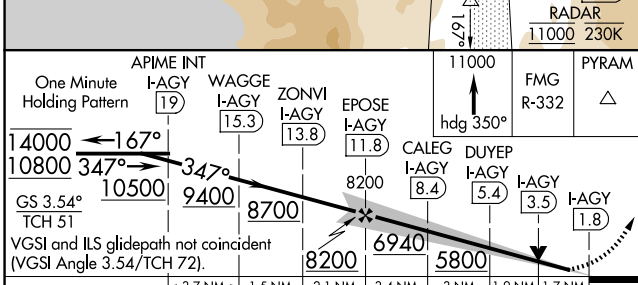
RENO/TAHOE INTL (RNO)

DME required.	MALS/R	MISSED APPROACH: Climb to 11000 on heading 350° and on FMG VORTAC R-332 to PYRAM INT/FMG 22.2 DME and hold, continue climb-in-hold to 11000.
<p>⚠ Circling Rwy 8 NA at night.</p> <p>⚠ For inop ALS, increase S-ILS 35L Cats A, B, C visibility to 1 7/8 SM.</p> <p>❄ -13°C</p>		

D-ATIS 135.8 363.0	NORCAL APP CON 119.2 279.55 126.3 353.9	RENO Tower 118.7 257.8	GND CON 121.9 348.6
------------------------------	---	----------------------------------	-------------------------------



ELEV 4415	TDZE 4410
HIRL Rwys 17R-35L and 17L-35R REIL Rwys 8, 17L, 26, and 35R MIRL Rwy 8-26	



CATEGORY	A	B	C	D
S-ILS 35L	5062-1 1/2 652 (700-1 1/2)			NA
S-LOC 35L	5120-1	710 (800-1)	5120-2 710 (800-2)	NA
CIRCLING	5340-1 1/4	925 (1000-1 1/4)	6460-3 2045 (2100-3)	NA

SW-4, 14 MAY 2026 to 11 JUN 2026

SW-4, 14 MAY 2026 to 11 JUN 2026