

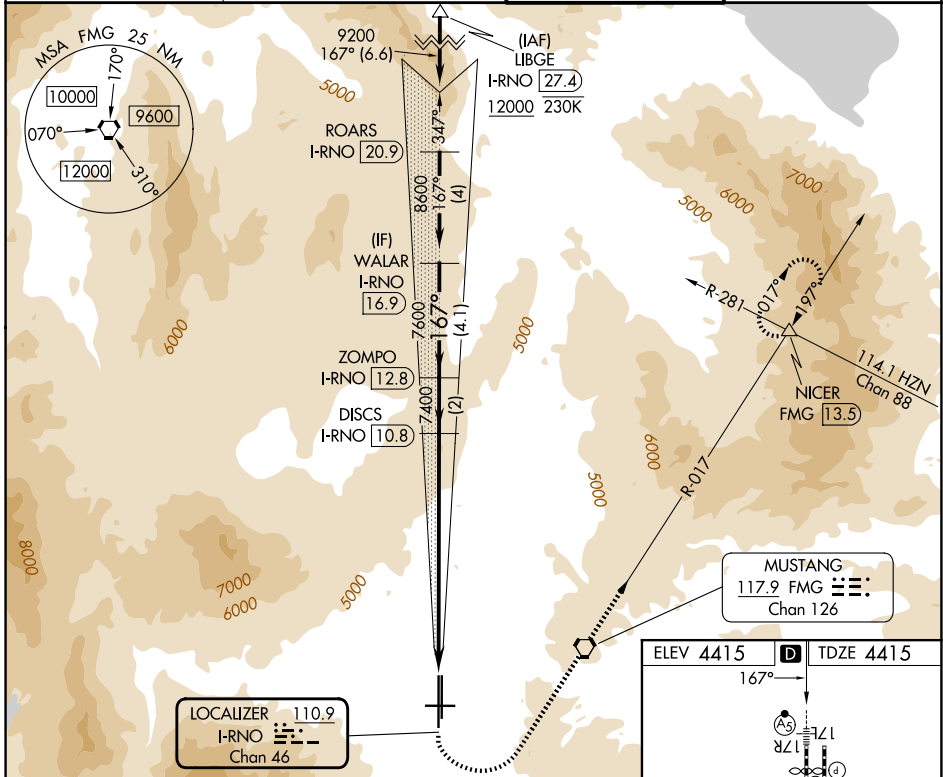
LOC/DME I-RNO 110.9 Chan 46	APP CRS 167°	Rwy Ldg TDZE 10001 4415	Apt Elev 4415
---	------------------------	---	-------------------------

ILS Y RWY 17R

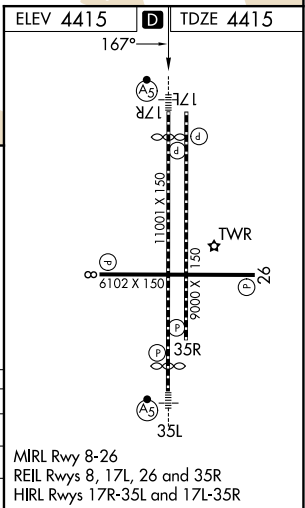
RENO/TAHOE INTL (RNO)

DME required.	MALS R	MISSED APPROACH: Climb to 6300 then climbing left turn to 11000 direct FMG VORTAC and on FMG VORTAC R-017 to NICER INT/FMG 13.5 DME and hold, continue climb-in-hold to 11000. * Missed approach requires minimum climb of 350 feet per NM to 8000. ** Missed approach requires minimum climb of 275 feet per NM to 8000.
# Inop table does not apply. † For inop ALS, increase S-ILS -13°C 17R visibility to 1 1/2 SM.		

D-ATIS 135.8 363.0	NORCAL APP CON 119.2 279.55 126.3 353.9	RENO TOWER 118.7 257.8	GND CON 121.9 348.6
------------------------------	---	----------------------------------	-------------------------------



6300	11000	FMG	NICER	ZOMPO	WALAR
↑	↖	◻	△	I-RNO 12.8	I-RNO 16.9
VGSI and ILS glidepath not coincident (VGSI Angle 3.06/TCH 77).		FMG R-017		DISCS I-RNO 10.8	
				7400	8600
				7400	7600
					GS 3.10° TCH 59
	8.9 NM	2 NM	4.1 NM		
CATEGORY	A	B	C	D	E
S-ILS 17R *†		4915/50	500 (500-1)		
S-ILS 17R **#		5415-4	1000 (1000-4)		
S-ILS 17R #		5915-5	1500 (1500-5)		



MIRL Rwy 8-26
REIL Rwy 8, 17L, 26 and 35R
HIRL Rwy 17R-35L and 17L-35R