

RENO, NEVADA

AL-346 (FAA)

25331

LOC/DME I-RNO 110.9 Chan 46	APP CRS 167°	Rwy Ldg 17R 17L	10001 9000
		TDZE	4415 4415
		Apt Elev	4415 4415

LOC Y RWY 17R

RENO/TAHOE INTL (RNO)

DME required.

⚠ Circling Rwy 8 NA at night. For inop ALS, increase S-LOC 17R* Cat E visibility to 3 SM. Circling NA for Cat E southwest of Rwy 8 and 35L.

⚠ -13°C

#Inop table does not apply to Cats C, D and E.

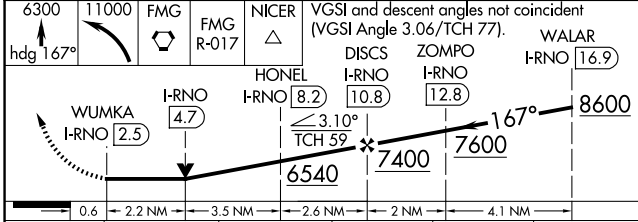
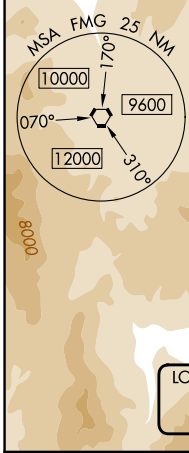
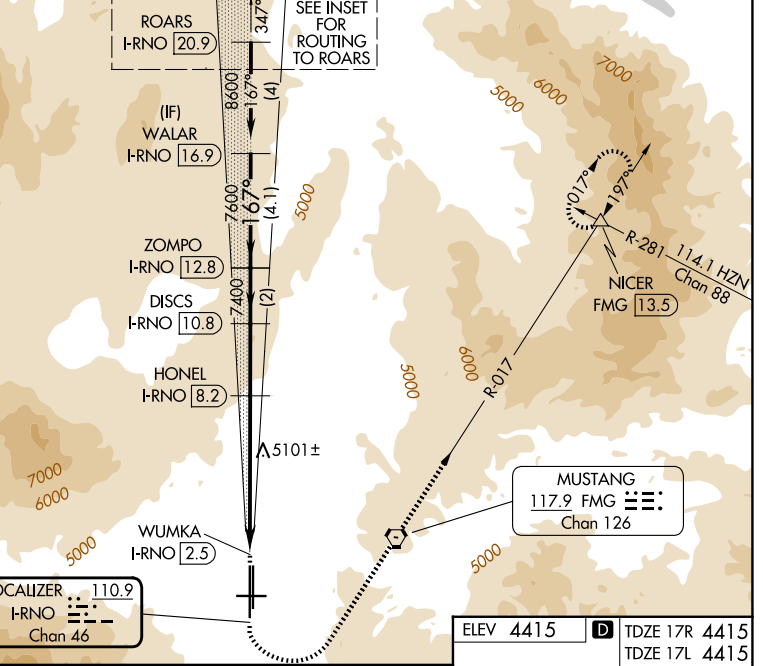
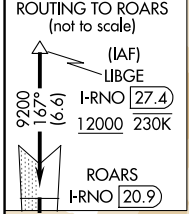
MALS 17R

MISSED APPROACH: Climb to 6300 on heading 167° then climbing left turn 11000 direct FMG VORTAC and on FMG VORTAC R-017 to NICER INT and hold, continue climb-in-hold to 11000.

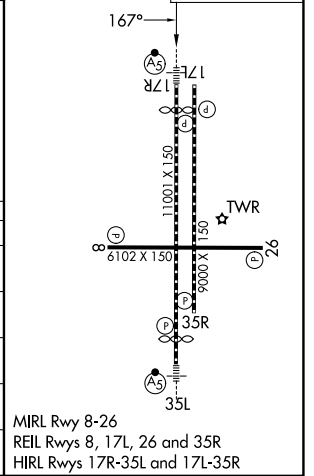
*Missed approach requires minimum climb of 320 feet per NM to 8000.

†Missed approach requires minimum climb of 260 feet per NM to 8000.

D-ATIS 135.8 363.0	NORCAL APP CON 119.2 279.55 126.3 353.9	RENO TOWER 118.7 257.8	GND CON 121.9 348.6
------------------------------	---	----------------------------------	-------------------------------



ELEV 4415	D TDZE 17R 4415
	TDZE 17L 4415



CATEGORY	A	B	C	D	E
S-LOC 17R*	5420/40 1005 (1100-3/4)	5420/55 1005 (1100-1)	5420-2 1/2	1005 (1100-2 1/2)	
SIDESTEP 17L*#	5420-1 1/4 1005 (1100-1 1/4)	5420-1 1/2 1005 (1100-1 1/2)	5420-3	1005 (1100-3)	
S-LOC 17RT#	5720/40 1305 (1400-3/4)	5720/55 1305 (1400-1)	5720-3	1305 (1400-3)	
S-LOC 17R#	5920/40 1505 (1600-3/4)	5920/55 1505 (1600-1)	5920-3	1505 (1600-3)	6180-3 1765 (1800-3)
CIRCLING	5920-1 1/4 1505 (1600-1 1/4)	5920-1 1/2 1505 (1600-1 1/2)	6480-3	2065 (2100-3)	6700-3 2285 (2300-3)

RENO, NEVADA
Amdt 1 03NOV22

39°30'N-119°46'W

RENO/TAHOE INTL (RNO) LOC Y RWY 17R

SW-4, 14 MAY 2026 to 11 JUN 2026

SW-4, 14 MAY 2026 to 11 JUN 2026