

RNAV (RNP) W RWY 35L

RENO/TAHOE INTL (RNO)

APP CRS 347°	Rwy Ldg TDZE Apt Elev	10011 4410 4415
------------------------	-----------------------------	--

RNP AR APCH - GPS.

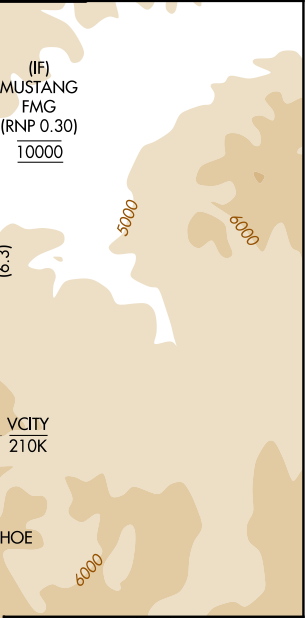
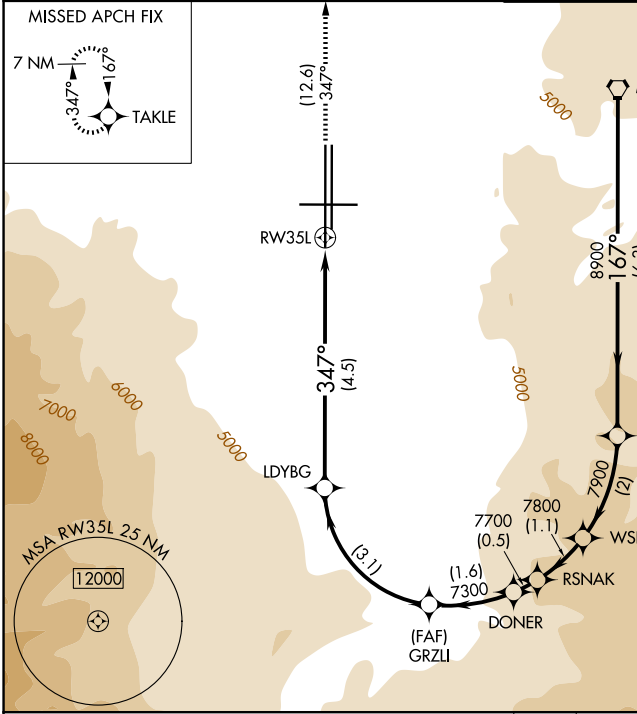
⚠ For uncompensated Baro-VNAV systems, procedure NA below -9°C or above 35°C.

❄ -13°C

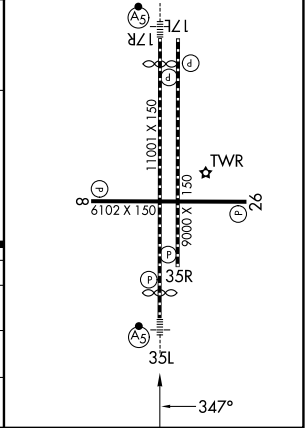
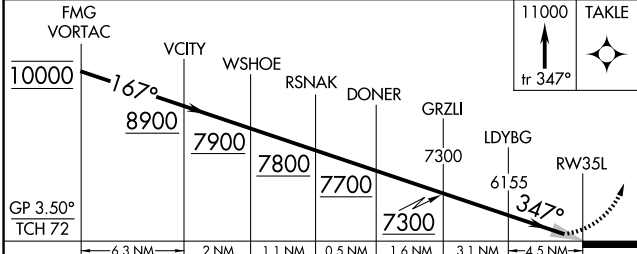
MALSRL

MISSED APPROACH: Climb to 11000 on track 347° to TAKLE and hold, continue climb-in-hold to 11000. *Missed approach requires minimum climb of 300 feet per NM to 7140.

D-ATIS 135.8 363.0	NORCAL APP CON 119.2 279.55 126.3 353.9	RENO TOWER 118.7 257.8	GND CON 121.9 348.6
------------------------------	---	----------------------------------	-------------------------------



ELEV 4415	D TDZE 4410
HIRL Rwys 17R-35L and 17L-35R	
REIL Rwys 8, 17L, 26, and 35R	
MIRL Rwy 8-26	



CATEGORY	A	B	C	D
RNP 0.10 DA*		4736-1/2	326 (400-1/2)	
RNP 0.30 DA		5349-2	939 (1000-2)	

AUTHORIZATION REQUIRED

SW-4, 14 MAY 2026 to 11 JUN 2026

SW-4, 14 MAY 2026 to 11 JUN 2026