

RNAV (RNP) Y RWY 17R

RENO/TAHOE INTL (RNO)

APP CRS 167°	Rwy Ldg TDZE Apt Elev	10001 4415 4415
------------------------	-----------------------------	--

RNP AR APCH - GPS, RF, min RNP 0.50.
Authorization required.

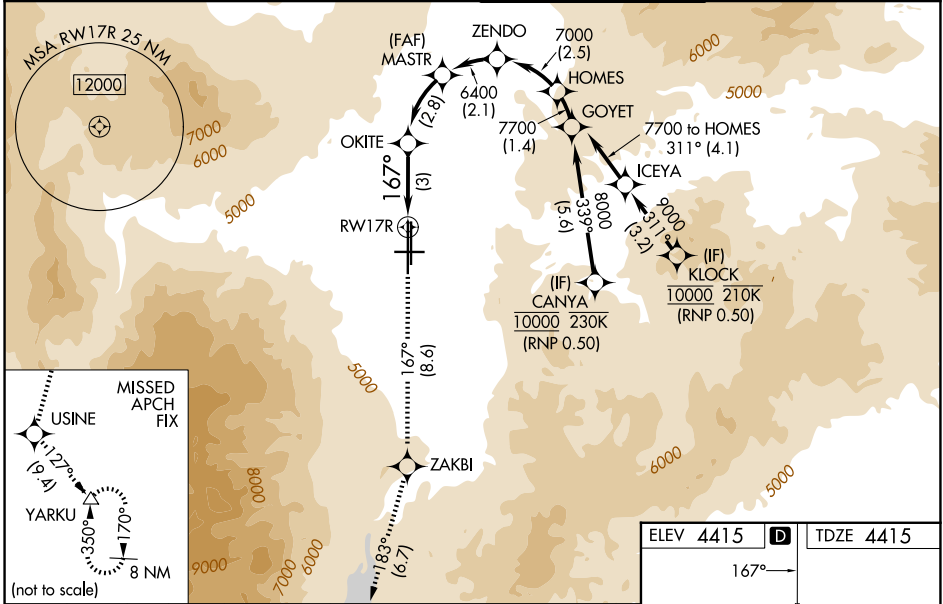
For uncompensated Baro-VNAV systems, procedure NA below -10°C or above 54°C. For inop ALS, increase RNP 0.1 DA all Cats visibility to RVR 5500, increase RNP 0.2 DA all Cats visibility to 1½ SM, increase RNP 0.3 DA all Cats visibility to 1% SM.

MALSRL

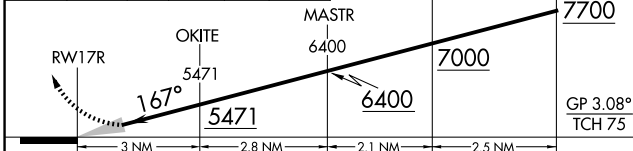
MISSED APPROACH: Climb to 13000 on track 167° to ZAKBI and on track 183° to USINE and on track 127° to YARKU and hold, continue climb-in-hold to 13000.

- * Missed approach requires minimum climb of 223 feet per NM to 7200.
- # Missed approach requires minimum climb of 267 feet per NM to 7200.
- † Missed approach requires minimum climb of 209 feet per NM to 7200.
- ** Missed approach requires minimum climb of 260 feet per NM to 7200.

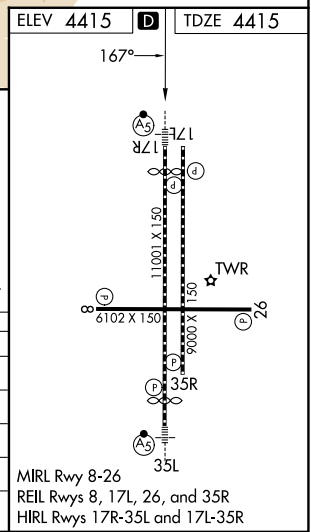
D-ATIS 135.8 363.0	NORCAL APP CON 119.2 279.55 126.3 353.9	RENO TOWER 118.7 257.8	GND CON 121.9 348.6
------------------------------	---	----------------------------------	-------------------------------



13000	ZAKBI	USINE	YARKU	See planview for multiple IF locations.
tr 167°	tr 183°	tr 127°	△	



CATEGORY	A	B	C	D
RNP 0.10 DA *		4761/30	346 (400-¾)	
RNP 0.19 DA #		4811/35	396 (400-¾)	
RNP 0.20 DA †		4994-1¼	579 (600-1¼)	
RNP 0.30 DA **		5094-1½	679 (700-1½)	



AUTHORIZATION REQUIRED

SW-4, 14 MAY 2026 to 11 JUN 2026

SW-4, 14 MAY 2026 to 11 JUN 2026