

# RNAV (RNP) Z RWY 17R

RENO/TAHOE INTL (RNO)

APP CRS <b>167°</b>	Rwy Ldg TDZE Apt Elev	<b>10001</b> <b>4415</b> <b>4415</b>
------------------------	-----------------------------	--------------------------------------------

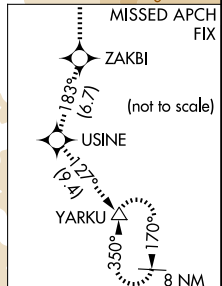
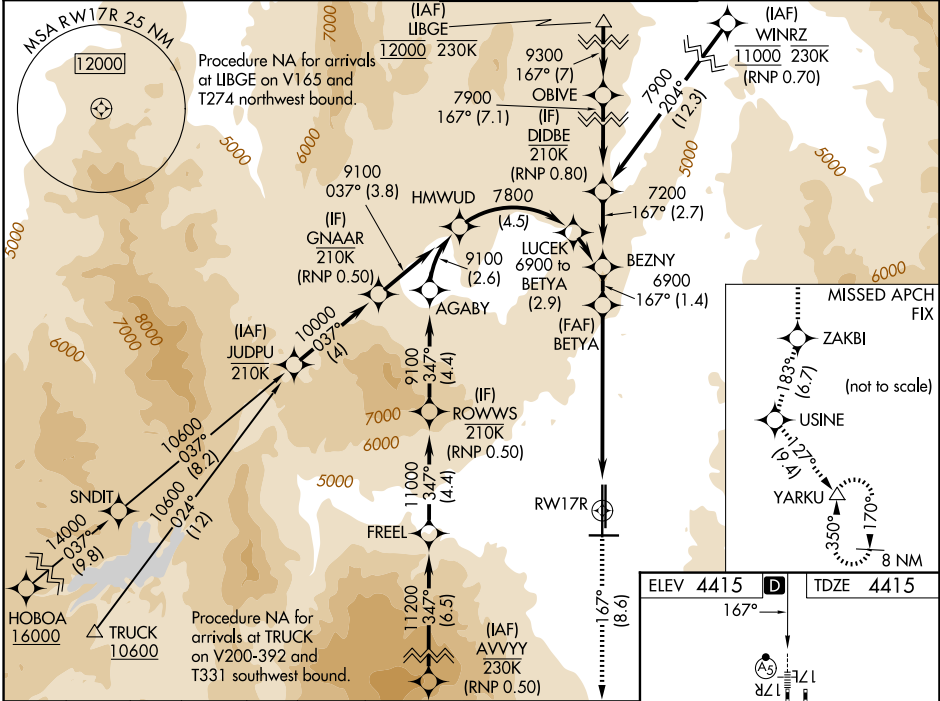
RNP AR APCH - GPS. Authorization required. AGABY, HMWUD, LUCEK: RF. From AVVVY: min RNP 0.50, from WINRZ: min RNP 0.70, from ROWWS: min RNP 0.50, from DIDBE: min RNP 0.80, from GNAAR min RNP 0.50.



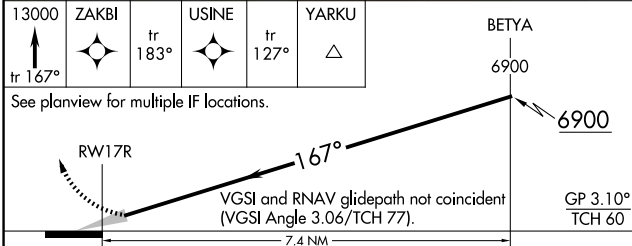
MISSED APPROACH: Climb to 13000 on track 167° to ZAKBI and on track 183° to USINE and on track 127° to YARKU and hold, continue climb-in-hold to 13000. \*Missed approach requires minimum climb of 267 feet per NM to 7200. # Missed approach requires minimum climb of 259 feet per NM to 7200.

▼ For uncompensated Baro-VNAV systems, procedure NA below -10°C or above 54°C. For inop ALS, increase RNP 0.30 DA visibility all Cats to 1½ SM.

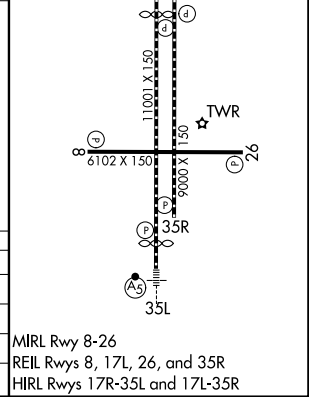
D-ATIS <b>135.8 363.0</b>	NORCL APP CON <b>119.2 279.55 126.3 353.9</b>	RENO TOWER <b>118.7 257.8</b>	GND CON <b>121.9 348.6</b>
------------------------------	--------------------------------------------------	----------------------------------	-------------------------------



ELEV 4415	TDZE 4415
-----------	-----------



CATEGORY	A	B	C	D
RNP 0.10 DA *		4755/26	340 (400-½)	
RNP 0.17 DA #		4805/35	390 (400-¾)	
RNP 0.30 DA		5095-1½	680 (700-1½)	



**AUTHORIZATION REQUIRED**

MIRL Rwy 8-26  
REIL Rwys 8, 17L, 26, and 35R  
HIRL Rwys 17R-35L and 17L-35R

SW-4, 14 MAY 2026 to 11 JUN 2026

SW-4, 14 MAY 2026 to 11 JUN 2026