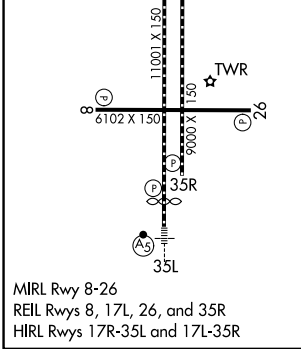
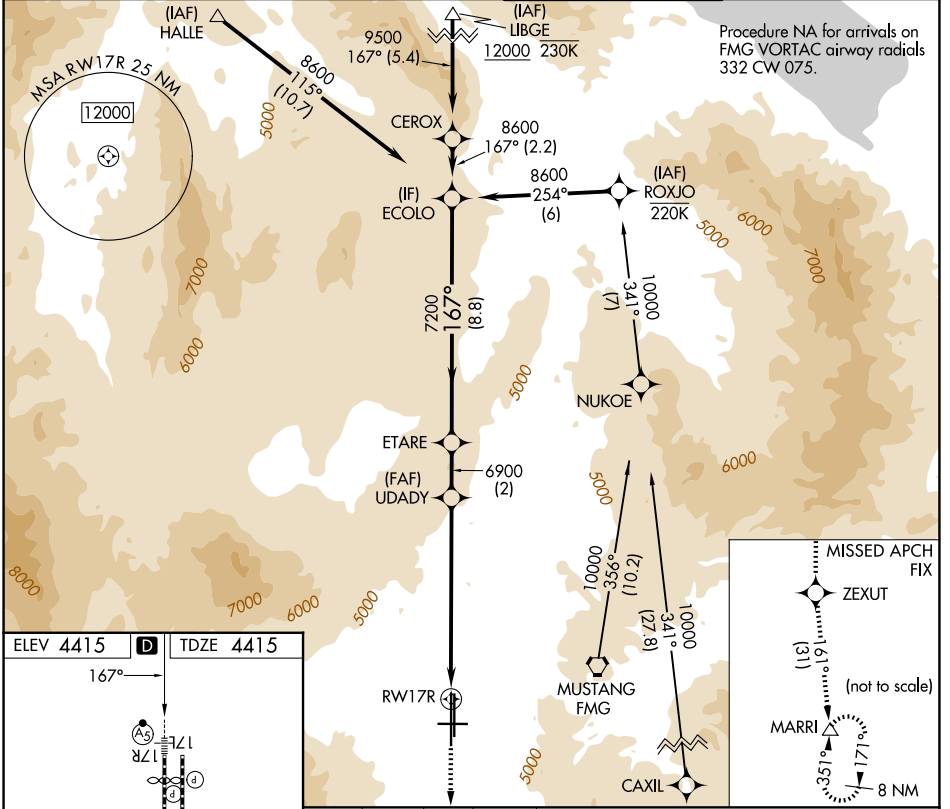


WAAS CH 78309 W17B	APP CRS 167°	Rwy Ldg 10001 TDZE 4415 Apt Elev 4415
--	------------------------	--

RNAV (GPS) X RWY 17R

RENO/TAHOE INTL (RNO)

RNP APCH - GPS.		MALSR	MISSED APPROACH: Climb to 13000 direct ZEXUT and on track 161° to MARRI and hold.	
<p>For inop ALS, increase LPV all Cats visibility to 2 1/2 SM. Inop table does not apply to LNAV all Cats.</p>				
D-ATIS 135.8 363.0	NORCAL APP CON 119.2 279.55 126.3 353.9	RENO TOWER 118.7 257.8	GND CON 121.9 348.6	



13000	ZEXUT	MARRI	VGSI and RNAV glidepath not coincident (VGSI Angle 3.06/TCH 77).	
↑	✧	△	UDADY	ETARE
	tr 161°		6900	8600
			5.2 NM to RWY 17R	7200
			5.2 NM	2.1 NM
			2 NM	8.8 NM
CATEGORY	A	B	C	D
LPV DA	5239-1 7/8 824 (900-1 7/8)			
LNAV MDA	6200/40 1785 (1800-3/4)	6200/55 1785 (1800-1)	6200-3	1785 (1800-3)

SW-4, 14 MAY 2026 to 11 JUN 2026

SW-4, 14 MAY 2026 to 11 JUN 2026