

RNAV (GPS) X RWY 35R

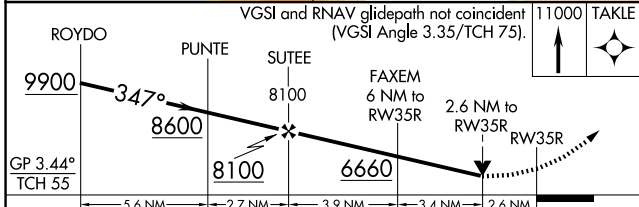
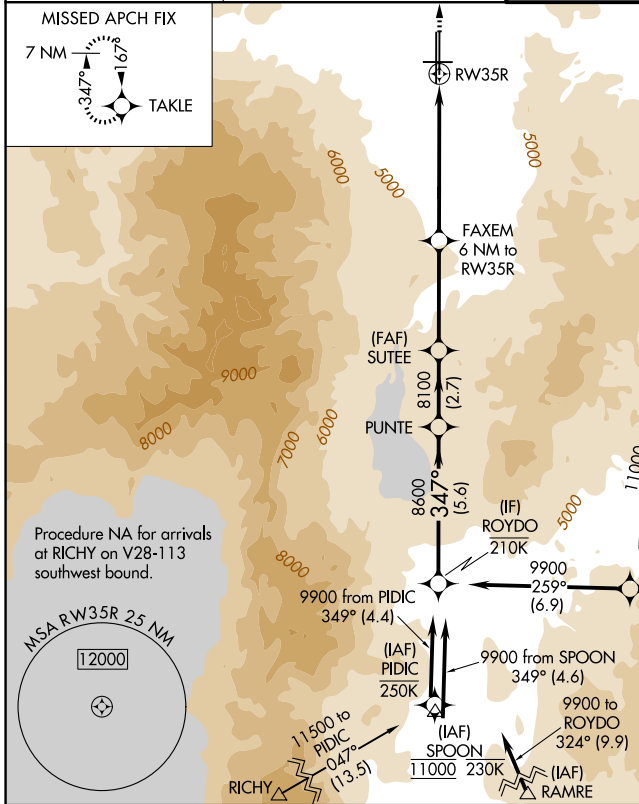
RENO/TAHOE INTL (RNO)

APP CRS 347°	Rwy Ldg TDZE Apt Elev	9000 4408 4415
------------------------	-----------------------------	---

RNP APCH - GPS.
 Baro-VNAV NA. Rwy 35R helicopter visibility reduction below ¾ SM NA. Circling Rwy 8
 -13°C
 NA at night.

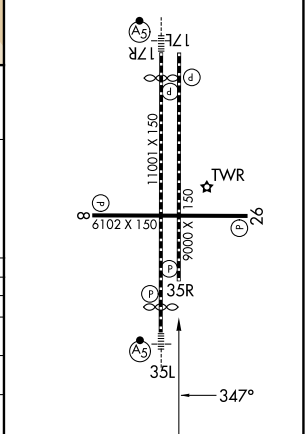
MISSED APPROACH: Climb to 11000 direct TAKLE and hold, continue climb-in-hold to 11000.
 *Missed approach requires minimum climb of 250 feet per NM to 5600.

D-ATIS 135.8 363.0	NORCAL APP CON 119.2 279.55 126.3 353.9	RENO TOWER 118.7 257.8	GND CON 121.9 348.6
------------------------------	---	----------------------------------	-------------------------------



ELEV 4415	TDZE 4408
HIRL Rwy 17R-35L and 17L-35R	
REIL Rwy 8, 17L, 26, and 35R	
MIRL Rwy 8-26	

CATEGORY	A	B	C	D
LNVA/VNVA DA	5474-4 1066 (1100-4)			
LNVA MDA*	5400-1¼ 992 (1000-1¼)	5400-1½ 992 (1000-1½)	5400-3	992 (1000-3)
LNVA MDA	5540-1¼ 1132 (1200-1¼)	5540-1½ 1132 (1200-1½)	5540-3	1132 (1200-3)
CIRCLING	5540-1¼ 1125 (1200-1¼)	5540-1½ 1125 (1200-1½)	6460-3	2045 (2100-3)



SW-4, 14 MAY 2026 to 11 JUN 2026

SW-4, 14 MAY 2026 to 11 JUN 2026