

WAAS CH 40409 W35B	APP CRS 347°	Rwy Ldg TDZE 4408 Apt Elev 4415
----------------------------------------	------------------------	-----------------------------------------------------

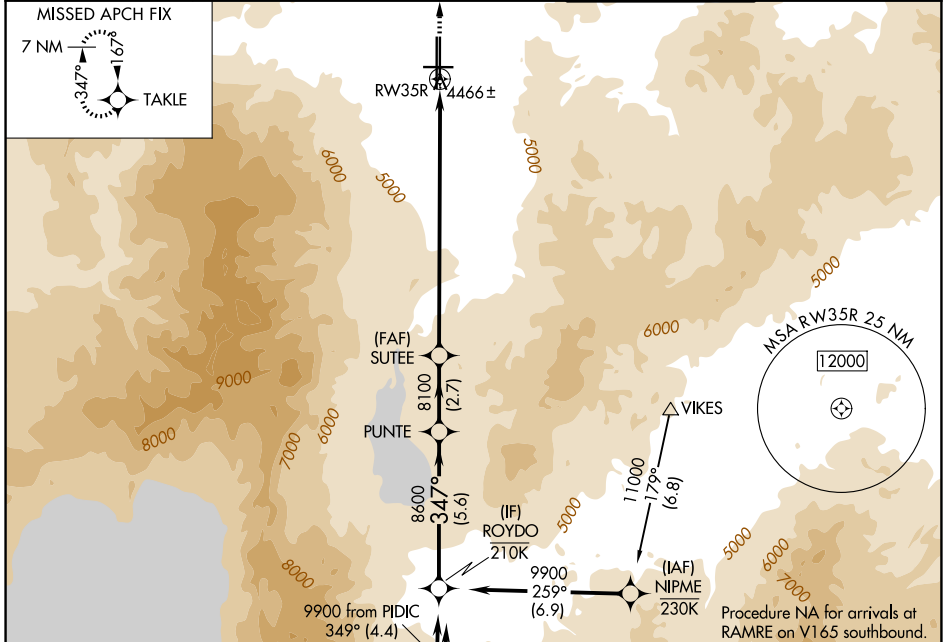
RNAV (GPS) Y RWY 35R

RENO/TAHOE INTL (RNO)

RNP APCH - GPS.
 NA Rwy 35R helicopter visibility reduction below ¼ SM NA.
 -13°C

MISSED APPROACH: Climb to 11000 direct TAKLE and hold, continue climb-in-hold to 11000.
 *Missed approach requires minimum climb of 250 feet per NM to 6100.

D-ATIS 135.8 363.0	NORCAL APP CON 119.2 279.55 126.3 353.9	RENO TOWER 118.7 257.8	GND CON 121.9 348.6
------------------------------	---------------------------------------------------	----------------------------------	-------------------------------



ROYDO	PUNTE	SUTEE	TAKLE
9900	8600	8100	11000
GP 3.44°	8100		
TCH 55			
	5.6 NM	2.7 NM	10 NM

VGSI and RNAV glidepath not coincident (VGSI Angle 3.35/TCH 75).

