

# SPARKS ONE DEPARTURE (OBSTACLE)

AL-346 (FAA)

RENO/TAHOE INTL (RNO)  
RENO, NEVADA

## TAKEOFF MINIMUMS

Rwy 8: NA - Terrain.

Rwy 17L: 600-1 $\frac{3}{8}$  with minimum climb of 415' per NM to 8700 or standard with minimum climb of 745' per NM to 7200, or 3200-3 for VCOA.

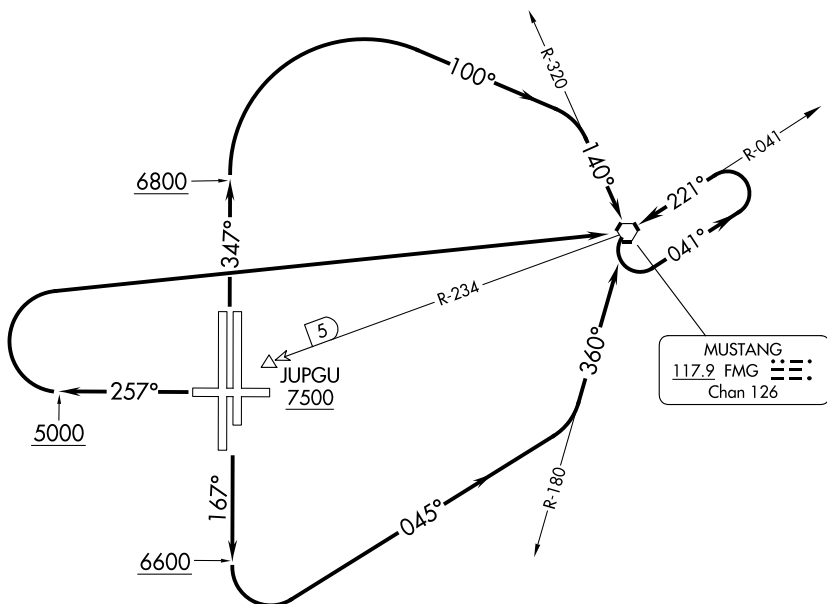
Rwy 17R: Standard with minimum climb of 420' per NM to 8700, or 3200-3 for VCOA.

Rwy 26: Standard with minimum climb of 485' per NM to 7900, or 3200-3 for VCOA.

Rwy 35L: Standard with minimum climb of 375' per NM to 8600, or 3200-3 for VCOA.

Rwy 35R: 400-1 $\frac{1}{2}$  with a minimum climb of 270' per NM to 8600 or standard with a minimum climb of 420' per NM to 7400, or 3200-3 for VCOA.

NORCAL DEP CON  
119.2 279.55 (17L/R)  
126.3 353.9 (Rwys 26, 35L/R)



NOTE: Chart not to scale.

(CONTINUED ON FOLLOWING PAGE)

## DEPARTURE ROUTE DESCRIPTION

**TAKEOFF RUNWAYS 17L/R:** Climb on heading 167° to 6600, then climbing left turn heading 045° to intercept FMG VORTAC R-180 to FMG VORTAC, continue climb in FMG VORTAC holding pattern to cross FMG VORTAC at or above MEA/MCA for route of flight.

**TAKEOFF RUNWAY 26:** Climb on heading 257° to 5000, then climbing right turn direct FMG VORTAC, continue climb in FMG VORTAC holding pattern to cross FMG VORTAC at or above MEA/MCA for route of flight.

**TAKEOFF RUNWAYS 35L/R:** Climb on heading 347° to 6800, then climbing right turn heading 100° to intercept FMG VORTAC R-320 to FMG VORTAC, continue climb in FMG VORTAC holding pattern to cross FMG VORTAC at or above MEA/MCA for route of flight.

**VCOA ALL RUNWAYS:** Obtain ATC approval for VCOA when requesting IFR clearance.

Climb in visual conditions to cross JUPGU (FMG R-234/5 DME) at or above 7500 on FMG R-234 to FMG VORTAC, then continue climb in FMG VORTAC holding pattern to cross FMG VORTAC at or above MEA/MCA for route of flight.

# SPARKS ONE DEPARTURE (OBSTACLE)

SW-4, 14 MAY 2026 to 11 JUN 2026

SW-4, 14 MAY 2026 to 11 JUN 2026

TAKEOFF OBSTACLE NOTES

- Rwy 17L: Building 78' from DER, 262' left of centerline, 8' AGL/4413' MSL.
- Antenna 130' from DER, 379' right of centerline, 41' AGL/4444' MSL.
- Tree 719' from DER, 555' left of centerline, 4434' MSL.
- Tree 1055' from DER, 132' left of centerline, 4435' MSL.
- Pole 1108' from DER, 487' left of centerline, 34' AGL/4445' MSL.
- Pole, building beginning 1331' from DER, 458' left of centerline, up to 34' AGL/4446' MSL.
- Pole 1428' from DER, 229' left of centerline, 36' AGL/4449' MSL.
- Tree 1843' from DER, 132' left of centerline, 4456' MSL.
- Tree 1879' from DER, 126' left of centerline, 4466' MSL.
- Tower 2389' from DER, 975' left of centerline, 55' AGL/4469' MSL.
- Tower 2747' from DER, 853' left of centerline, 66' AGL/4482' MSL.
- Terrain 4845' from DER, 1693' left of centerline, 4546' MSL.
- Terrain 5161' from DER, 1451' left of centerline, 4547' MSL.
- Terrain beginning 5253' from DER, 1698' left of centerline, up to 4776' MSL.
- Terrain 5470' from DER, 1838' left of centerline, 4846' MSL.
- Terrain beginning 5524' from DER, 1371' left of centerline, up to 4919' MSL.
- Terrain beginning 5702' from DER, 1691' left of centerline, up to 4926' MSL.
- Terrain beginning 5874' from DER, 1768' left of centerline, up to 4953' MSL.
- Terrain 1 NM from DER, 1981' left of centerline, 4837' MSL.
- Rwy 17R: Lighting 10' from DER, 85' left of centerline, 1' AGL/4415' MSL.
- Lighting 10' from DER, 85' right of centerline, 1' AGL/4415' MSL.
- Tree 746' from DER, 379' left of centerline, 4435' MSL.
- Trees beginning 1156' from DER, 772' left of centerline, up to 4456' MSL.
- Tree 1306' from DER, 840' left of centerline, 4457' MSL.
- Trees beginning 1409' from DER, 818' left of centerline, up to 4466' MSL.
- Trees beginning 1593' from DER, 658' left of centerline, up to 4474' MSL.
- Tree 1873' from DER, 936' left of centerline, 4475' MSL.
- Tree 2164' from DER, 653' left of centerline, 4478' MSL.
- Trees beginning 2783' from DER, 172' right of centerline, up to 4501' MSL.
- Tree 3135' from DER, 590' right of centerline, 4507' MSL.
- Tree 3285' from DER, 504' right of centerline, 4510' MSL.
- Rwy 26: Lighting 9' from DER, 54' left of centerline, 1' AGL/4410' MSL.
- Lighting 10' from DER, 54' right of centerline, 1' AGL/4410' MSL.
- Pole 119' from DER, 464' left of centerline, 32' AGL/4440' MSL.
- Pole, transmission line, fence beginning 142' from DER, 270' right of centerline, up to 30' AGL/4438' MSL.
- Pole 499' from DER, 466' left of centerline, 39' AGL/4452' MSL.
- Pole 1274' from DER, 469' left of centerline, 39' AGL/4458' MSL.
- Pole 1369' from DER, 387' right of centerline, 27' AGL/4447' MSL.
- Sign 1501' from DER, 206' right of centerline, 30' AGL/4448' MSL.
- Tree 1618' from DER, 42' right of centerline, 4473' MSL.
- Signs, trees beginning 1656' from DER, 66' left of centerline, up to 59' AGL/4482' MSL.
- Tree 1663' from DER, 15' right of centerline, 4475' MSL.
- Trees beginning 1664' from DER, 16' right of centerline, up to 4484' MSL.
- Tree 1878' from DER, 28' left of centerline, 4483' MSL.
- Trees beginning 1913' from DER, 162' left of centerline, up to 4484' MSL.
- Trees beginning 1916' from DER, 20' left of centerline, up to 4487' MSL.
- Trees beginning 2053' from DER, 25' left of centerline, up to 4497' MSL.
- Tree 2099' from DER, 206' right of centerline, 4490' MSL.
- Trees beginning 2102' from DER, 12' right of centerline, up to 4493' MSL.
- Trees beginning 2255' from DER, 45' right of centerline, up to 4500' MSL.
- Trees beginning 2268' from DER, 5' left of centerline, up to 4506' MSL.
- Pole, tree beginning 2635' from DER, 114' right of centerline, up to 100' AGL/4527' MSL.
- Antenna 3413' from DER, 298' left of centerline, 80' AGL/4514' MSL.

(CONTINUED ON FOLLOWING PAGE)

SW-4, 14 MAY 2026 to 11 JUN 2026

SW-4, 14 MAY 2026 to 11 JUN 2026

(CONTINUED)

TAKEOFF OBSTACLE NOTES

- Rwy 35L: Lighting 10' from DER, 85' left of centerline, 2' AGL/4416' MSL.
- Lighting 10' from DER, 86' right of centerline, 2' AGL/4416' MSL.
- Sign 40' from DER, 437' right of centerline, 4' AGL/4417' MSL.
- Lighting 999' from DER, on centerline, 22' AGL/4440' MSL.
- Antenna 1029' from DER, 49' left of centerline, 22' AGL/4441' MSL.
- Antenna 1029' from DER, 49' right of centerline, 23' AGL/4441' MSL.
- Pole 1176' from DER, 629' right of centerline, 32' AGL/4451' MSL.
- Tree 1193' from DER, 400' left of centerline, 4454' MSL.
- Trees beginning 1216' from DER, 227' left of centerline, up to 4476' MSL.
- Tree 1229' from DER, 349' right of centerline, 4458' MSL.
- Trees beginning 1267' from DER, 207' right of centerline, up to 4465' MSL.
- Tree 1974' from DER, 898' right of centerline, 4469' MSL.
- Tree 2326' from DER, 938' right of centerline, 4473' MSL.
- Tree 2350' from DER, 885' right of centerline, 4474' MSL.
- Trees beginning 2489' from DER, 178' right of centerline, up to 4493' MSL.
- Trees, poles beginning 2528' from DER, 16' right of centerline, up to 4498' MSL.
- Trees beginning 2789' from DER, 69' left of centerline, up to 4490' MSL.
- Trees beginning 2877' from DER, 292' left of centerline, up to 4492' MSL.
- Rwy 35R: Sign 40' from DER, 262' left of centerline, 4' AGL/4417' MSL.
- Building 87' from DER, 272' right of centerline, 7' AGL/4420' MSL.
- Lighting 999' from DER, 699' left of centerline, 22' AGL/4440' MSL.
- Antennas beginning 1028' from DER, 649' left of centerline, up to 22' AGL/4441' MSL.
- Poles beginning 1066' from DER, 165' right of centerline, up to 40' AGL/4458' MSL.
- Pole 1176' from DER, 70' left of centerline, 32' AGL/4451' MSL.
- Tree 1229' from DER, 349' left of centerline, 4458' MSL.
- Tree 1267' from DER, 492' left of centerline, 4465' MSL.
- Trees beginning 1711' from DER, 255' right of centerline, up to 4466' MSL.
- Tree 1973' from DER, 198' right of centerline, 4469' MSL.
- Trees beginning 1991' from DER, 186' right of centerline, up to 4491' MSL.
- Trees, pole beginning 2489' from DER, 361' right of centerline, up to 4493' MSL.
- Tree 2505' from DER, 520' left of centerline, 4480' MSL.
- Trees, pole beginning 2528' from DER, 201' left of centerline, up to 4498' MSL.
- Pole 2815' from DER, 531' right of centerline, 82' AGL/4497' MSL.

SW-4, 14 MAY 2026 to 11 JUN 2026

SW-4, 14 MAY 2026 to 11 JUN 2026