

TARVR TWO ARRIVAL (RNAV)  
(TARVR.TARVR2) 19MAY26

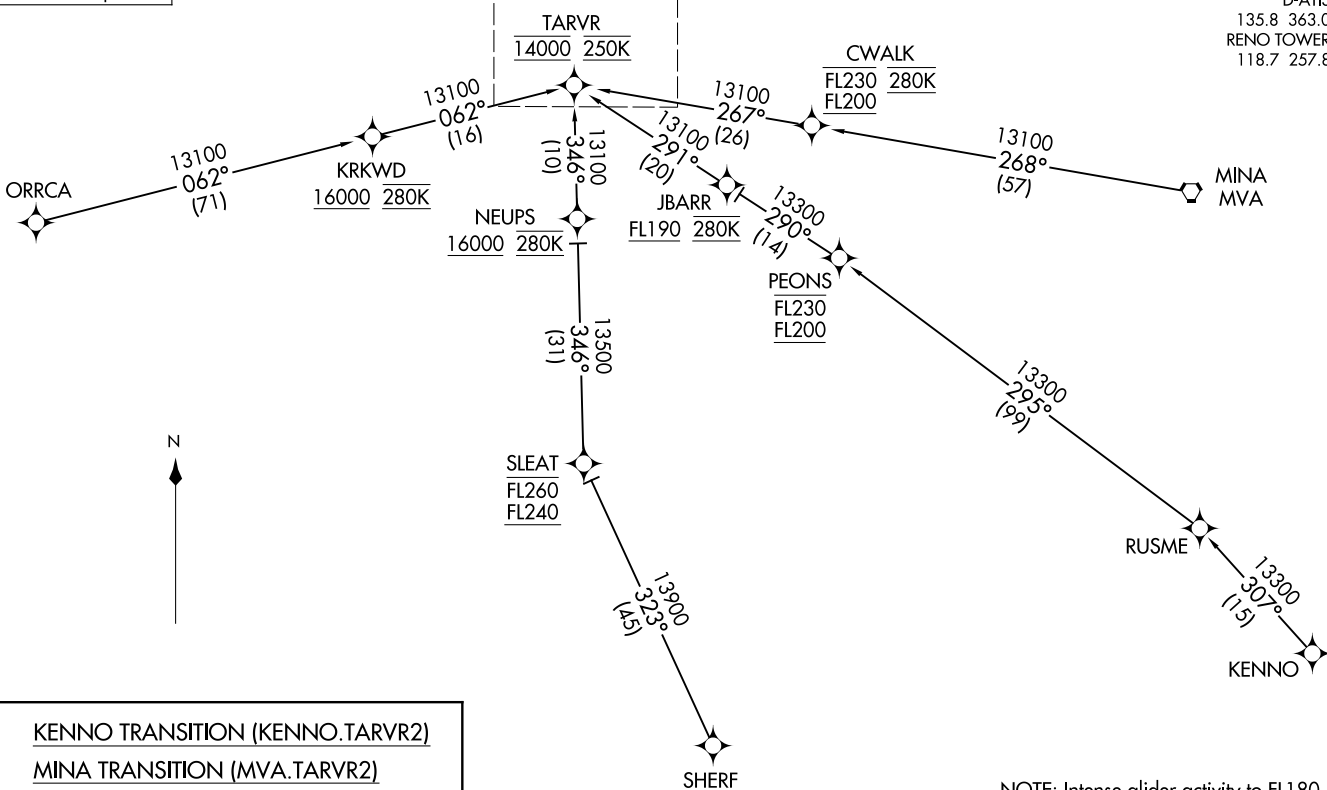
Transition Routes

RENO, NEVADA  
RENO/TAHOE INTL (RNT0)

RNAV 1 - GPS.  
RADAR required.

See following page  
for arrival routes

NORCAL APP CON  
119.2 279.55  
D-ATIS  
135.8 363.0  
RENO TOWER  
118.7 257.8



(TARVR.TARVR2) 26078  
TARVR TWO ARRIVAL (RNAV)

Transition Routes

AL-346 (FAA)  
RENO/TAHOE INTL (RNT0)  
RENO, NEVADA

- KENNO TRANSITION (KENNO.TARVR2)
- MINA TRANSITION (MVA.TARVR2)
- ORRCA TRANSITION (ORRCA.TARVR2)
- SHERF TRANSITION (SHERF.TARVR2)

(CONTINUED ON FOLLOWING PAGE)

NOTE: Intense glider activity to FL180.  
NOTE: GPS required.  
NOTE: Chart not to scale.

(TARVR.TARVR2) 26078

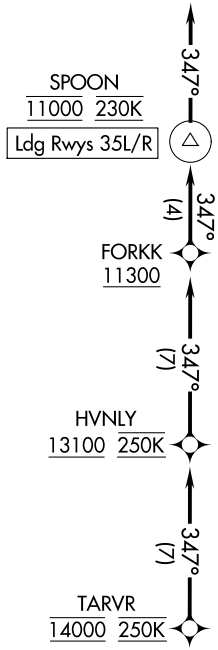
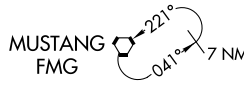
AL-346 (FAA)

RENO/TAHOE INTL (RNO)  
RENO, NEVADA

# TARVR TWO ARRIVAL (RNAV) Arrival Routes

NORCAL APP CON  
119.2 279.55  
D-ATIS  
135.8 363.0  
RENO TOWER  
118.7 257.8

RNAV 1 - GPS.  
RADAR required.



NOTE: Intense glider activity to FL180.

NOTE: GPS required.

NOTE: Chart not to scale.

## ARRIVAL ROUTE DESCRIPTION

From TARVR on track 347° to cross HVNLY at or above 13100 and at 250K.

LANDING RUNWAYS 35L/R: From HVNLY on track 347° to cross FORKK at or above 11300, then on track 347° to cross SPOON at 11000 and at 230K, then on track 347°. Expect assigned instrument approach for Rwy 35L/R or RADAR vectors to final approach course.

TARVR TWO ARRIVAL (RNAV) Arrival Routes

RENO, NEVADA  
RENO/TAHOE INTL (RNO)

(TARVR.TARVR2) 19MAR26

SW-4, 14 MAY 2026 to 11 JUN 2026

SW-4, 14 MAY 2026 to 11 JUN 2026