

VORTAC FMG <b>117.9</b> Chan <b>126</b>	APP CRS <b>239°</b>	Rwy Ldg TDZE Apt Elev <b>N/A</b> <b>4415</b>
---	------------------------	---

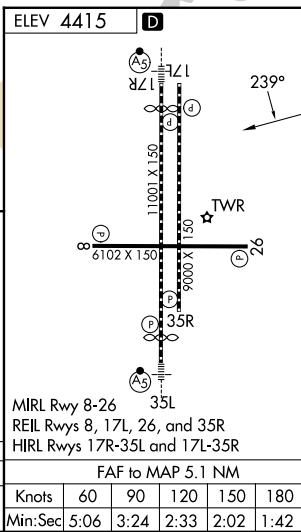
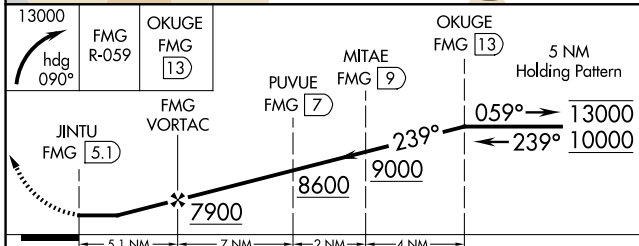
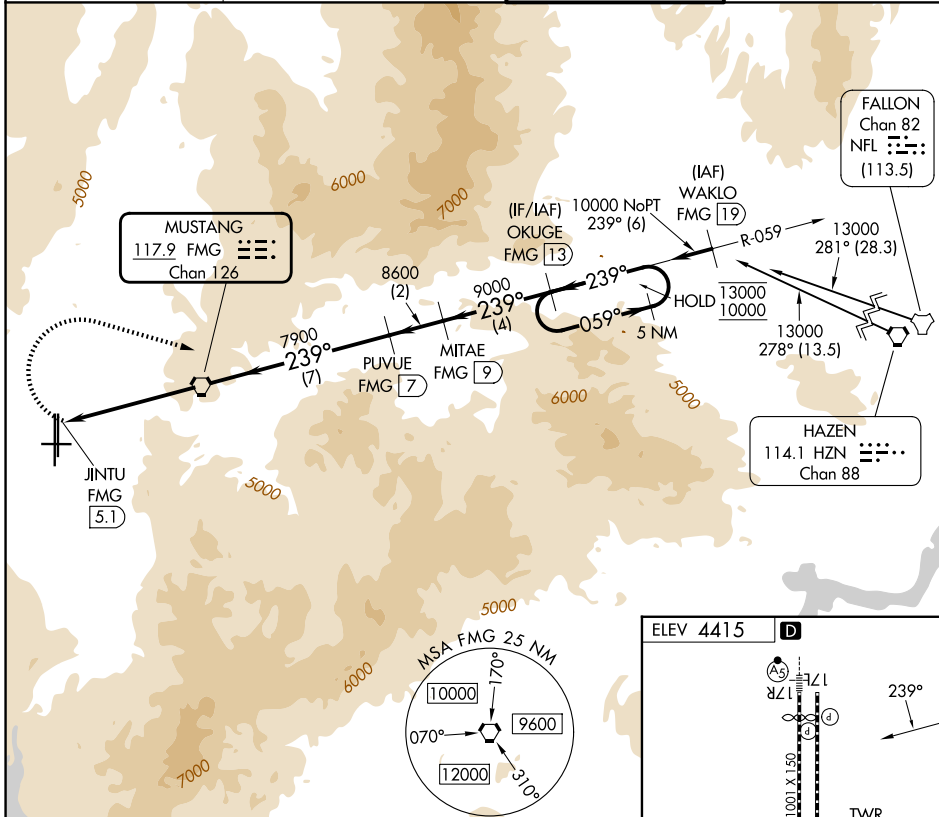
# TACAN-F

RENO/TAHOE INTL (RNO)

**⚠** Circling NA for Cat E south of Rwy 8 and west of 35L. Circling Rwy 8 NA at night. Approaches RADAR monitored by NORCAL APP CON. Arrivals from east and aircraft on missed approach may be vectored to final. Circling NA for Cat E to Rwys 8 and 26.

**MISSED APPROACH:** Climbing right turn to 13000 on heading 090° and FMG R-059 to OKUGE/13 DME and hold, continue climb-in-hold to 13000.

D-ATIS <b>135.8 363.0</b>	NORCAL APP CON <b>119.2 279.55 126.3 353.9</b>	RENO TOWER <b>118.7 257.8</b>	GND CON <b>121.9 348.6</b>
------------------------------	---	----------------------------------	-------------------------------



CATEGORY	FAF to MAP 5.1 NM					
CIRCLING	A	B	C	D	E	
	6220-1¼ 1805 (1900-1¼)	6220-1½ 1805 (1900-1½)	6460-3	2045	(2100-3)	
	Knots	60	90	120	150	180
	Min:Sec	5:06	3:24	2:33	2:02	1:42

SW-4, 14 MAY 2026 to 11 JUN 2026

SW-4, 14 MAY 2026 to 11 JUN 2026