

# COLIN EIGHT DEPARTURE

ATIS 119.15 263.025  
CLNC DEL  
127.55 348.6  
GND CON  
121.9 348.6  
RICHMOND TOWER  
121.1 257.8  
POTOMAC DEP CON  
126.4 282.375

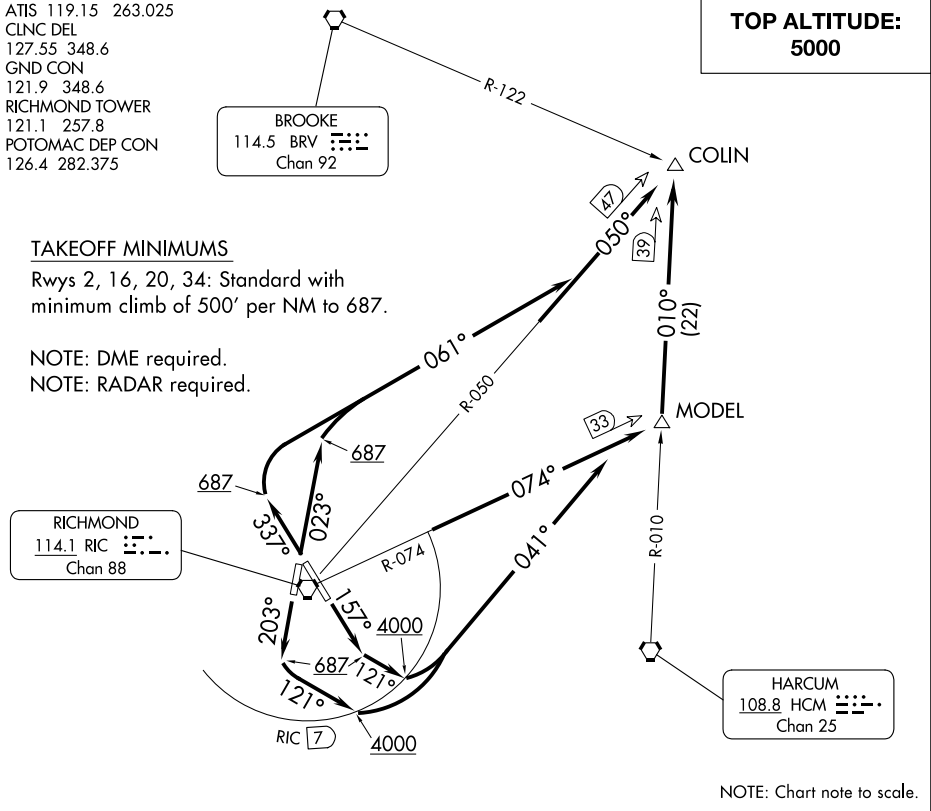
BROOKE  
114.5 BRV  
Chan 92

**TOP ALTITUDE:  
5000**

### TAKEOFF MINIMUMS

Rwys 2, 16, 20, 34: Standard with minimum climb of 500' per NM to 687.

NOTE: DME required.  
NOTE: RADAR required.



NOTE: Chart note to scale.

NE-3, 14 MAY 2026 to 11 JUN 2026

NE-3, 14 MAY 2026 to 11 JUN 2026



## DEPARTURE ROUTE DESCRIPTION

**TAKEOFF RUNWAY 2:** Climb heading 023° to 687, then climbing right turn heading 061° to intercept RIC VORTAC R-050 to COLIN INT/RIC 47 DME, thence . . .

**TAKEOFF RUNWAY 16:** Climb heading 157° to 687, then climbing left turn heading 121° to cross RIC VORTAC 7 DME at or above 4000, then climbing left turn heading 041° to intercept RIC VORTAC R-074 to MODEL INT/RIC 33 DME, then on HCM VORTAC R-010 to COLIN INT/HCM 39 DME, thence . . .

**TAKEOFF RUNWAY 20:** Climb heading 203° to 687, then climbing left turn heading 121° to cross RIC VORTAC 7 DME at or above 4000, then climbing left turn heading 041° to intercept RIC VORTAC R-074 to MODEL INT/RIC 33 DME, then on HCM VORTAC R-010 to COLIN INT/HCM 39 DME, thence . . .

**TAKEOFF RUNWAY 34:** Climb heading 337° to 687, then climbing right turn heading 061° to intercept RIC VORTAC R-050 to COLIN INT/RIC 47 DME, thence . . .

. . . maintain 5000 or assigned altitude. Expect filed altitude within ten minutes after departure.

# COLIN EIGHT DEPARTURE