

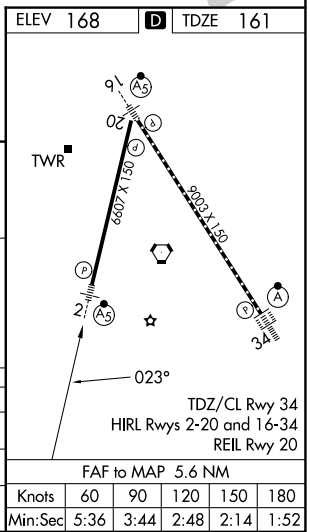
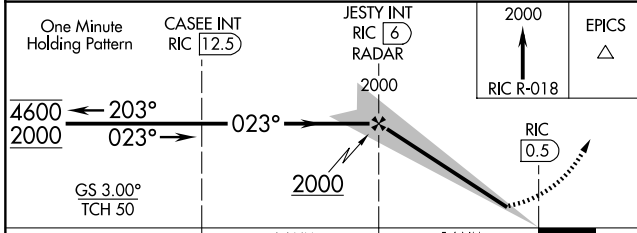
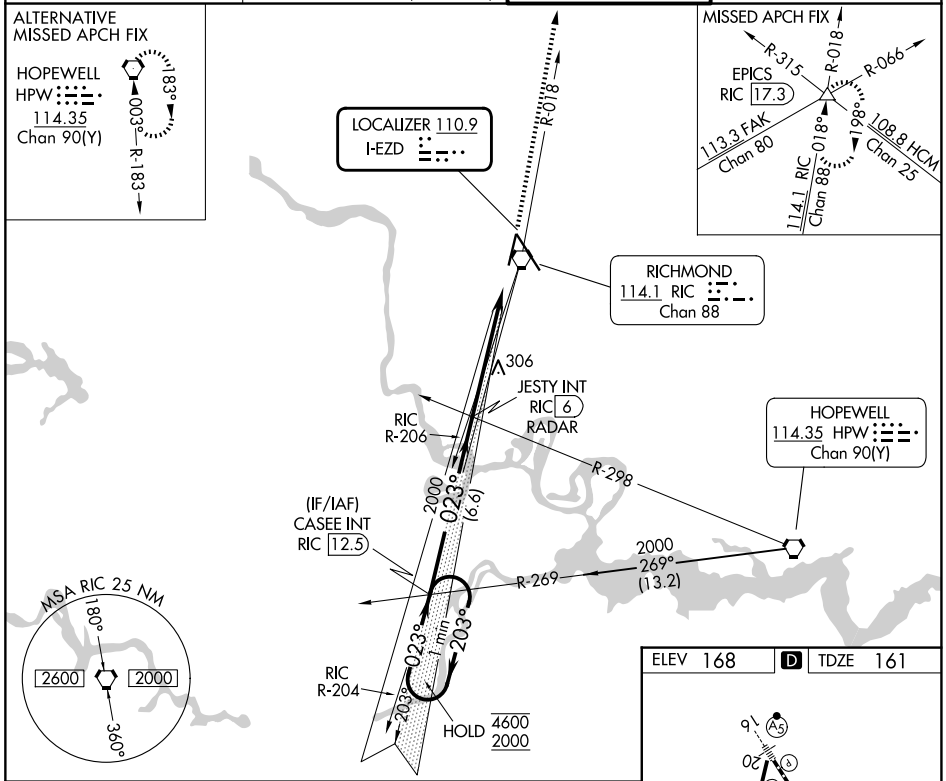
LOC I-EZD 110.9	APP CRS 023°	Rwy Ldg TDZE Apt Elev 6607 161 168
---------------------------	------------------------	--

ILS or LOC RWY 2

RICHMOND INTL (RIC)

<p>▼ Rwy 2 helicopter visibility reduction below ¼ SM NA. For inop ALS, increase S-ILS 2 all Cats visibility to ½ SM and S-LOC 2 Cats A and B visibility to 1 SM.</p>	<p>MALSRL</p>	<p>MISSED APPROACH: Climb to 2000 on RIC VORTAC R-018 to EPICS INT/ RIC 17.3 DME and hold.</p>
--	---------------	--

<p>ATIS 119.15 263.025</p>	<p>POTOMAC APP CON 126.4 282.375 (001°-185°) 126.75 307.2 (186°-360°)</p>	<p>RICHMOND TOWER 121.1 257.8</p>	<p>GND CON 121.9 348.6</p>
---------------------------------------	---	--	---------------------------------------



CATEGORY	A	B	C	D
S-ILS 2		457-¾ 296 (300-¾)		
S-LOC 2		560-¾ 399 (400-¾)		
CIRCLING	660-1 492 (500-1)		700-1½ 532 (600-1½)	720-2 552 (600-2)

NE-3, 14 MAY 2026 to 11 JUN 2026

NE-3, 14 MAY 2026 to 11 JUN 2026