

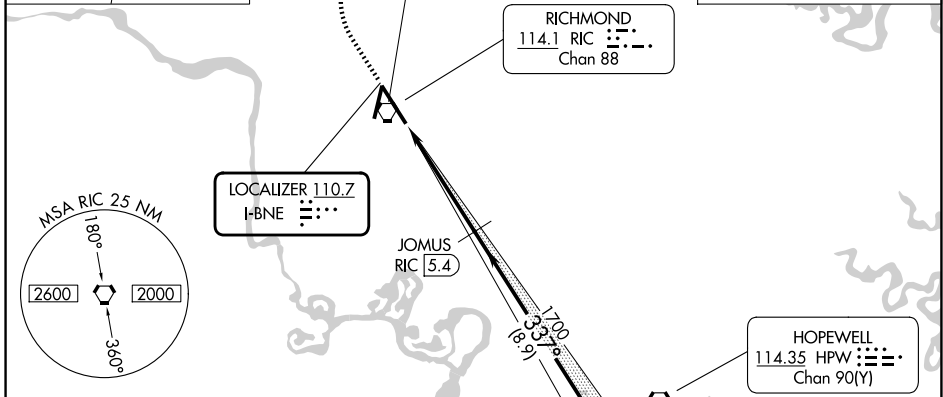
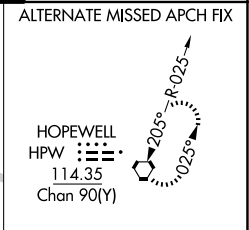
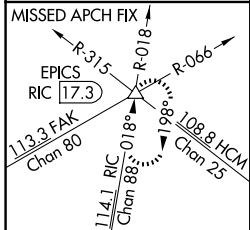
LOC I-BNE 110.7	APP CRS 337°	Rwy Ldg TDZE Apt Elev	9003 161 168
---------------------------	------------------------	-----------------------------	---

ILS or LOC RWY 34

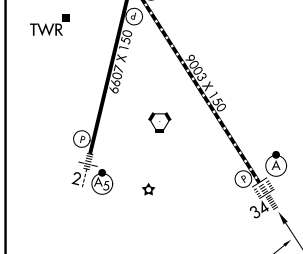
RICHMOND INTL (RIC)

DME required for LOC only.	ALSF-2 	MISSED APPROACH: Climb to 800 then climbing right turn to 2000 on RIC VORTAC R-018 to EPICS INT/RIC 17.3 DME and hold.
----------------------------	------------	--

ATIS 119.15 263.025	POTOMAC APP CON 126.4 282.375 (001°-185°) 126.75 307.2 (186°-360°)	RICHMOND TOWER 121.1 257.8	GND CON 121.9 348.6
-------------------------------	--	--------------------------------------	-------------------------------



ELEV 168	D	TDZE 161
-----------------	----------	-----------------



800	2000	EPICS	JOMUS RIC 5.4	JUVPO RIC 14.3
↑	RIC R-018	△	1700	1700
VGSI and ILS glidepath not coincident (VGSI Angle 3.00/TCH 79).			337°	1700
GS 3.00° TCH 54			1.2 NM	3.5 NM
			8.9 NM	

TDZ/CL Rwy 34 HIRL Rws 2-20 and 16-34 REIL Rwy 20 FAF to MAP 4.7 NM	CATEGORY	A	B	C	D	E
	S-ILS 34	361/18		200 (200-½)		
	S-LOC 34	620/24	459 (500-½)	620/45		459 (500-¾)
	CIRCLING	660-1	492 (500-1)	700-1½ 532 (600-1½)	720-2 552 (600-2)	740-2 572 (600-2)

NE-3, 14 MAY 2026 to 11 JUN 2026

NE-3, 14 MAY 2026 to 11 JUN 2026