

TOP ALTITUDE:  
5000

(READE7, READE) 241.09  
READE SEVEN DEPARTURE

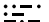
AL-347 (FAA)

RICHMOND INTL (RIC)  
RICHMOND, VIRGINIA

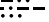
ATIS 119.15 263.025  
CLNC DEL  
127.55 348.6  
GND CON  
121.9 348.6  
RICHMOND TOWER  
121.1 257.8  
POTOMAC DEP CON  
126.75 307.2

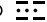
MONTEBELLO  
115.3 MOL   
Chan 100

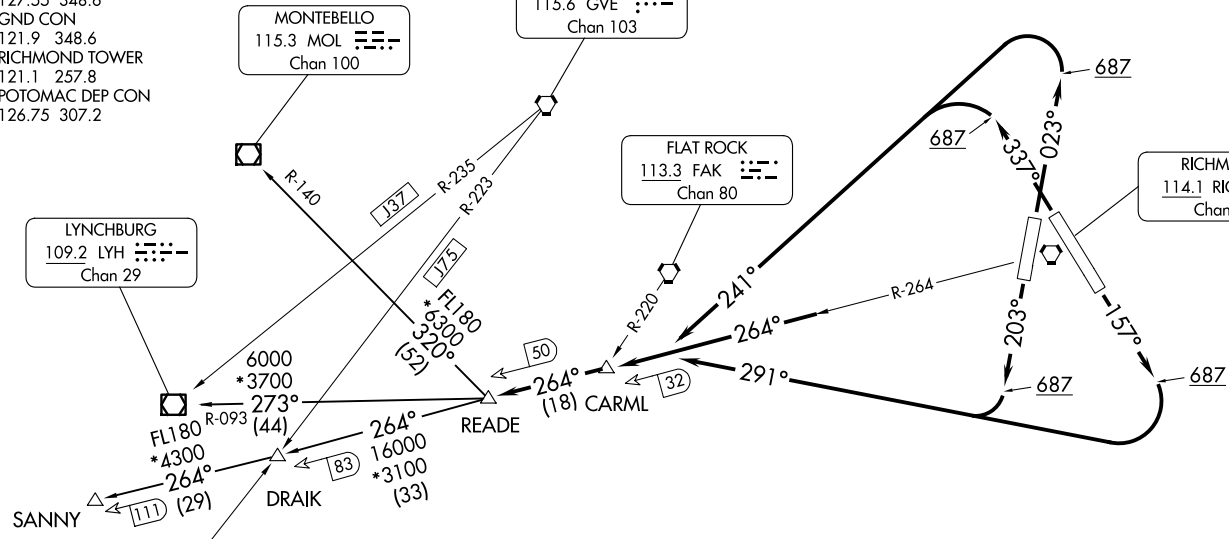
GORDONSVILLE  
115.6 GVE   
Chan 103

FLAT ROCK  
113.3 FAK   
Chan 80

RICHMOND  
114.1 RIC   
Chan 88

LYNCHBURG  
109.2 LYH   
Chan 29

GREENSBORO  
116.2 GSO   
Chan 109



NOTE: DME required.

TAKEOFF MINIMUMS

Rwys 2, 16, 20, 34: Standard with minimum climb of 500' per NM to 687.

(NARRATIVE ON FOLLOWING PAGE)

NOTE: Chart not to scale.

READE SEVEN DEPARTURE  
(READE7, READE) 05DEC19

RICHMOND VIRGINIA  
RICHMOND INTL (RIC)

# READE SEVEN DEPARTURE



## DEPARTURE ROUTE DESCRIPTION

TAKEOFF RUNWAY 2: Climb heading 023° to 687, then climbing left turn heading 241°, thence . . . .

TAKEOFF RUNWAY 16: Climb heading 157° to 687, then climbing right turn heading 291°, thence . . . .

TAKEOFF RUNWAY 20: Climb heading 203° to 687, then climbing right turn heading 291°, thence . . . .

TAKEOFF RUNWAY 34: Climb heading 337° to 687, then climbing left turn heading 241°, thence . . . .

. . . . intercept RIC VORTAC R-264 to CARML INT/RIC 32 DME, then on RIC VORTAC R-264 to READE INT/RIC 50 DME, then on assigned transition, maintain 5000. Expect filed altitude within ten minutes after departure.

DRAIK TRANSITION (READE7.DRAIK): From over READE INT/RIC 50 DME on RIC R-264 to DRAIK INT.

LYNCHBURG TRANSITION (READE7.LYH): From over READE INT/RIC 50 DME on LYH R-093 to LYH VOR/DME.

MONTEBELLO TRANSITION (READE7.MOL): From over READE INT/RIC 50 DME on MOL R-140 to MOL VOR/DME.

SANNY TRANSITION (READE7.SANNY): From over READE INT/RIC 50 DME on RIC R-264 to SANNY.

NE-3, 14 MAY 2026 to 11 JUN 2026

NE-3, 14 MAY 2026 to 11 JUN 2026