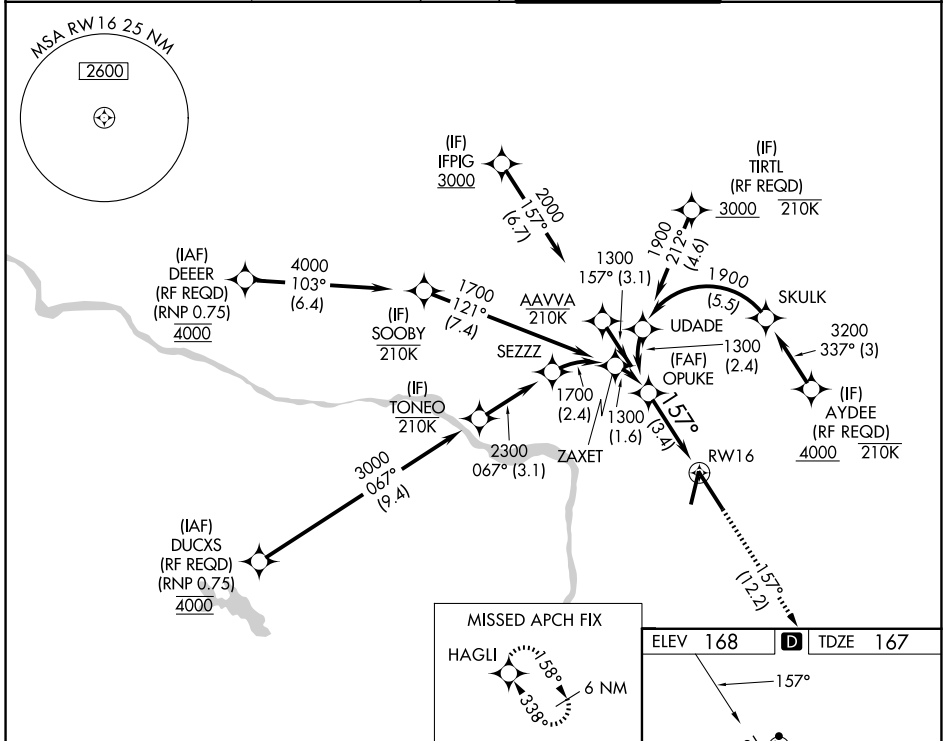


APP CRS	Rwy Ldg	<b>9003</b>
<b>157°</b>	TDZE	<b>167</b>
	Apt Elev	<b>168</b>

# RNAV (RNP) Y RWY 16

RICHMOND INTL (RIC)

RNP AR APCH.		MALSR	MISSED APPROACH: Climb to 2500 on track 157° to HAGLI and hold.
<p>▼ For uncompensated Baro-VNAV systems, procedure NA below -11°C (13°F) or above 54°C (130°F). For inop ALS, increase RNP 0.11 all Cats visibility to RVR 5500 and RNP 0.30 all Cats visibility to 1½ SM.</p>			
ATIS	POTOMAC APP CON	RICHMOND TOWER	GND CON
<b>119.15 263.025</b>	<b>126.4 282.375</b> (001°-185°) <b>126.75 307.2</b> (186°-360°)	<b>121.1 257.8</b>	<b>121.9 348.6</b>



NE-3, 14 MAY 2026 to 11 JUN 2026

NE-3, 14 MAY 2026 to 11 JUN 2026

<p>OPUKE</p> <p>VGSI and RNAV glidepath not coincident (VGSI Angle 3.00/TCH 71).</p> <p>2500 HAGLI</p> <p>↑ tr 157°</p> <p>1300</p> <p>157°</p> <p>GP 3.00° TCH 54</p> <p>See planview for multiple IF locations.</p> <p>3.4 NM</p>		<p>ELEV 168</p> <p>TDZE 167</p>		
CATEGORY	A	B	C	D
RNP 0.11 DA	506/40 339 (400-¾)			
RNP 0.30 DA	606/50 439 (500-1)			
<b>AUTHORIZATION REQUIRED</b>				
<p>TDZ/CL Rwy 34</p> <p>HIRL Rwy 2-20 and 16-34</p> <p>REIL Rwy 20</p>				