

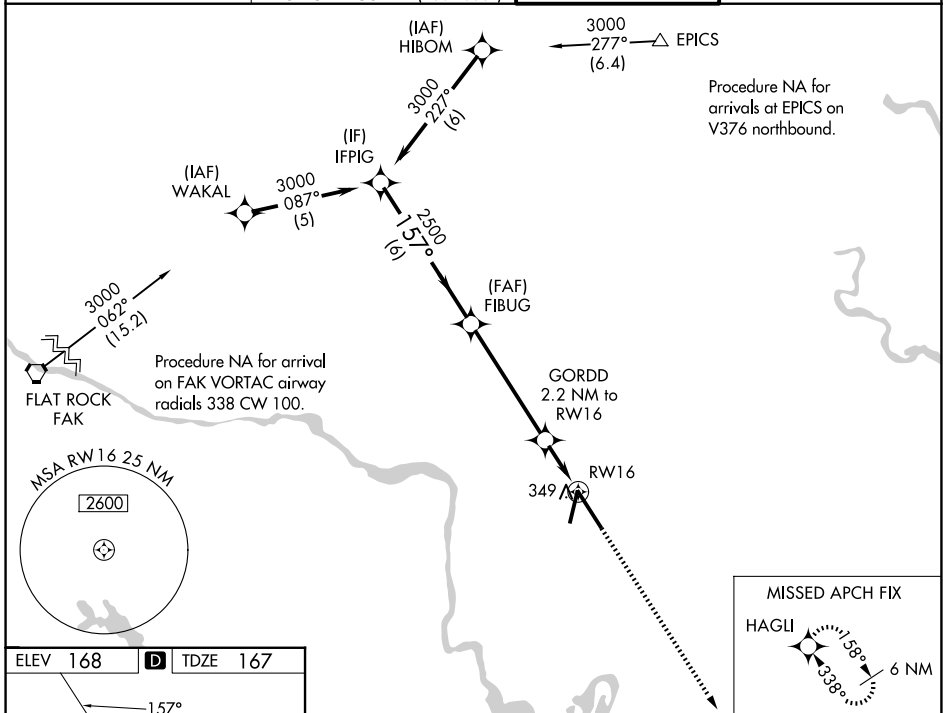
WAAS CH <b>72720</b> <b>W16A</b>	APP CRS <b>157°</b>	Rwy Ldg TDZE Apt Elev	<b>9003</b> <b>167</b> <b>168</b>
--	------------------------	-----------------------------	---

# RNAV (GPS) Z RWY 16

RICHMOND INTL (RIC)

RNP APCH	MALSR	MISSED APPROACH: Climb to 2500 direct HAGLI and hold.
For uncompensated Baro-VNAV systems, LNAV/VNAV NA below -11°C (13°F) or above 54°C (130°F). For inop ALS increase LNAV/VNAV all Cats visibility to RVR 5400. ** RVR 1800 authorized with use of FD or AP or HUD to DA.		

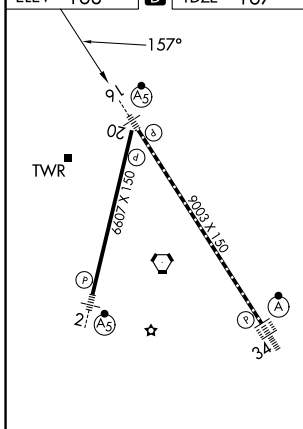
ATIS <b>119.15 263.025</b>	POTOMAC APP CON <b>126.4 282.375</b> (001°-185°) <b>126.75 307.2</b> (186°-360°)	RICHMOND TOWER <b>121.1 257.8</b>	GND CON <b>121.9 348.6</b>
-------------------------------	--	--------------------------------------	-------------------------------



NE-3, 14 MAY 2026 to 11 JUN 2026

NE-3, 14 MAY 2026 to 11 JUN 2026

ELEV 168	<b>D</b>	TDZE 167
----------	----------	----------



TDZ/CL Rwy 34  
HIRL Rws 2-20 and 16-34  
REIL Rwy 20

	VGSIs and RNAV glidepath not coincident (VGSi Angle 3.00/TCH 71).			2500	HAGLI
	IFPIG	FIBUG	GORDD		
	3000	2500	2.2 NM to RW16		
	GP 3.00° TCH 54	157°	920*	*1.2 NM to RW16	
		2500			
	6 NM	5 NM	1 NM	1.2 NM	
CATEGORY	A	B	C	D	
LPV DA **	367/24 200 (200-½)				
LNAV/VNAV DA	504/31 337 (400-¾)				
LNAV MDA	600/24	433 (500-½)	600/40	433 (500-¾)	
CIRCLING	660-1	492 (500-1)	700-1½ 532 (600-1½)	720-2 552 (600-2)	

\*LNAV only.