

VORTAC RIC 114.1 Chan 88	APP CRS 188°	Rwy Ldg 6607 TDZE 168 Apt Elev 168
--	------------------------	---

VOR RWY 20

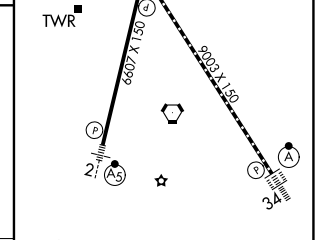
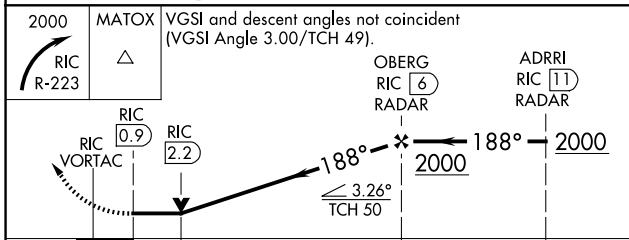
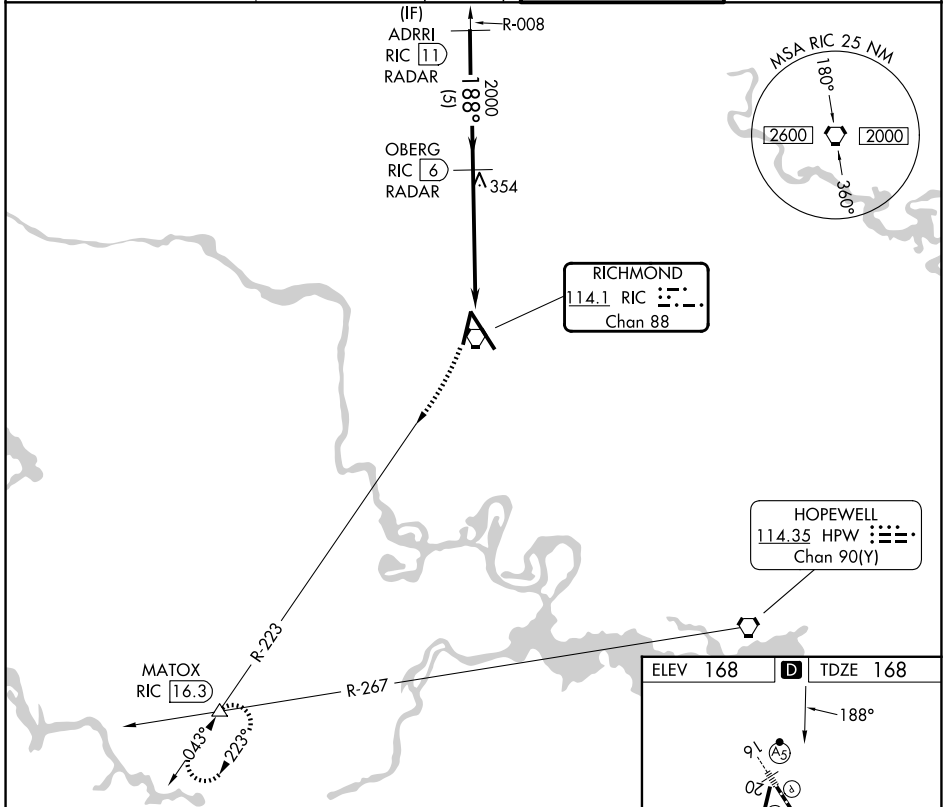
RICHMOND INTL (RIC)

RADAR required for procedure entry. DME or RADAR required.

MISSED APPROACH: Climbing right turn to 2000 on RIC R-223 to MATOX INT/RIC 16.3 DME and hold.

▼ Rwy 20 helicopter visibility reduction below 3/4 SM NA.

ATIS 119.15 263.025	POTOMAC APP CON 126.4 282.375 (001°-185°) 126.75 307.2 (186°-360°)	RICHMOND TOWER 121.1 257.8	GND CON 121.9 348.6
-------------------------------	--	--------------------------------------	-------------------------------



ELEV 168	D	TDZE 168		
TDZ/CL Rwy 34 HIRL Rwys 2-20 and 16-34 REIL Rwy 20 FAF to MAP 5.2 NM				
CATEGORY	A	B	C	D
S-20	660-1	492 (500-1)	660-1 3/8	492 (500-1 3/8)
CIRCLING	660-1	492 (500-1)	700-1 1/2	720-2
			532 (600-1 1/2)	552 (600-2)
	Knots			
	60	90	120	150
	180			
	Min:Sec			
	5:12	3:28	2:36	2:05
				1:44

NE-3, 14 MAY 2026 to 11 JUN 2026

NE-3, 14 MAY 2026 to 11 JUN 2026