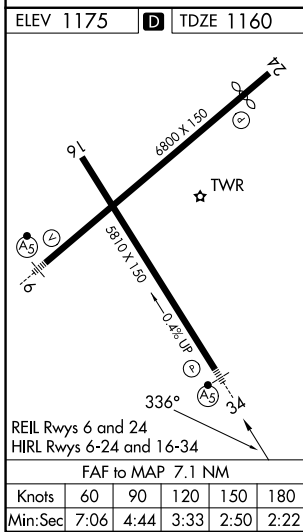
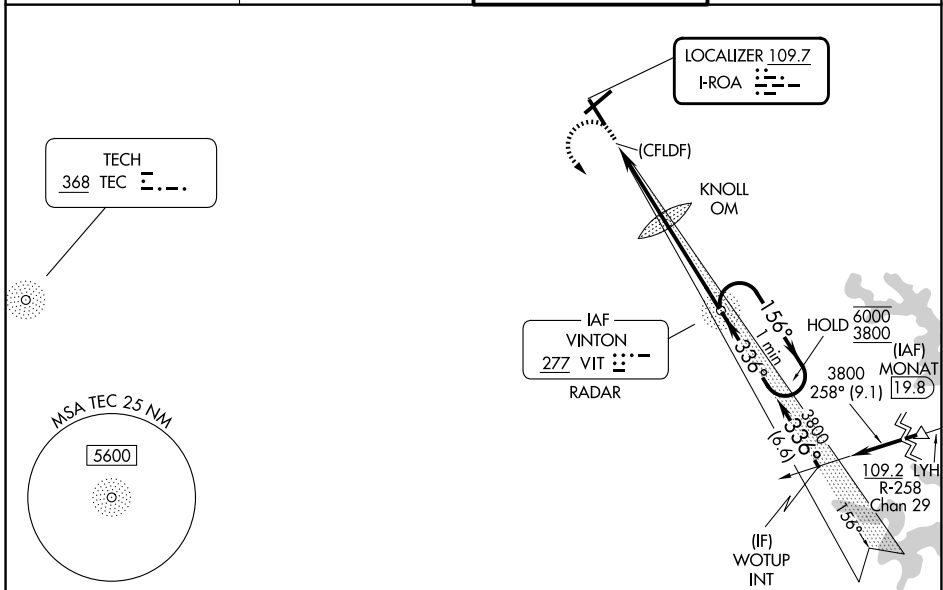


LOC I-ROA 109.7	APP CRS 336°	Rwy Ldg 5810
		TDZE 1160
		Apt Elev 1175

ILS or LOC RWY 34

ROANOKE/BLACKSBURG RGNL (WOODRUM FLD) (R.O.A)

DME required for procedure entry. ADF or RADAR required.		MALSR 	MISSED APPROACH: Climb to 2300 then climbing left turn to 4500 direct VIT NDB and hold. Continue climb-in-hold to 4500. # Missed approach requires minimum climb of 425 feet perNM to 3700.
For inop ALS, increase S-ILS 34 # all Cats to within 1 3/8 SM. Circling NA northwest of Rwy 6-24. Inop table does not apply to S-ILS 34 all Cats.			
ATIS 132.375	ROANOKE APP CON 133.225 339.8	ROANOKE TOWER 118.3 257.8	GND CON 121.9 257.8



Procedure NA for arrivals at MONAT on V470 northeast bound.	
2300 4500 VIT	One Minute Holding Pattern VIT NDB RADAR 3780 3800 6000 3800 156° → ← 336° 3800 GS 3.00° TCH 56
0.9 3.3 NM 3.8 NM	
CATEGORY	A B C D
S-ILS 34 #	1603-7/8 443 (500-7%)
S-ILS 34	2040-4 880 (900-4)
S-LOC 34	2140-3/4 980 (1000-3/4) 2140-1 980 (1000-1) 2140-2 1/2 980 (1000-2 1/2)
CIRCLING	2140-1 1/4 965 (1000-1 1/4) 2140-1 1/2 965 (1000-1 1/2) 2460-3 1285 (1300-3) 2800-3 1625 (1700-3)

NE-3, 14 MAY 2026 to 11 JUN 2026

NE-3, 14 MAY 2026 to 11 JUN 2026