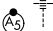


LOC/DME I-SZK 111.1 Chan 48	APP CRS 072°	Rwy Idg 6800 TDZE 1175 Apt Elev 1175
---	------------------------	---

LDA Y RWY 6


ROANOKE/BLACKSBURG RGNL (WOODRUM FLD) (R.O.A)

RADAR required for procedure entry. ADF required. DME or RADAR required for LOC only.

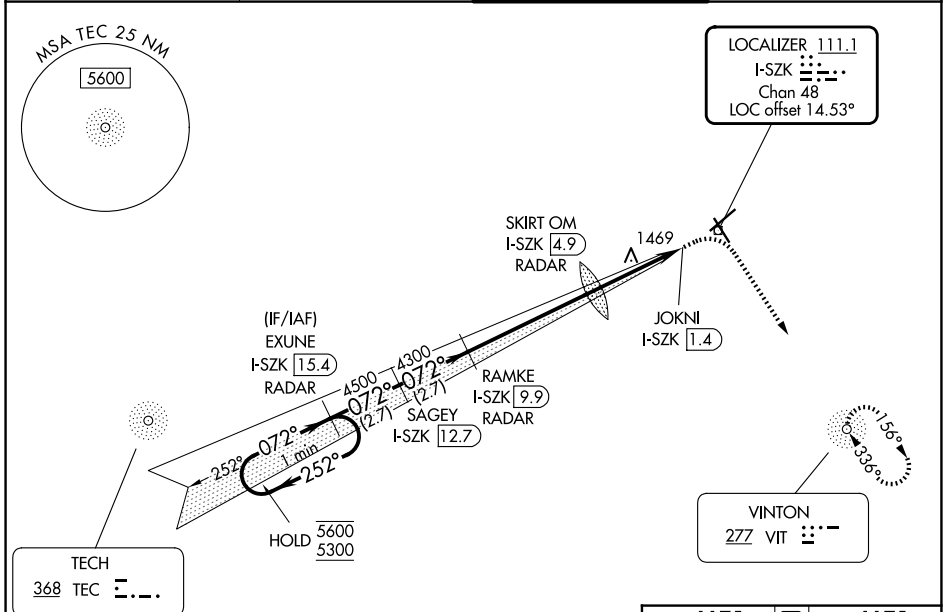
MALS


MISSED APPROACH: Climb to 2200 then climbing right turn to 5000 direct VIT NDB and hold, continue climb-in-hold to 5000.

For inop ALS, increase S-LDA 6 visibility Cats A/B to 1 3/8 SM. Circling NA northwest of Rwy 6-24. Inop table does not apply to S-LDA 6 Cats C and D. Inop table does not apply to S-LDA/GS 6 all Cats.

 -12° C

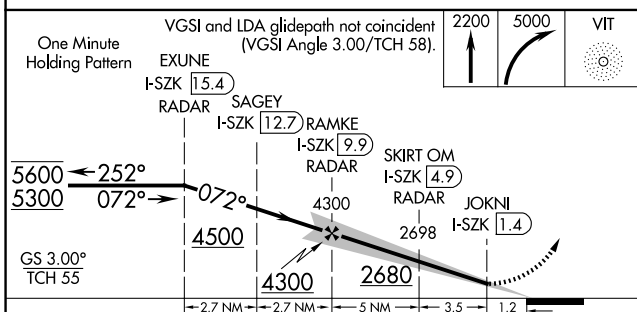
ATIS 132.375	ROANOKE APP CON 133.225 339.8	ROANOKE TOWER 118.3 257.8	GND CON 121.9 257.8
------------------------	---	-------------------------------------	-------------------------------



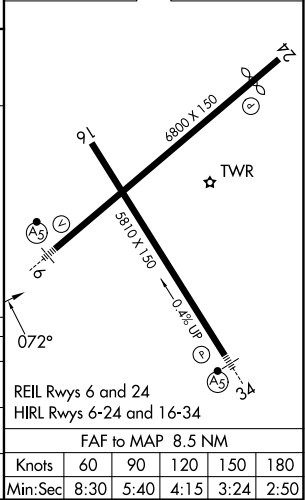
NE-3, 14 MAY 2026 to 11 JUN 2026

NE-3, 14 MAY 2026 to 11 JUN 2026

LDA/GLIDE SLOPE



ELEV 1175	D TDZE 1175
-----------	--------------------



CATEGORY	A	B	C	D
S-LDA/GS 6	1857-2		682 (700-2)	
S-LDA 6	1880-1	705 (800-1)	1880-2	705 (800-2)
CIRCLING	1880-1 1/2	705 (800-1 1/2)	2460-3 1285 (1300-3)	2800-3 1625 (1700-3)

REIL Rwys 6 and 24 HIRL Rwys 6-24 and 16-34					
FAF to MAP 8.5 NM					
Knots	60	90	120	150	180
Min:Sec	8:30	5:40	4:15	3:24	2:50