

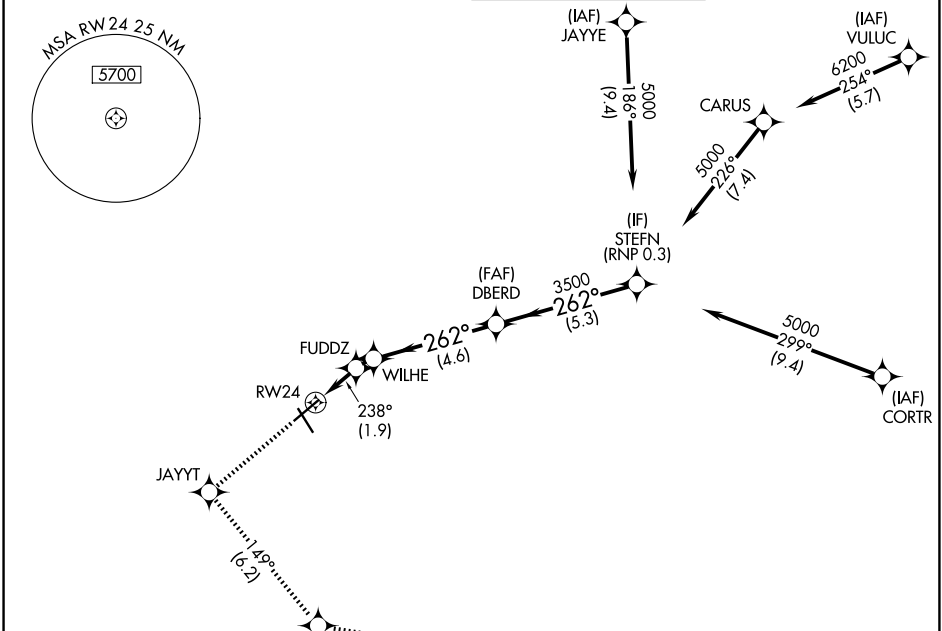
APP CRS	Rwy Ldg	<b>6010</b>
<b>238°</b>	TDZE	<b>1170</b>
	Apt Elev	<b>1175</b>

# RNAV (RNP) Z RWY 24

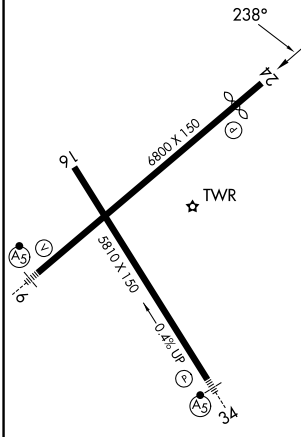
ROANOKE/BLACKSBURG RGNL (WOODRUM FLD) (R.O.A)

RNP AR APCH - GPS.	MISSED APPROACH: Climb to 4000 direct JAYYT and on track 149° to TPUCK and on track 107° to MONAT and hold. # Missed approach requires minimum climb of 230 feet per NM to 3200.
▼ For uncompensated Baro-VNAV systems, procedure NA below -14°C or above 54°C.	
⚠ -12°C	

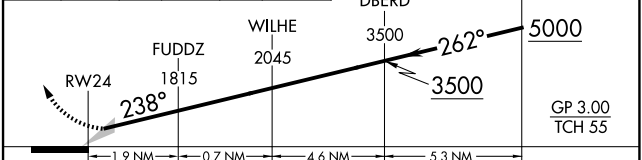
ATIS <b>132.375</b>	ROANOKE APP CON <b>133.225 339.8</b>	ROANOKE TOWER <b>118.3 257.8</b>	GND CON <b>121.9 257.8</b>
------------------------	---	-------------------------------------	-------------------------------



ELEV 1175	<b>D</b>	TDZE 1170
-----------	----------	-----------



4000	JAYYT	tr 149°	TPUCK	tr 107°	MONAT
------	-------	---------	-------	---------	-------



CATEGORY	A	B	C	D
# RNP 0.15 DA		1491-1	321 (400-1)	
RNP 0.30 DA		1633-1 1/8	463 (500-1 1/8)	

**AUTHORIZATION REQUIRED**

NE-3, 14 MAY 2026 to 11 JUN 2026

NE-3, 14 MAY 2026 to 11 JUN 2026