


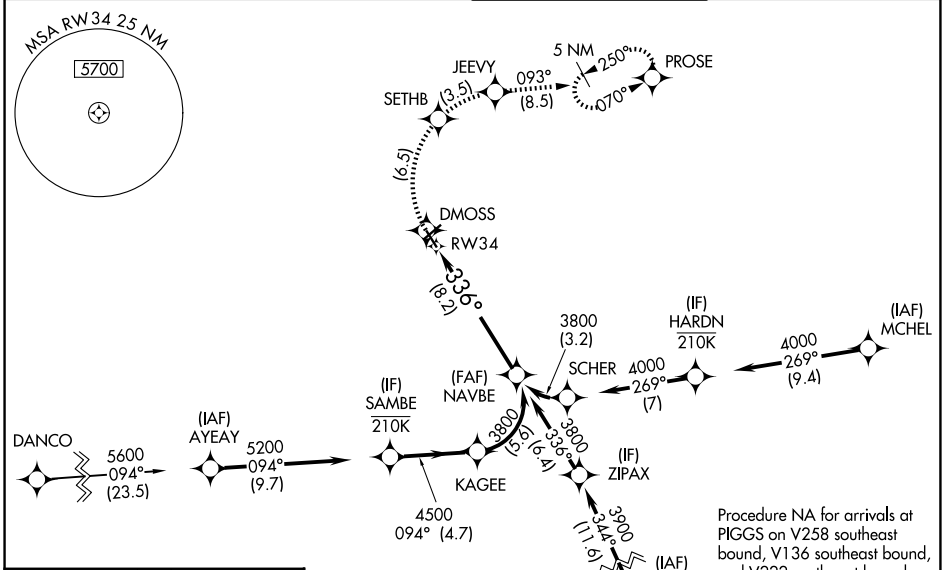
APP CRS	Rwy Ldg	5810
336°	TDZE	1160
	Apt Elev	1175

RNAV (RNP) Z RWY 34

ROANOKE/BLACKSBURG RGNL (WOODRUM FLD) (R.O.A)

<p>RNP AR APCH. RF required.</p> <p>⚠ Missed approach requires RNP less than 1.0. For inop ALS, increase RNP 0.30* all Cats visibility to 1 1/2 SM. Inop table does not apply to RNP 0.30.</p> <p>❄-12°C For uncompensated Baro-VNAV systems, procedure NA below -14°C or above 54°C.</p>	<p>MALSR</p>  <p>MISSED APPROACH: Climb to 6000 on track 336° to DMOSS, right turn to SETHB, right turn to JEEVY and on track 093° to PROSE and hold. * Missed approach requires minimum climb of 350 feet per NM to 4100. # Missed approach requires minimum climb of 415 feet per NM to 4100.</p>
---	---

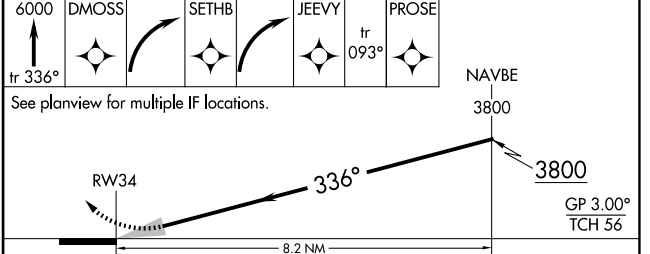
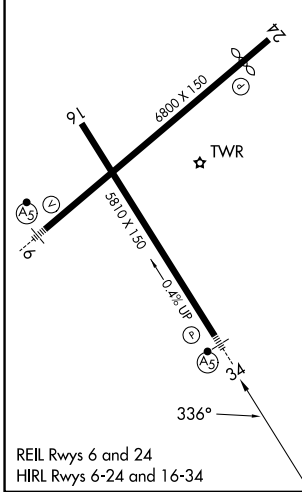
<p>ATIS</p> <p>132.375</p>	<p>ROANOKE APP CON</p> <p>133.225 339.8</p>	<p>ROANOKE TOWER</p> <p>118.3 257.8</p>	<p>GND CON</p> <p>121.9 257.8</p>
-----------------------------------	--	--	--



NE-3, 14 MAY 2026 to 11 JUN 2026

NE-3, 14 MAY 2026 to 11 JUN 2026

ELEV 1175	D	TDZE 1160
-----------	----------	-----------



CATEGORY	A	B	C	D
RNP 0.15 DA #		1495-1/2	335 (400-1/2)	
RNP 0.30 DA*		1646-1	486 (500-1)	
RNP 0.30 DA		2115-4	955 (1000-4)	

AUTHORIZATION REQUIRED