

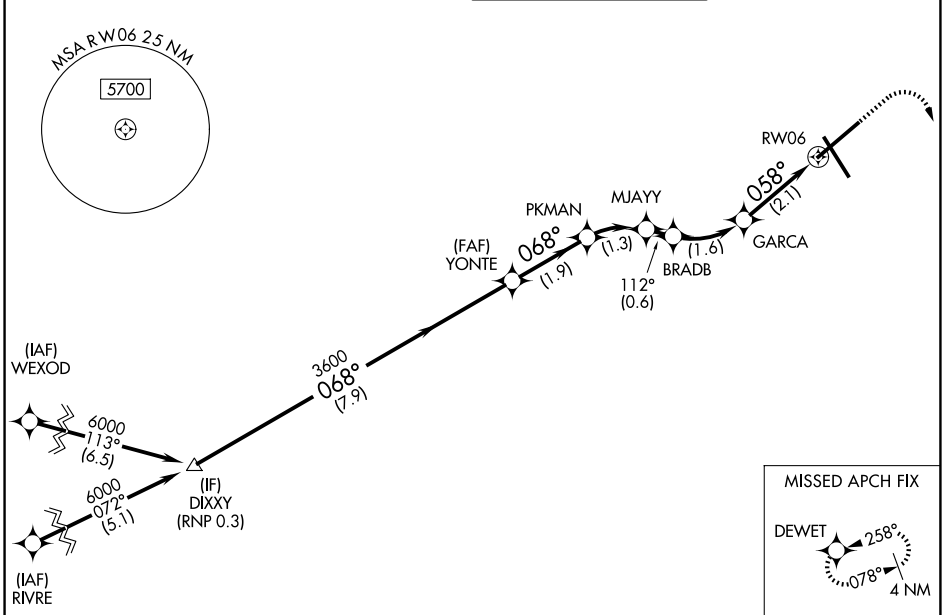
APP CRS	Rwy Ldg	<b>6800</b>
<b>058°</b>	TDZE	<b>1175</b>
	Apt Elev	<b>1175</b>

# RNAV (RNP) Z RWY 6

ROANOKE/BLACKSBURG RGNL (WOODRUM FLD) (R.O.A)

RNP AR APCH - GPS.	MALSR	MISSED APPROACH: (Do not exceed 240K until DEWET) Climb to 1600 then climbing right turn to 5000 direct DEWET and hold, continue climb-in-hold to 5000. *Missed approach requires minimum climb of 370 feet per NM to 2900.
-12°C For uncompensated Baro-VNAV systems, procedure NA below -14°C or above 54°C. For inop ALS, increase RNP 0.20 all Cats visibility to 3/8 SM.		

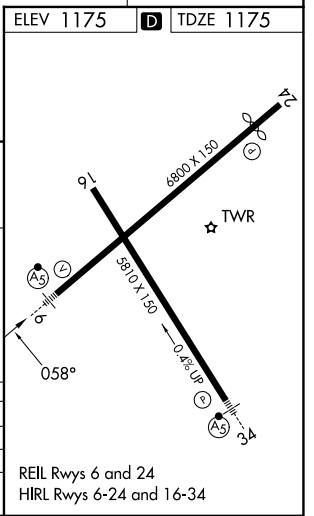
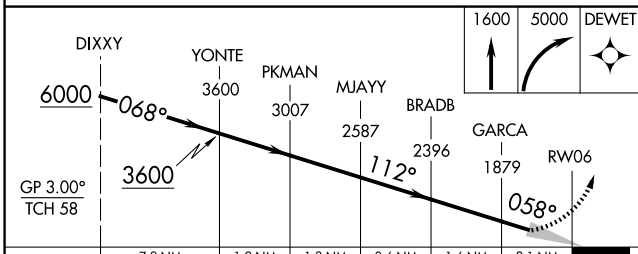
ATIS <b>132.375</b>	ROANOKE APP CON <b>133.225 339.8</b>	ROANOKE TOWER <b>118.3 257.8</b>	GND CON <b>121.9 257.8</b>
------------------------	---	-------------------------------------	-------------------------------



NE-3, 14 MAY 2026 to 11 JUN 2026

NE-3, 14 MAY 2026 to 11 JUN 2026

ELEV 1175	<b>D</b>	TDZE 1175
-----------	----------	-----------



CATEGORY	A	B	C	D
RNP 0.20 DA*		1444-1/2	269 (300-1/2)	
RNP 0.30 DA		1605-3/4	430 (500-3/4)	

## AUTHORIZATION REQUIRED

REIL Rwy 6 and 24  
HIRL Rwy 6-24 and 16-34