

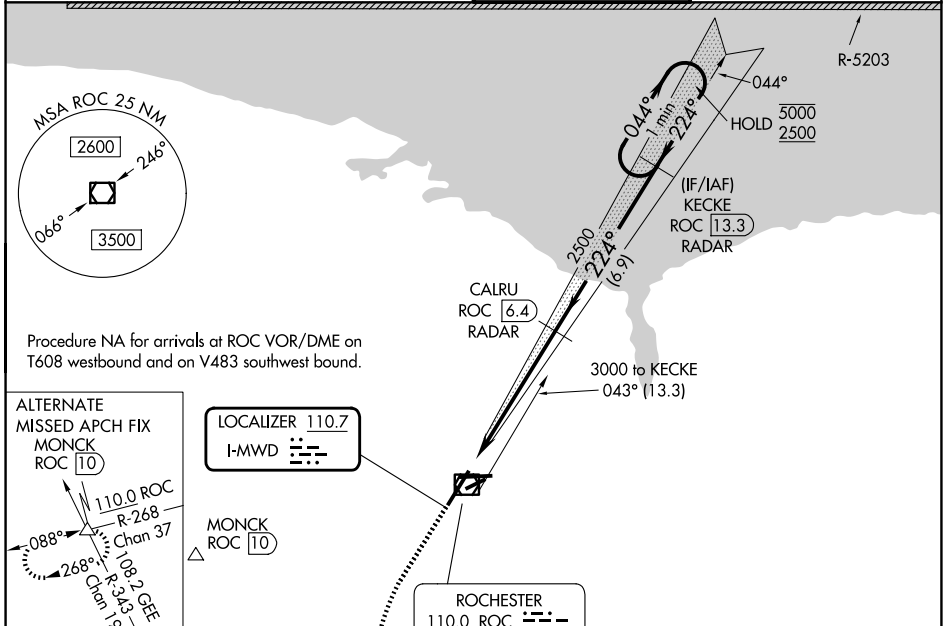
LOC I-MWD <b>110.7</b>	APP CRS <b>224°</b>	Rwy Ldg TDZE Apt Elev	<b>8001</b> <b>559</b> <b>559</b>
---------------------------	------------------------	-----------------------------	---

# ILS or LOC RWY 22

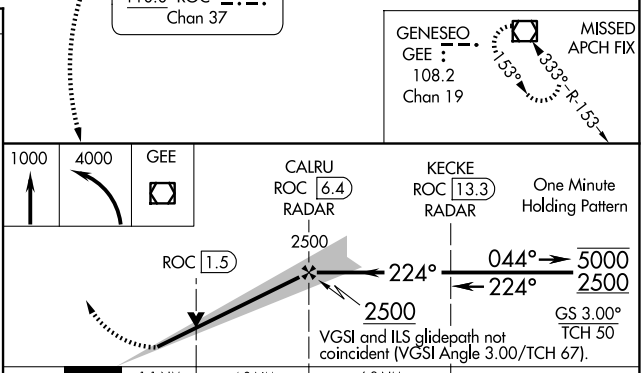
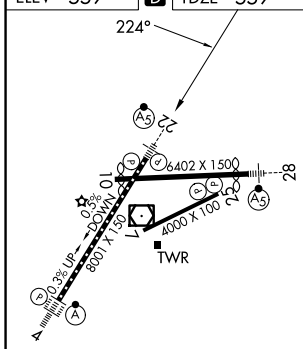
FREDERICK DOUGLASS/GREATER ROCHESTER INTL (ROC)

DME or RADAR required.		MALSR 	MISSED APPROACH: Climb to 1000 then climbing left turn to 4000 direct GEE VOR/DME and hold.
<p>▼ When R-5203 active hold in lieu NA. DME from ROC VOR/DME.                  ▲ DME use requires simultaneous reception of I-MWD and ROC DME.                  * RVR 1800 authorized with use of FD or AP or HUD to DA.</p>			

ATIS <b>124.825</b>	ROCHESTER APP CON <b>119.55 269.6</b>	ROCHESTER TOWER <b>118.3 254.3</b>	GND CON <b>121.7</b>
------------------------	--	---------------------------------------	-------------------------



ELEV 559	<b>D</b>	TDZE 559
----------	----------	----------



TDZ/CL Rwy 4 REIL Rwys 7, 10 and 25 MRL Rwy 7-25 HIRL Rwys 4-22 and 10-28	FAF to MAP 5.9 NM	<table border="1"> <tr> <td>Knots</td> <td>60</td> <td>90</td> <td>120</td> <td>150</td> <td>180</td> </tr> <tr> <td>Min:Sec</td> <td>5:54</td> <td>3:56</td> <td>2:57</td> <td>2:22</td> <td>1:58</td> </tr> </table>	Knots	60	90	120	150	180	Min:Sec	5:54	3:56	2:57	2:22	1:58
Knots	60	90	120	150	180									
Min:Sec	5:54	3:56	2:57	2:22	1:58									
CATEGORY	A	B	C	D										
S-ILS 22 *	759/24 200 (200-½)													
S-LOC 22	980/24	421 (500-½)	980/40	421 (500-¾)										
CIRCLING	1060-1	501 (600-1)	1460-2¾ 901 (1000-2¾)	1460-3 901 (1000-3)										

NE-2, 14 MAY 2026 to 11 JUN 2026

NE-2, 14 MAY 2026 to 11 JUN 2026