

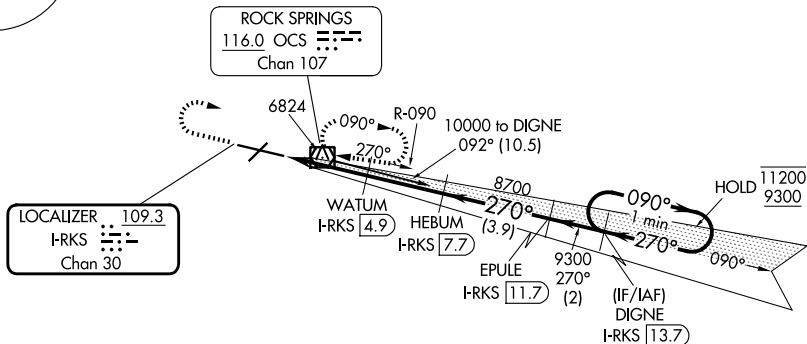
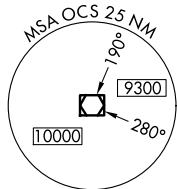
LOC/DME I-RKS 109.3 Chan 30	APP CRS 270°	Rwy Ldg TDZE Apt Elev	10002 6765 6765
--	------------------------	-----------------------------	--

ILS or LOC RWY 27

SOUTHWEST WYOMING RGNL (R.KS)

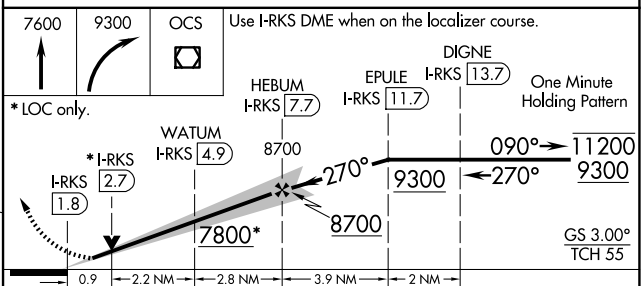
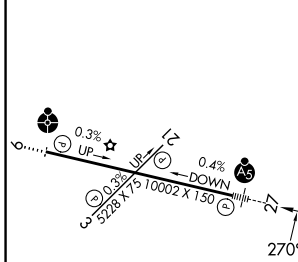
DME required.	MALSR	MISSED APPROACH: Climb to 7600 then climbing right turn to 9300 direct OCS VOR/DME and hold, continue climb-in-hold to 9300.
---------------	-------	--

AWOS-3 118.375	SALT LAKE CENTER 124.35 353.5	UNICOM 122.8 (CTAF) 0
--------------------------	---	---------------------------------



LOCALIZER 109.3
I-RKS [Chan 30]

ELEV 6765	D	TDZE 6765
-----------	----------	-----------



CATEGORY	A	B	C	D
S-ILS-27		6965-1/2	200 (200-1/2)	
S-LOC 27		7100-1/2	335 (400-1/2)	
CIRCLING	7140-1 375 (400-1)	7220-1 455 (500-1)	7220-1 1/2 455 (500-1 1/2)	7540-2 1/2 775 (800-2 1/2)

MIRL Rwy 3-21
HIRL Rwy 9-27
REIL Rws 3 and 21

NW-1, 14 MAY 2026 to 11 JUN 2026

NW-1, 14 MAY 2026 to 11 JUN 2026