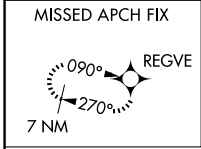


WAAS CH <b>49216</b> <b>W27A</b>	APP CRS <b>270°</b>	Rwy Ldg <b>10020</b> TDZE <b>6765</b> Apt Elev <b>6765</b>
--	------------------------	--

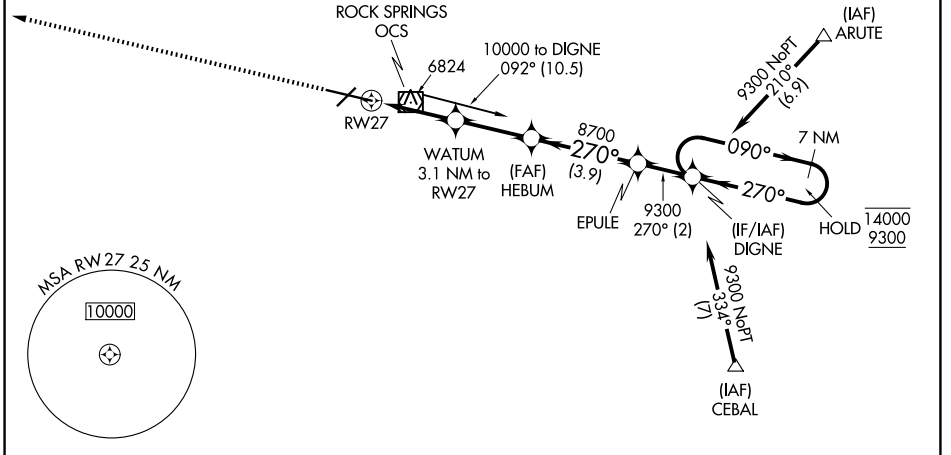
# RNAV (GPS) RWY 27

SOUTHWEST WYOMING RGNL (R.K.S)

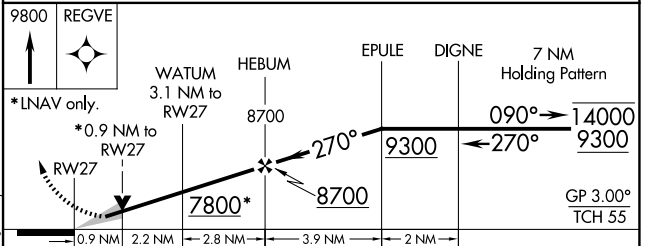
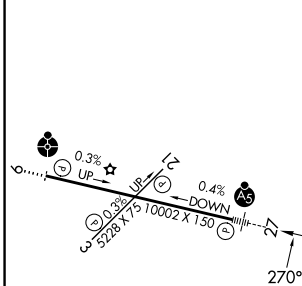
RNP APCH.	MALSR	MISSED APPROACH: Climb to 9800 direct REGVE and hold.
AWOS-3 <b>118.375</b>	SALT LAKE CENTER <b>124.35 353.5</b>	UNICOM <b>122.8 (CTAF) 0</b>



Procedure NA for arrivals at OCS VOR/DME on V235 southwest bound, V187 north and southbound and T298 southwest bound.



ELEV 6765	<b>D</b>	TDZE 6765
-----------	----------	-----------



CATEGORY	A	B	C	D
LPV DA		6965-1/2	200 (200-1/2)	
RNAV/VNAV DA		7036-1/2	271 (300-1/2)	
RNAV MDA		7100-1/2	335 (400-1/2)	
CIRCLING	7140-1 375 (400-1)	7220-1 455 (500-1)	7220-1 1/2 455 (500-1 1/2)	7540-2 1/2 775 (800-2 1/2)

MIRL Rwy 3-21  
HIRL Rwy 9-27 0  
REIL Rwy 3 and 21 0

NW-1, 14 MAY 2026 to 11 JUN 2026

NW-1, 14 MAY 2026 to 11 JUN 2026