

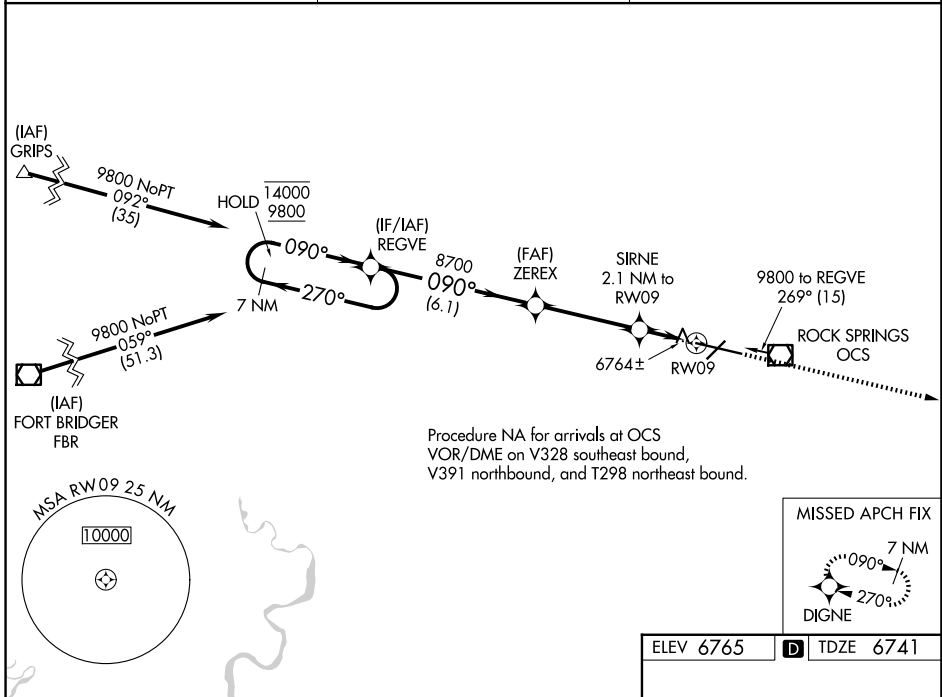
WAAS CH 66016 W09A	APP CRS 090°	Rwy Ldg 10002 TDZE 6741 Apt Elev 6765
--	------------------------	--

RNAV (GPS) RWY 9

SOUTHWEST WYOMING RGNL (R.K.S)

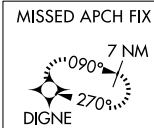
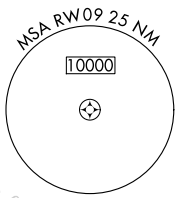
RNP APCH.	ODALS	MISSED APPROACH: Climb to 9600 direct DIGNE and hold.
<p>▼ For uncompensated Baro-VNAV systems, LNAV/VNAV NA below -28°C or above 45°C.</p> <p>▲</p>		

AWOS-3 118.375	SALT LAKE CENTER 124.35 353.5	UNICOM 122.8 (CTAF) 0
--------------------------	---	---------------------------------

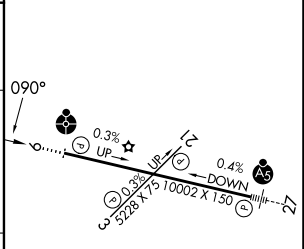
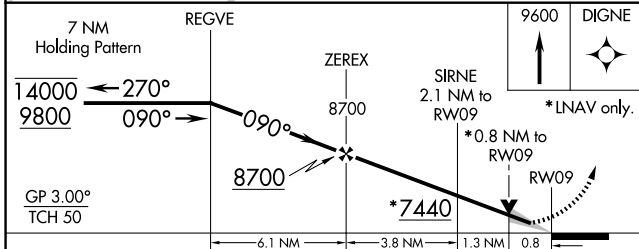


NW-1, 14 MAY 2026 to 11 JUN 2026

NW-1, 14 MAY 2026 to 11 JUN 2026



ELEV 6765	D TDZE 6741
-----------	--------------------



CATEGORY	A	B	C	D
LPV DA	6941-3/4		200 (200-3/4)	
LNAV/VNAV DA	7034-3/4		293 (300-3/4)	
LNAV MDA	7040-3/4		299 (300-3/4)	
CIRCLING	7140-1 375 (400-1)	7220-1 455 (500-1)	7220-1 1/2 455 (500-1 1/2)	7040-1 299 (300-1) 7540-2 1/2 775 (800-2 1/2)

MIRL Rwy 3-21
HIRL Rwy 9-27 **0**
REIL Rws 3 and 21 **0**