

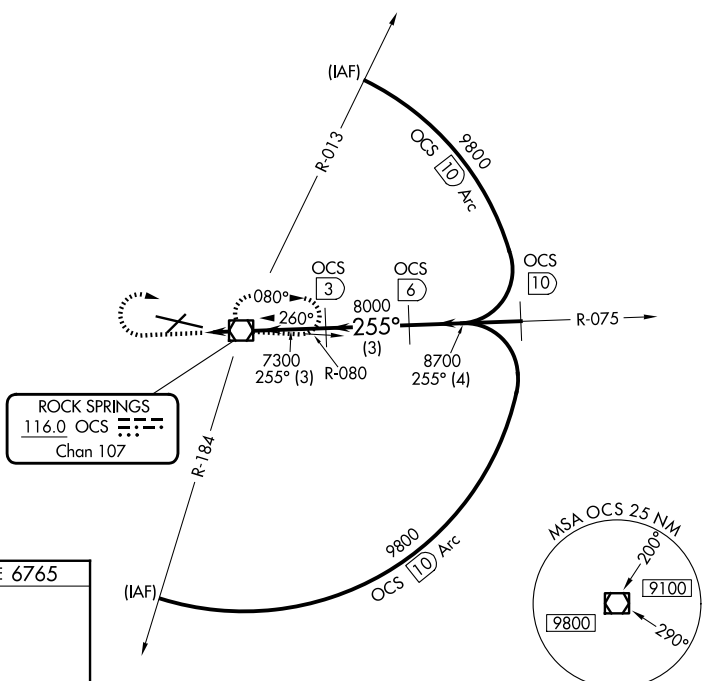
VOR/DME OCS 116.0 Chan 107	APP CRS 255°	Rwy Ldg TDZE Apt Elev	10002 6765 6765
--	------------------------	-----------------------------	--

VOR/DME RWY 27

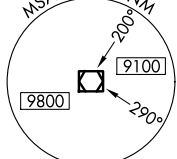
SOUTHWEST WYOMING RGNL (R.K.S)

▼ Inoperative table does not apply to Cat D.	MALSR 	MISSED APPROACH: Climb to 7700, then climbing right turn to 9100 direct OCS VOR/DME and hold.
--	-----------	---

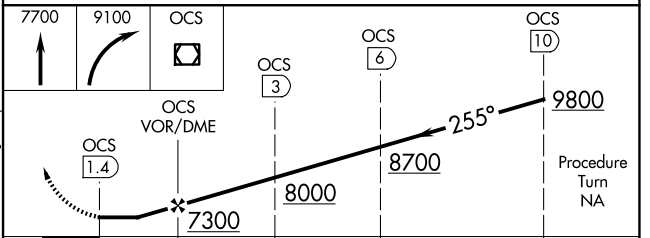
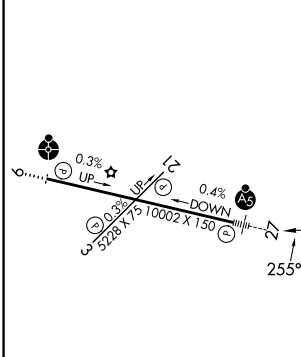
AWOS-3 118.375	SALT LAKE CENTER 124.35 353.5	UNICOM 122.8 (CTAF) ①
--------------------------	---	--



ROCK SPRINGS
116.0 OCS
Chan 107



ELEV 6765	D	TDZE 6765
-----------	----------	-----------



CATEGORY	A	B	C	D
S-27	7040-½ 275 (300-½)			7040-1 275 (300-1)
CIRCLING	7140-1 375 (400-1)	7220-1 455 (500-1)	7220-1½ 455 (500-1½)	NA

MIRL Rwy 3-21
HIRL Rwy 9-27 **①**
REIL Rwy 3 and 21 **①**

NW-1, 14 MAY 2026 to 11 JUN 2026

NW-1, 14 MAY 2026 to 11 JUN 2026