

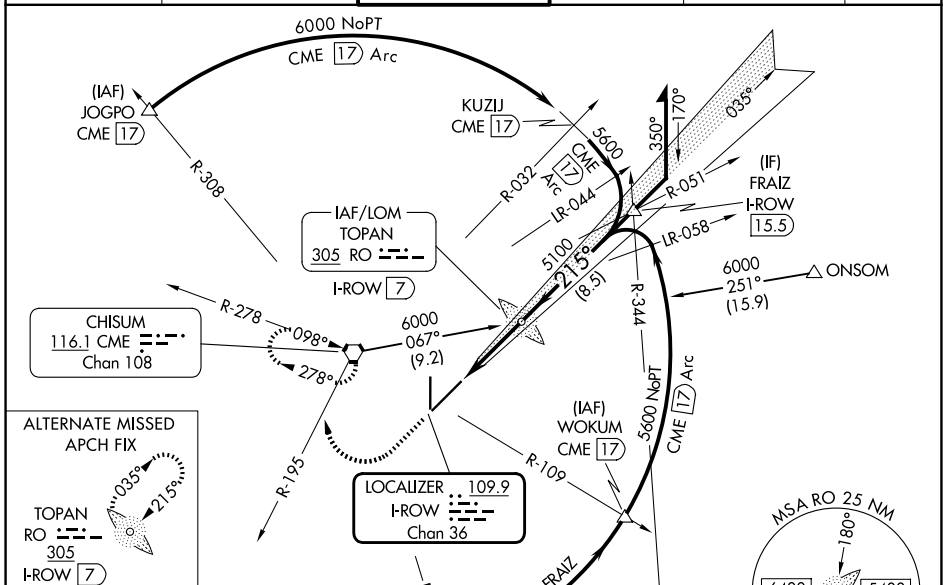
LOC/DME I-ROW 109.9 Chan 36	APP CRS 215°	Rwy Ldg 13000 TDZE 3633 Apt Elev 3671
--	------------------------	--

ILS Z or LOC Z RWY 21

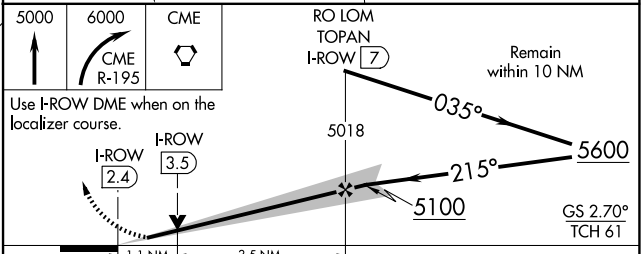
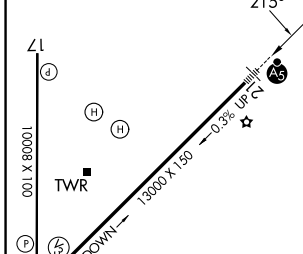
ROSWELL AIR CENTER (ROW)

ADF or DME required.	MALSR	MISSED APPROACH: Climb to 5000 then climbing right turn to 6000 on CME VORTAC R-195 to CME VORTAC and hold, continue climb-in-hold to 6000.
<p>V VDP NA when using Artesia altimeter setting. When local altimeter setting not received, use Artesia altimeter setting: increase DA to 3913 feet; increase all MDAs 80 feet and S-LOC 21 visibility Cat C/D 3/4 SM and Circling visibility Cat D 1/4 SM. For inop ALS when using Artesia altimeter setting, increase ILS all Cats visibility to 3/4 SM and LOC Cats C/D to 1 3/4 SM.</p> <p>ASR</p>		

ATIS 128.45 306.2	ROSWELL APP CON* 119.6 239.0	ROSWELL TOWER* 118.5 (CTAF) 0 233.7	GND CON 121.9 348.6	CLNC DEL 132.875 282.25	UNICOM 122.95
-----------------------------	--	---	-------------------------------	-----------------------------------	-------------------------



ELEV 3671	D	TDZE 3633
-----------	----------	-----------



CATEGORY	A	B	C	D
S-ILS 21	3833-1/2 200 (200-1/2)			
S-LOC 21	4020-1/2	387 (400-1/2)	4020-5/8	387 (400-5/8)
CIRCLING	4140-1	469 (500-1)	4140-1 1/2	4300-2 629 (700-2)

ROSWELL, NEW MEXICO
Amdt 18D 19MAR26

33°18'N-104°32'W

ROSWELL AIR CENTER (ROW) ILS Z or LOC Z RWY 21

SW-1, 14 MAY 2026 to 11 JUN 2026

SW-1, 14 MAY 2026 to 11 JUN 2026