

WAAS CH <b>69302</b> <b>W21A</b>	APP CRS <b>215°</b>	Rwy Ldg TDZE Apt Elev	<b>13000</b> <b>3633</b> <b>3671</b>
--	------------------------	-----------------------------	--

# RNAV (GPS) RWY 21

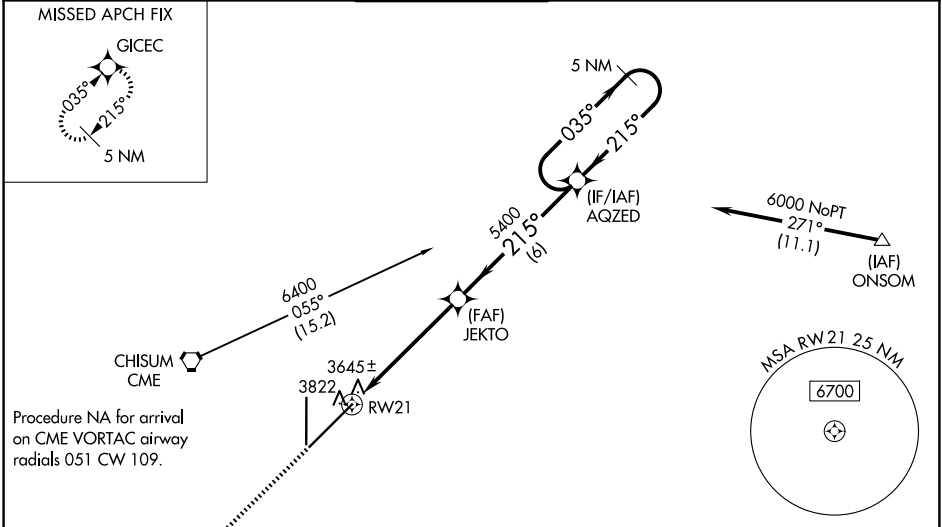
ROSWELL AIR CENTER (ROW)

RNP APCH-GPS.

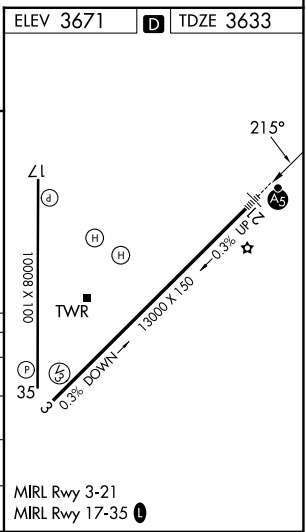
**ASR** For uncompensated Baro-VNAV systems, LNAV/VNAV NA below -22°C or above 41°C. When local altimeter setting not received, use Artesia altimeter setting: increase LPV DA to 3979 feet and all visibilities 1/8 SM; increase LNAV/VNAV DA to 4075 feet and all visibilities 1/4 SM; increase all MDAs 80 feet and LNAV Cat C/D visibility 1/8 SM and Circling Cat D visibility 1/4 SM. Baro-VNAV and VDP NA when using Artesia altimeter setting. For inop ALS, increase LPV all Cats visibility to 3/8 SM, and LNAV/VNAV all Cats visibility to 1 SM. For inop ALS when using Artesia altimeter setting, increase LPV all Cats visibility to 1 SM and LNAV/VNAV all Cats visibility to 1 1/8 SM.

**MALSRL** MISSED APPROACH: Climb to 6300 direct GICEC and hold.

ATIS <b>128.45 306.2</b>	ROSWELL APP CON * <b>119.6 239.0</b>	ROSWELL TOWER * <b>118.5(CTAF) 233.7</b>	GND CON <b>121.9 348.6</b>	CLNC DEL <b>132.875 282.25</b>	UNICOM <b>122.95</b>
-----------------------------	---	---	-------------------------------	-----------------------------------	-------------------------



ELEV 3671	TDZE 3633			
6300	GICEC			
JEKTO	AQZED			
5400	6000			
1.3 NM to RW21	5 NM Holding Pattern			
1.3 NM	4 NM	6 NM		
CATEGORY	A	B	C	D
LPV DA	3899-1/2		266 (300-1/2)	
LNAV/VNAV DA	3995-5/8		362 (400-3/8)	
LNAV MDA	4080-1/2 447 (500-1/2)		4080-7/8 447 (500-7/8)	
CIRCLING	4140-1 1/4 469 (500-1 1/4)		4140-1 1/2 469 (500-1 1/2) 4300-2 629 (700-2)	



SW-1, 14 MAY 2026 to 11 JUN 2026

SW-1, 14 MAY 2026 to 11 JUN 2026