

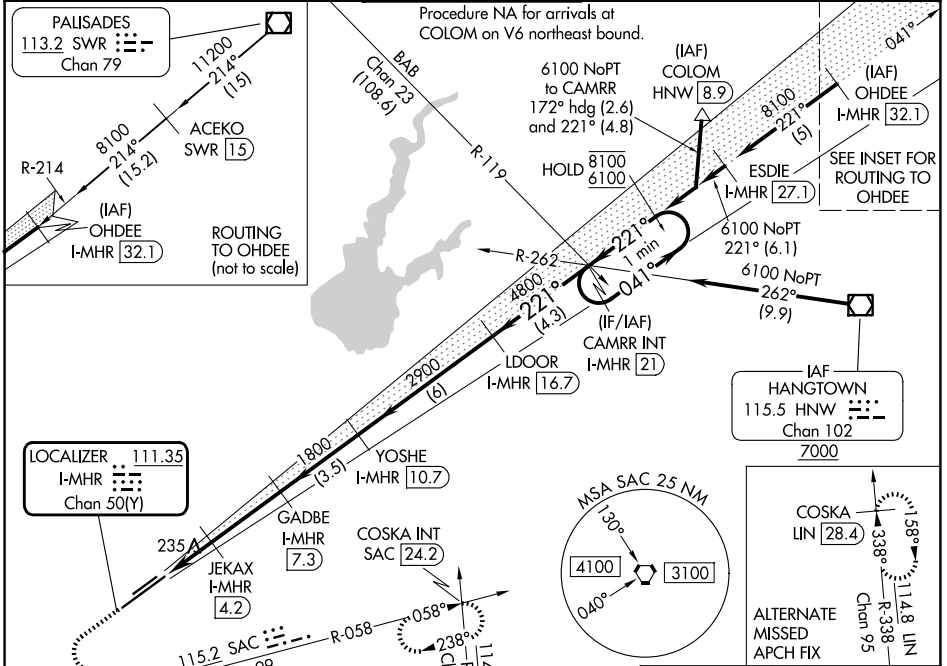
LOC/DME I-MHR 111.35 Chan 50(Y)	APP CRS 221°	Rwy Ldg 11301
		TDZE 98
		Apt Elev 98

ILS Z or LOC Z RWY 22L

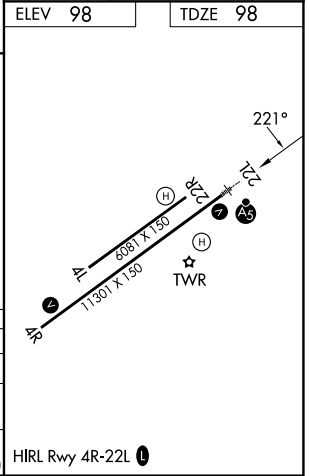
SACRAMENTO MATHER (MHR)

DME required for LOC only.	MALSR	MISSED APPROACH: Climb to 1000, then climbing left turn to 3500 on heading 090° and SAC VORTAC R-058 to COSKA INT/ SAC 24.2 DME and hold, continue climb-in-hold to 3500.
<p>▼ For inop ALS, increase S-ILS Cat E visibility to RVR 4000 and S-LOC Cat C/D/E visibility to RVR 6000. Circling NA northwest of Rwy 4R-22L.</p> <p>▲ *RVR 1800 authorized with use of FD or AP or HUD to DA (NA when using Sacramento Exec altimeter setting).</p>		

ATIS 118.325	NORCAL APP CON 127.4 317.5	MATHER TOWER ★ 120.65(CTAF) 282.25	GND CON 121.85 307.9	UNICOM 122.95
------------------------	--------------------------------------	--	--------------------------------	-------------------------



ELEV 98	TDZE 98
1000	3500
hdg 090°	SAC R-058
COSKA INT	VGSI and ILS glidepath not coincident (VGSI Angle 3.00/TCH 50).
One Minute Holding Pattern	
JEKAX I-MHR 4.2	GADBE I-MHR 7.3
YOSHE I-MHR 10.7	LDOOR I-MHR 16.7
CAMRR INT I-MHR 21	
800	1800
2900	4800
041°	8100
221°	6100
GS 3.00°	TCH 56
1.1 NM	1 NM
3.1 NM	3.5 NM
6 NM	4.3 NM
CATEGORY	A B C D E
S-ILS 22L*	298/24 200 (200-½)
S-LOC 22L	500/24 402 (500-½) 500/40 402 (500-¾)
CIRCLING	560-1 462 (500-1) 600-1½ 800-2¼ 800-2½ 502 (600-1½) 702 (800-2¼) 702 (800-2½)



SW-2, 14 MAY 2026 to 11 JUN 2026

SW-2, 14 MAY 2026 to 11 JUN 2026