

WAAS CH 42943 W 22B	APP CRS 221°	Rwy Ldg 6081 TDZE 94 Apt Elev 98
---	------------------------	---

RNAV (GPS) RWY 22R

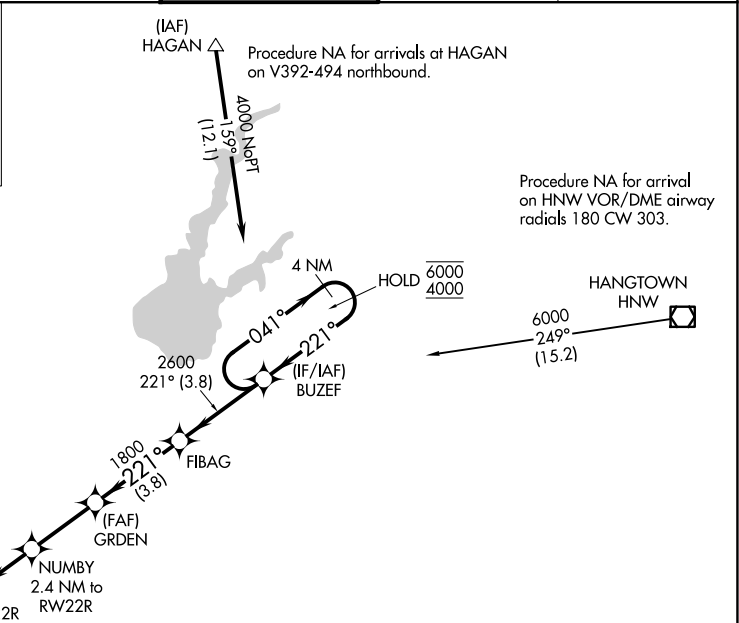
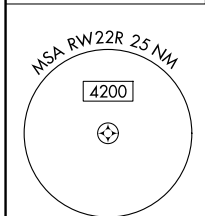
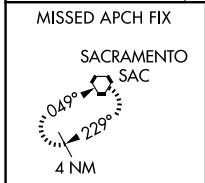
SACRAMENTO MATHER (MHR)

RNP APCH - GPS.

⚠ For uncompensated Baro-VNAV systems, LNAV/VNAV NA below -15°C or above 54°C. Circling NA northwest of Rwy 4L-22R. Procedure NA at night.

MISSED APPROACH: Climb to 500 then climb to 3000 direct SAC VORTAC and hold.

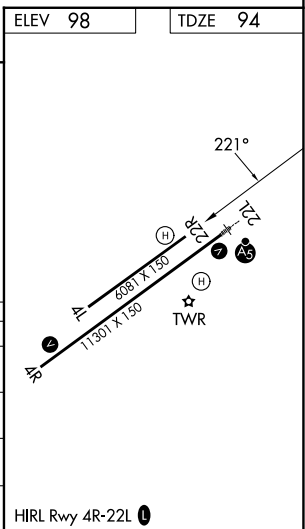
ATIS 118.325	NORCAL APP CON 127.4 317.5	MATHER TOWER ★ 120.65(CTAF) 282.25	GND CON 121.85 307.9	UNICOM 122.95
------------------------	--------------------------------------	--	--------------------------------	-------------------------



SW-2, 14 MAY 2026 to 11 JUN 2026

SW-2, 14 MAY 2026 to 11 JUN 2026

ELEV 98	TDZE 94			
500	3000	SAC		
NUMBY 2.4 NM to RW22R	GRDEN 1800	FIBAG	BUZEF	4 NM Holding Pattern
1.6 NM to RW22R	900	1800	041° → 6000	← 221° 4000
1.6 NM	0.8 NM	2.8 NM	3.8 NM	3.8 NM
CATEGORY	A	B	C	D
LPV DA	294-1		200 (200-1)	
LNAV/VNAV DA	532-1¼		438 (500-1¼)	
LNAV MDA	640-1	546 (600-1)	640-1⅝	546 (600-1⅝)
CIRCLING	640-1	542 (600-1)	640-1⅝	800-2¼ 542 (600-1⅝) 702 (800-2¼)



HIRL Rwy 4R-22L