

LOC I-MCC 109.7	APP CRS 163°	Rwy Ldg TDZE Apt Elev	10599 77 77
---------------------------	------------------------	-----------------------------	--

ILS or LOC RWY 16

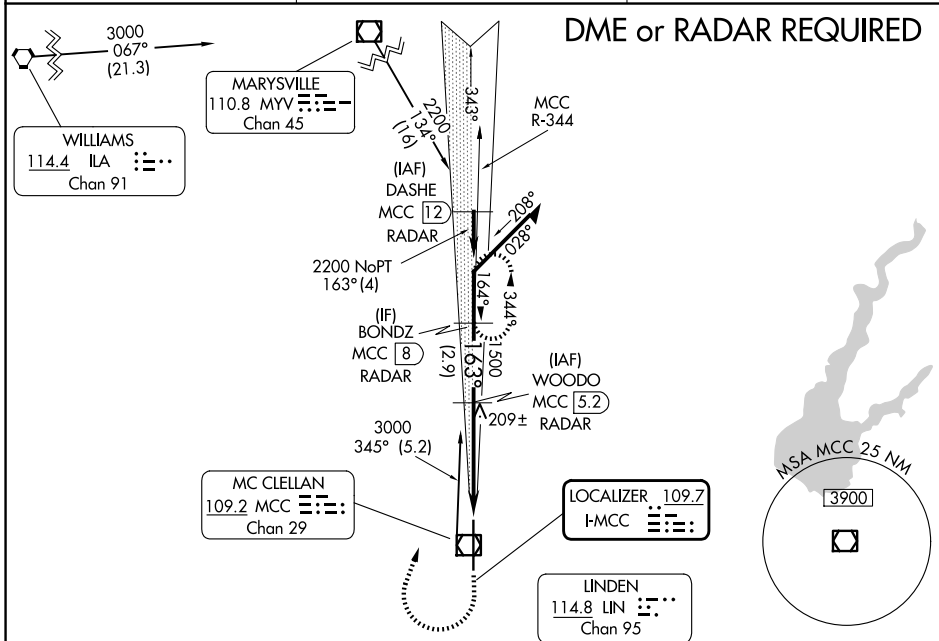
MC CLELLAN AIRFIELD (MCC)

NA DME from MCC VOR/DME. If local altimeter setting is not received, use Sacramento Intl altimeter setting and increase all DH/MDAs 40 feet.

MALS

MISSED APPROACH: Climb to 1200 then climbing right turn to 2200 via MCC VOR/DME R-344 to BONDZ/MCC 8 DME/RADAR and hold.

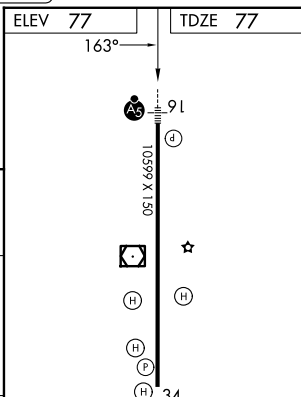
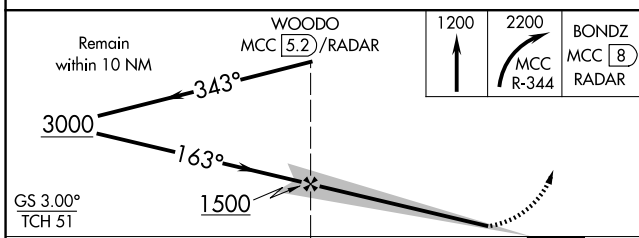
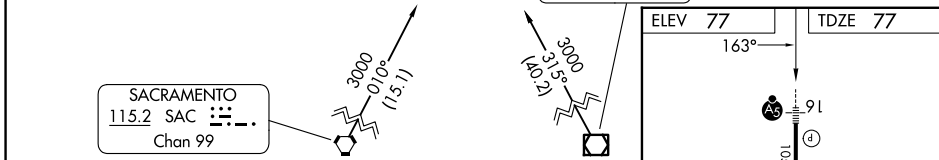
AWOS-3 125.975	NORCAL APP CON 127.4 317.5	UNICOM 122.975 (CTAF)
--------------------------	--------------------------------------	---------------------------------



DME or RADAR REQUIRED

SW-2, 14 MAY 2026 to 11 JUN 2026

SW-2, 14 MAY 2026 to 11 JUN 2026



CATEGORY	A	B	C	D
S-ILS 16		277-½	200 (200-½)	
S-LOC 16		460-½	383 (400-½)	460-¾ 383 (400-¾)
CIRCLING	NA			

HIRL Rwy 16-34

FAF to MAP 4.3 NM

Knots	60	90	120	150	180
Min:Sec	4:18	2:52	2:09	1:43	1:26